



## SKID PLATE FOR BETA

0026455



0026455.110



0026455.090

## FEATURES

Latest generation skid plate made of high-strength plastic with integrated fin

Fin designed to protect the shock absorber linkage from impacts, mud and sand allows you to slide easily over natural obstacles (whoops, stones, logs) ensuring a smooth ride

The design ensures maximum adherence to the link

6 mm thickness for maximum protection of the frame and engine

Extended protection areas on the side casings, on the valve adjustment cover and in the footrest frame area

Presence of unloading areas to give more lightness, ventilation and facilitate washing operations inside the skid plate

Design studied to reduce the entry of mud and debris into the engine

Compatible with simultaneous use of X-POWER

Using the two screws supplied and using the original bike attachments, it is possible to fasten and remove the skid plate quickly.

Weight: 885g

## PRODUCT DETAILS

96% Plastic | 4% Other

Made In: Italy

## APPLICATIONS

BETA RR 250 2T RACING 2024 2025 | BETA RR 300 2T RACING 2024 2025 | BETA RR X-PRO 300 2T 2025 | BETA RX 300 2025

## SKID PLATE FOR BETA 0025061



0025061.090



0025061.110

## FEATURES

### CONSTRUCTION AND DESIGN:

Latest generation sub-engine made of high-strength plastic with integrated fin

Fin designed to protect the shock absorber linkage from impacts, mud and sand allows you to slide easily over natural obstacles (whoops, stones, logs) ensuring a smooth ride

The design ensures maximum adherence to the link

6 mm thickness for maximum protection of the frame and engine

Extended protection areas on the side casings, on the valve adjustment cover and in the footrest frame area

Presence of unloading areas to give more lightness, ventilation and facilitate washing operations inside the sub-engine

Design studied to reduce the entry of mud and debris into the engine

Compatible with simultaneous use of X-POWER

Using the two screws supplied and using the original bike attachments, it is possible to fasten and remove the sub-engine quickly.

## PRODUCT DETAILS

NYLON 96% | Others 4%

Made In: Italy

## APPLICATIONS

BETA RR 250 2T 2020 2021 2022 2023 2024 | BETA RR 250 2T RACING 2020 2021 2022 2023 | BETA RR 300 2T 2020 2021 2022 2023 2024 | BETA RR 300 2T RACING 2020 2021 2022 2023



UNIVERSAL SKID  
PLATE LINK GUARD  
0023828



0023828.010



0023828.040



0023828.060



0023828.090



0023828.110



0023828.130

## FEATURES

Universal link guard suitable for every Acerbis Skidplate and most of the OEM ones  
Printed fin designed to protect the suspension link from impacts, mud and sand  
It allows the bike to easily slide over natural obstacles (whoops, rocks, trunks)

Its design ensures the best cover around the link, thus guaranteeing a clean ride  
Clamping screws included

**SKID PLATE FOR BETA**  
**0023920**



0023920.090



0023920.110

**FEATURES**

Latest generation skid plate that allows it to glide smoothly over natural obstacles (whoops, rocks, logs) ensuring a smooth ride. Offers maximum protection to the frame and engine. Extended protection areas on the side crankcases, water pump and footpeg area frame areas. Presence of exhaust areas to give more lightness, aeration and facilitate washing operations inside the under-engine.

Designed to reduce the entry of mud and debris. Compatible with simultaneous use of acerbis x-power (ignition and clutch housing protection). Mounts easily through the original holes on the frame. Mounting kit included.

**APPLICATIONS**

BETA RR 250 2T 2018 2019 | BETA RR 300 2T 2018 2019

---

**SKID PLATE FOR BETA**  
0022892



0022892.090



0022892.110

---

**APPLICATIONS**

BETA RR 250 2T 2018 2019 | BETA RR 300 2T 2018 2019



## SKID PLATE FOR HONDA TRANSALP 0026174



### FEATURES

Latest-generation skid plate that allows it to slide smoothly over natural obstacles (whoops, stones, logs) ensuring a smooth ride. It offers maximum protection for the chassis and engine. Extended protection areas on the side crankcases, water pump and footpeg areas of the frame. Presence of exhaust areas to give more lightness, ventilation and facilitate washing operations inside the under-engine

Design to reduce mud and debris ingress  
Compatible with simultaneous use of Acerbis x-power (ignition and clutch cover protection)  
Mounting kit included  
Weight: 2060g  
Not compatible with main stand

### PRODUCT DETAILS

82% Plastic | 14% Steel | 4% Others

Made In: Italy

### APPLICATIONS

HONDA TRANSALP XL750 2023 2024

### PRODUCTS RELATED



0026077  
FUEL TANK FOR HONDA  
TRANSALP 23L

■ 090.700



0025929  
ENDURANCE-X TRANSALP  
HANDGUARDS

■ 090



0026101  
X-GRIP FRAME PROTECTOR  
FOR HONDA TRANSALP

■ 090

■ 319

# SKID PLATES / HONDA

## SKID PLATE FOR HONDA TRANSALP

**ACERBI**



0026098  
X-POWER FOR HONDA  
TRANSALP

■ 090



0025964  
FORK SHOE COVER FOR  
HONDA TRANSALP

■ 090



0022397  
X-FACTORY HANDGUARDS

- |       |       |
|-------|-------|
| ■ 090 | ■ 203 |
| ■ 209 | ■ 229 |
| ■ 231 | ■ 232 |
| ■ 237 | ■ 239 |
| ■ 245 | ■ 251 |
| ■ 279 | ■ 313 |
| ■ 315 | ■ 321 |
| ■ 323 | ■ 325 |
| ■ 335 | ■ 343 |
| ■ 349 | ■ 377 |

SKID PLATE FOR  
HONDA  
0025034



0025034.090



0025034.110

## FEATURES

### CONSTRUCTION AND DESIGN:

Latest generation sub-engine made of high-strength plastic with integrated fin  
Fin designed to protect the shock absorber linkage from impacts, mud and sand allows you to slide easily over natural obstacles (whoops, stones, logs) ensuring a smooth ride  
The design ensures maximum adherence to the link  
6 mm thickness for maximum protection of the frame and engine  
Extended protection areas on the side casings

Presence of unloading areas to give more lightness, ventilation and facilitate washing operations inside the sub-engine  
Design studied to reduce the entry of mud and debris into the engine  
Compatible with simultaneous use of X-POWER  
Using the two screws supplied and using the original bike attachments, it is possible to fasten and remove the sub-engine quickly.

## PRODUCT DETAILS

POLYPROPYLENE 75% | RUBBER 21% | OTHERS 4%

Made In: Italy

## APPLICATIONS

HONDA CRF 250 R 2022 2023 2024 2025 | HONDA CRF 250 R-WE 2025 | HONDA CRF 250 RX 2022 2023 2024 2025 | HONDA CRF 250 RX ENDURO 2022 2023 2024 2025 | HONDA CRF 250 RX ENDURO SPECIAL 2022 2023 2024 2025 | HONDA CRF 300 RX 2022 2023 2024 | HONDA CRF 300 RX ENDURO 2025 | HONDA CRF 300 RX ENDURO SPECIAL 2022 2023 2024 2025



SKID PLATE FOR  
HONDA  
0024816



0024816.110



0024816.090

FEATURES

CONSTRUCTION AND DESIGN:

Design studied for optimal protection of the frame and engine.  
The impact resistant material effectively protects against stones, earth and mud.  
Flexible, lightweight plastic reduces vibration and surface damage to the frame and engine.

The air intakes are designed to ensure excellent ventilation of the engine, while reducing the entry of gravel, earth and mud.  
Intuitive and quick assembly / disassembly for normal engine maintenance and washing operations.

APPLICATIONS

HONDA CRF 250 L (JAPAN) 2021 2022 2023 2024 | HONDA CRF 300 L 2021 2022 2023 2024

SKID PLATE FOR  
HONDA  
0024705



0024705.090



0024705.110

## FEATURES

Last generation skid plate with built-in fin  
Printed fin designed to protect the suspension link from impacts, mud and sand. It allows the bike to easily slide over natural obstacles (whoops, rocks, trunks) Its design ensures the best cover around the link, thus guaranteeing a clean ride  
Plastic 6mm thick for the best frame and engine protection  
Protection areas extended over the engine covers, on the water pump and on the foot peg mounts

Discharge areas to improve lightness and airflow and to ease the cleaning process behind the skid plate  
Design developed to reduce the presence of mud and debris around the engine  
Possibility to combine its use with X-POWER (clutch and ignition cover protection)  
Carbon look refinishing  
Easy mounting on the original fastenings of the bike

## PRODUCT DETAILS

Polypropylene 75% | Rubber 20% | Others 5%

Made In: Italy

## APPLICATIONS

HONDA CRF 450 R 2021 2022 2023 2024 2025 | HONDA CRF 450 R-WE 2025 | HONDA CRF 450 RX 2021 2022 2023 2024 2025

**SKID PLATE FOR  
HONDA**  
0023290



0023290.090

**FEATURES**

Enduro Style

**APPLICATIONS**

HONDA CRF 250 R 2018 2019 2020 2021 | HONDA CRF 250 RX 2019 2020 2021 | HONDA CRF 300 RX 2019 2020 2021 | HONDA CRF 450 R 2017 2018 2019 2020 | HONDA CRF 450 RX 2017 2018 2019 2020

---

**SKID PLATE FOR  
HONDA**  
0022822



0022822.090

---

**APPLICATIONS**

HONDA CRF 250 L-M 2013 2014 2015 2016 2017 2018 2019 2020

**SKID PLATE FOR  
HONDA**  
0022656



0022656.090



0022656.110

**FEATURES**

Mx style

**APPLICATIONS**

HONDA CRF 450 R 2017 2018 2019 2020 | HONDA CRF 450 RX 2017 2018 2019 2020

**SKID PLATE FOR  
HONDA**  
0022388



0022388.090



0022388.110

**FEATURES**

Enduro style

**APPLICATIONS**

HONDA CRF 450 R 2017 2018 2019 2020 | HONDA CRF 450 RX 2017 2018 2019 2020

**SKID PLATE FOR  
HONDA**  
0013540



0013540.090

**APPLICATIONS**

HONDA CRF 250 R 2010 2011 2012 2013 2014 2015 2016 2017 | HONDA CRF 450 R 2009 2010 2011 2012 2013 2014 2015 2016



**SKID PLATE FOR  
HONDA**  
0013922



0013922.090

## APPLICATIONS

HONDA CRF 250 R 2010 2011 2012 2013 2014 2015 2016 2017 | HONDA CRF 450 R 2009 2010 2011 2012 2013 2014 2015 2016



**SKID PLATE FOR  
HONDA**  
**0011685**



0011685.020

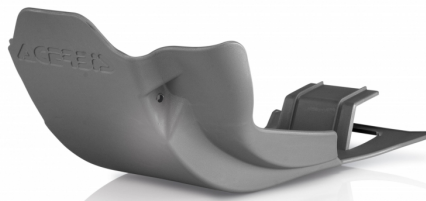


0011685.090

**APPLICATIONS**

HONDA CRF 250 R 2004 2005 2006 2007 2008 2009 | HONDA CRF 250 X 2004 2005 2006 2007 2008 2009 2010 2011 2012 2013 2014 2015 2016 2017

**SKID PLATE FOR  
HONDA**  
0011684



0011684.020



0011684.090

**APPLICATIONS**

HONDA CRF 450 R 2005 2006 2007 2008 | HONDA CRF 450 X 2005 2006 2007 2008 2009 2010 2011 2012 2013 2014 2015 2016



SKID PLATE FOR  
KTM/HUSQVARNA/GAS  
GAS  
0026822



0026822.040



0026822.011.016



0026822.090

## FEATURES

Latest-generation skid plate with integrated fin  
Co-moulded fin designed to protect the shock absorber linkage from impacts, mud and sand. It allows easy sliding over natural obstacles (whoops, stones, logs) ensuring a smooth ride. Design ensures maximum linkage grip  
6mm thickness for maximum chassis and engine protection  
Extended protection areas on the side casings, water pump and footpeg areas of the chassis  
Presence of exhaust areas to give more lightness, ventilation and facilitate washing inside the skid plate

Design to reduce mud and debris ingress  
Compatible with simultaneous use of X-Power (ignition crankcase and clutch protection)  
Protection of the side crankcases, on the water pump and in the frame areas around the footrests  
It is easily mounted by using the frame cross-member near the single shock absorber and by means of two supplied screws using the two original slots at the front  
Two-tone logo plate  
Weight: 700g

## PRODUCT DETAILS

98% Polypropylene | 2% Others

Made In: Italy

## APPLICATIONS

GAS GAS MC 85 2025 | HUSQVARNA TC 85 2025 | KTM SX 85 2025



**SKID PLATE FOR  
KTM/HUSQVARNA/GAS  
GAS  
0026600**



0026600.011.016



0026600.090

## FEATURES

Latest-generation skid plate with integrated fin  
Co-moulded fin designed to protect the shock absorber linkage from impacts, mud and sand. It allows easy sliding over natural obstacles (whoops, stones, logs) ensuring a smooth ride. Design ensures maximum linkage grip  
6mm thickness for maximum chassis and engine protection  
Extended protection areas on the side casings, water pump and footpeg areas of the chassis  
Presence of exhaust areas to give more lightness, ventilation and facilitate washing inside the skid plate

Design to reduce mud and debris ingress  
Compatible with simultaneous use of X-Power (ignition crankcase and clutch protection)  
Protection of the side crankcases, on the water pump and in the frame areas around the footrests  
It is easily mounted by using the frame cross-member near the single shock absorber and by means of two supplied screws using the two original slots at the front  
Two-tone logo plate  
Weight: 700g

## PRODUCT DETAILS

98% Polypropylene | 2% Others

Made In: Italy

## APPLICATIONS

GAS GAS MC 50 2024 2025 | HUSQVARNA TC 50 2024 2025 | KTM SX 50 2024 2025

SKID PLATE FOR  
KTM/HUSQVARNA/GAS  
GAS  
0025755



0025755.011.016



0025755.040



0025755.090

## FEATURES

Latest generation sub-engine with integrated fin  
Co-molded fin designed to protect the shock absorber linkage from impact, mud and sand. Allows easy sliding over natural obstacles (whoops, stones, logs) ensuring a smooth ride.  
Design ensures maximum grip on the link  
6mm thickness for maximum frame and engine protection  
Extended protection areas on the side crankcases, water pump, and in the areas of the frame footrest area  
Presence of drainage areas to impart more lightness, aeration, and facilitate washing operations inside the sub-engine

Design studied to reduce the ingress of mud and debris  
Compatible with simultaneous use of X-Power (Ignition and Clutch Crankcase Protection)  
Protection of the side crankcases, on the water pump and in the areas of the frame footrest area  
It is easily mounted by taking advantage of the frame sleeper near the mono-shock absorber and through two supplied screws that use the two original slots in the front  
Possibility of simultaneous use with x-power  
Two-tone nameplate with logo  
Weight: 700g

## PRODUCT DETAILS

98% Polypropylene | 2% Other

Made In: Italy

## APPLICATIONS

GAS GAS EC 250 2024 2025 | GAS GAS EC 300 2024 2025 | GAS GAS EX 250 2024 2025 | GAS GAS EX 300 2024 2025 | GAS GAS MC 250 2024 2025 | HUSQVARNA TC 250 2023 2024 2025 | HUSQVARNA TC 300 2025 | HUSQVARNA TE 250 2024 2025 | HUSQVARNA TE 300 2024 2025 | HUSQVARNA TE 300 PRO 2024 2025 | HUSQVARNA TX 300 2023 2024 2025 | KTM SX 150 2025 | KTM SX 250 2023 2024 2025 | KTM SX 300 2023 2024 2025 | KTM XC 250 2023 2024 2025 | KTM XC 300 2023 2024 2025

SKID PLATE FOR  
KTM/HUSQVARNA/GAS  
GAS  
0025336



0025336.011.016



0025336.040



0025336.090

## FEATURES

### CONSTRUCTION AND DESIGN:

Design designed for optimal protection of the chassis and motor.  
Fin designed to protect the shock absorber linkage from impacts, mud and sand. It allows you to easily slide over natural obstacles (Whoops, stones, logs) ensuring a smooth ride. The design ensures maximum adherence to the link  
Impact resistant material effectively protects against stones, earth and mud.  
Flexible and lightweight plastic reduces vibration and surface damage to chassis and engine  
The air intakes are designed to give more lightness, aeration and facilitate the washing operations inside the sub-engine, reducing the entrance of gravel, earth and mud.

Exploiting the original attacks of the bike the assembly/ disassembly is intuitive and to facilitate the normal maintenance and washing of the engine.

Extended protection areas on the side housings, on the water pump and in the chassis areas

Compatible with simultaneous use of X-Power (Ignition and clutch housing protection)

## PRODUCT DETAILS

Nyoln 96% | Others 4%

Made In: Italy

## APPLICATIONS

GAS GAS EC 250 F 2024 2025 | GAS GAS EC 350 F 2024 2025 | GAS GAS EX 250 F 2024 2025 | GAS GAS EX 350 F 2024 2025 | GAS GAS MC 250 F 2024 2025 | GAS GAS MC 350 F 2024 2025 | HUSQVARNA FC 250 2023 2024 2025 | HUSQVARNA FC 350 2023 2024 2025 | HUSQVARNA FE 250 2024 2025 | HUSQVARNA FE 350 2024 2025 | HUSQVARNA FE 350 PRO 2024 2025 | HUSQVARNA FE 350 S 2024 2025 | HUSQVARNA FE 350 W 2024 | HUSQVARNA FX 350 2023 2024 2025 | KTM SX-F 250 2023 2024 2025 | KTM SX-F 350 2023 2024 2025 | KTM XC-F 250 2023 2024 2025 | KTM XC-F 350 2023 2024 2025

**SKID PLATES / HUSQVARNA**  
**SKID PLATE FOR KTM/HUSQVARNA/GAS GAS**





SKID PLATE FOR  
KTM/HUSQVARNA/GAS  
GAS  
0025955



0025955.011.016



0025955.090

## FEATURES

Latest generation skid plate with integrated fin  
Fin designed to protect the linkage of the shock from impacts, mud and sand. It allows you to easily slide over natural obstacles (Whoops, stones, logs) ensuring a smooth ride. The design ensures maximum adherence to the link  
It offers maximum protection to the chassis and motor.  
Extended protection areas on the side housings, on the water pump and in the chassis areas  
Presence of exhaust areas to give more lightness, ventilation and facilitate the washing operations inside the skid plate

Design designed to reduce the ingress of mud and debris  
Protection of the side housings, on the water pump and in the areas of the chassis  
Easily mounts thanks the front holes and the original rear seats, with the addition of an additional support guaranteed by two plastic hooks  
Two-tone label with logo

## APPLICATIONS

GAS GAS ES 700 2022 2023 2024 | GAS GAS SM 700 2022 2023 2024 | HUSQVARNA 701 ENDURO 2016 2017 2018 2019 2020 2021 2022 2023 2024 | HUSQVARNA 701 SUPERMOTO 2016 2017 2018 2019 2020 2021 2022 2023 2024 | KTM 690 ENDURO R 2019 2020 2021 2022 2023 2024 | KTM 690 SMC R 2019 2020 2021 2022 2023 2024



SKID PLATE FOR  
KTM/HUSQVARNA/GAS  
GAS  
0025754



0025754.090



0025754.011.016



0025754.040

## FEATURES

Latest-generation skid plate with integrated fin  
Co-moulded fin designed to protect the shock absorber linkage from impacts, mud and sand. It allows easy sliding over natural obstacles (whoops, stones, logs) ensuring a smooth ride. Design ensures maximum linkage grip  
6mm thickness for maximum chassis and engine protection  
Extended protection areas on the side casings, water pump and footpeg areas of the chassis  
Presence of exhaust areas to give more lightness, ventilation and facilitate washing inside the skid plate

Design to reduce mud and debris ingress  
Compatible with simultaneous use of X-Power (ignition crankcase and clutch protection)  
Protection of the side crankcases, on the water pump and in the frame areas around the footrests  
It is easily mounted by using the frame cross-member near the single shock absorber and by means of two supplied screws using the two original slots at the front  
Two-tone logo plate  
Weight: 700g

## PRODUCT DETAILS

98% Polypropylene | 2% Others

Made In: Italy

## APPLICATIONS

GAS GAS EC 125 2025 | GAS GAS MC 125 2024 2025 | HUSQVARNA TC 125 2023 2024 2025 | HUSQVARNA TC 150 2025 | HUSQVARNA TE 125 2025 | HUSQVARNA TE 150 2024 2025 | KTM SX 125 2023 2024 2025 | KTM XC 125 2023 2024 2025

**SKID PLATE FOR  
HUSQVARNA**  
0024254



0024254.232



0024254.315

**APPLICATIONS**

HUSQVARNA FE 450 2020 2021 2022 2023 | HUSQVARNA FE 501 2020 2021 2022 2023 | HUSQVARNA FE 501 S 2022 2023

**SKID PLATE FOR  
HUSQVARNA/GAS GAS**  
0024023



0024023.315

**APPLICATIONS**

GAS GAS EC 250 F 2021 2022 2023 | GAS GAS EC 350 F 2021 2022 2023 | HUSQVARNA FE 250 2020 2021 2022 2023 | HUSQVARNA FE 350 2020 2021 2022 2023 | HUSQVARNA FE 350 S 2022 2023

**SKID PLATE FOR FOR  
KTM/HUSQVARNA/GAS  
GAS  
0024022**



0024022.315



0024022.237

**APPLICATIONS**

GAS GAS EC 250 2021 2022 2023 | GAS GAS EC 300 2021 2022 2023 | HUSQVARNA TE 250I 2020 2021 2022 2023 | HUSQVARNA TE 300I 2020 2021 2022 2023 | KTM XC-W 150 TPI 2020 2021 2022 2023

**SKID PLATE FOR  
KTM/HUSQVARNA/GAS  
GAS  
0023601**



0023601.203



0023601.232



0023601.313



0023601.315

**APPLICATIONS**

GAS GAS EX 450 F 2021 2022 2023 | GAS GAS MC 450 F 2021 2022 2023 | HUSQVARNA FC 450 2019 2020 2021 2022 | HUSQVARNA FX 450 2020 2021 2022 | KTM SX-F 450 2019 2020 2021 2022 | KTM XC-F 450 2019 2020 2021 2022

SKID PLATE FOR  
KTM/HUSQVARNA/GAS  
GAS  
0023660



0023660.209



0023660.237



0023660.313



0023660.315

## FEATURES

Last generation skid plate with built-in fin  
Printed fin designed to protect the suspension link from impacts, mud and sand. It allows the bike to easily slide over natural obstacles (whoops, rocks, trunks) Its design ensures the best cover around the link, thus guaranteeing a clean ride  
Plastic 6mm thick for the best frame and engine protection  
Protection areas extended over the engine covers, on the water pump and on the foot peg mounts

Discharge areas to improve lightness and airflow and to ease the cleaning process behind the skid plate  
Design developed to reduce the presence of mud and debris around the engine  
Possibility to combine its use with X-POWER (clutch and ignition cover protection)  
Carbon look refinishing  
Easy mounting on the original fastenings of the bike

## PRODUCT DETAILS

Skid plate realised in two joined sections: | Highly impact-resistant plastic skid plate | Fin for suspension link protection: blend rubber + plastic which allows resistance to impacts and better elasticity

Made In: Italy

## APPLICATIONS

GAS GAS EX 250 2022 2023 | GAS GAS EX 300 2021 2022 2023 | GAS GAS MC 250 2022 2023 | HUSQVARNA TC 250 2019 2020 2021 2022 | HUSQVARNA TX 300 2020 2021 2022 | KTM SX 250 2019 2020 2021 2022 | KTM XC 250 2019 2023 2024 | KTM XC 250 TPI 2020 2021 2022 | KTM XC 300 2019 | KTM XC 300 TPI 2020 2021 2022

**SKID PLATE FOR  
KTM/HUSQVARNA/GAS  
GAS  
0022895**



0022895.011



0022895.030



0022895.090

**APPLICATIONS**

GAS GAS MC 85 2021 2022 2023 2024 | HUSQVARNA TC 85 2018 2019 2020 2021 2022 2023 2024 | KTM SX 85 2018 2019 2020 2021 2022 2023 2024

**SKID PLATE FOR  
KTM/HUSQVARNA**  
0022823



0022823.090



0022823.030

**APPLICATIONS**

HUSQVARNA FE 250 2017 2018 2019 | HUSQVARNA FE 350 2017 2018 2019 | KTM EXC-F 250 2017 2018 2019 | KTM EXC-F 350 2017 2018 2019



**SKID PLATE FOR  
KTM/HUSQVARNA  
0022332**



0022332.090

---

**APPLICATIONS**

HUSQVARNA TC 250 2017 2018 | KTM SX 250 2017 2018

**SKID PLATE FOR  
KTM/HUSQVARNA**  
**0022320**



0022320.030



0022320.090

---

**APPLICATIONS**

HUSQVARNA TC 85 2014 2015 2016 2017 | KTM SX 85 2013 2014 2015 2016 2017

**SKID PLATE FOR  
KTM/HUSQVARNA/GAS  
GAS  
0022319**



0022319.090

**APPLICATIONS**

GAS GAS MC 125 2021 2022 2023 | HUSQVARNA TC 125 2016 2017 2018 2019 2020 2021 2022 | HUSQVARNA TE 150I 2020 2021 2022 2023 | HUSQVARNA TX 125 2017 2018 2019 | KTM EXC 150 TPI 2020 2021 2022 2023 | KTM SX 125 2016 2017 2018 2019 2020 2021 2022 | KTM SX 150 2016 2017 2018 2019 2020 | KTM XC 125 2020 2021 2022 | KTM XC-W 125 2017 2018 2019 | KTM XC-W 150 TPI 2019 2020 2021 2022 2023

**SKID PLATE FOR  
KTM/HUSQVARNA  
0022318**



0022318.011



0022318.030



0022318.090

**APPLICATIONS**

HUSQVARNA TE 250 2017 | HUSQVARNA TE 250I 2018 2019 | HUSQVARNA TE 300 2017 | HUSQVARNA TE 300I 2018 2019 | KTM EXC 250 2017  
| KTM EXC 250 TPI 2018 2019 | KTM EXC 300 2017 | KTM EXC 300 TPI 2018 2019 | KTM XC-W 250 TPI 2019 | KTM XC-W 300 TPI 2019

**SKID PLATE FOR  
KTM/HUSQVARNA  
0021755**



0021755.011



0021755.090



0021755.091



0021755.232

**APPLICATIONS**

HUSQVARNA FC 450 2016 2017 2018 | HUSQVARNA FE 450 2017 2018 2019 | HUSQVARNA FE 501 2017 2018 2019 | KTM SX-F 450 2016 2017 2018

**SKID PLATE FOR  
KTM/HUSQVARNA  
0021727**



0021727.011



0021727.030



0021727.090

**APPLICATIONS**

HUSQVARNA FC 250 2016 2017 2018 | HUSQVARNA FC 350 2016 2017 2018 | KTM SX-F 250 2016 2017 2018 | KTM SX-F 350 2016 2017 2018

**SKID PLATE FOR  
KTM/HUSQVARNA**  
0016312



0016312.010

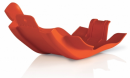
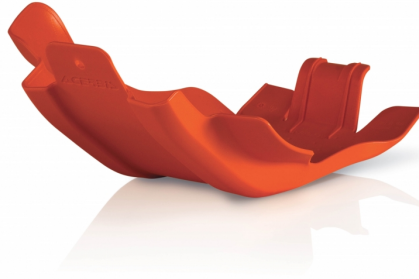


0016312.090

**APPLICATIONS**

HUSQVARNA FC 450 2014 2015 | HUSQVARNA FE 450 2014 2015 2016 | HUSQVARNA FE 501 2014 2015 2016 | KTM EXC-F 450 2012 2013 2014 2015 2016 | KTM EXC-F 500 2012 2013 2014 2015 2016 | KTM SX-F 450 2013 2014 2015

**SKID PLATE FOR  
KTM/HUSQVARNA**  
**0016310**



0016310.010



0016310.090

---

**APPLICATIONS**

HUSQVARNA FE 250 2014 2015 2016 | HUSQVARNA FE 350 2014 2015 2016 | KTM EXC-F 250 2014 2015 2016 | KTM EXC-F 350 2012 2013 2014 2015 2016



**SKID PLATE FOR  
KTM/HUSQVARNA**  
**0015950**



0015950.090

---

**APPLICATIONS**

HUSQVARNA TC 125 2014 2015 | HUSQVARNA TE 125 2014 2015 2016 | KTM EXC 125 2012 2013 2014 2015 2016 | KTM EXC 200 2012 2013 2014 2015 2016 | KTM SX 125 2011 2012 2013 2014 2015 | KTM SX 150 2011 2012 2013 2014 2015

**SKID PLATE FOR  
KTM/HUSQVARNA**  
**0015936**



0015936.090

---

## **APPLICATIONS**

HUSQVARNA FC 250 2014 2015 | HUSQVARNA FC 350 2014 2015 | KTM SX-F 250 2013 2014 2015 | KTM SX-F 350 2011 2012 2013 2014 2015

**SKID PLATE FOR  
KTM/HUSQVARNA  
0013683**



0013683.010



0013683.090

**APPLICATIONS**

HUSQVARNA TC 250 2014 2015 2016 | HUSQVARNA TE 250 2014 2015 2016 | HUSQVARNA TE 300 2014 2015 2016 | KTM EXC 250 2006 2007 2008 2009 2010 2011 2012 2013 2014 2015 2016 | KTM EXC 300 2006 2007 2008 2009 2010 2011 2012 2013 2014 2015 2016 | KTM SX 250 2006 2007 2008 2009 2010 2011 2012 2013 2014 2015 2016



SKID PLATE FOR  
KAWASAKI  
0026097



0026097.130



0026097.090

## FEATURES

Latest generation skid plate that allows it to glide smoothly over natural obstacles (whoops, rocks, logs) ensuring a smooth ride. Offers maximum protection to the frame and engine. Extended protection areas on the side crankcases, water pump and footpeg area frame areas. Presence of exhaust areas to give more lightness, aeration and facilitate washing operations inside the under-engine.

Design designed to reduce the entry of mud and debris. Protection of the side crankcases, on the water pump and in the areas of the frame footrest area. Easily mounts through the original holes in the frame. Mounting kit included.

## PRODUCT DETAILS

96% Plastic | 4% Other

Made In: Italy

## APPLICATIONS

KAWASAKI KX 450 2024 2025 | KAWASAKI KX 450 X 2024 2025

SKID PLATE FOR  
KAWASAKI  
0023701



0023701.315



0023701.325

APPLICATIONS

KAWASAKI KX 250 2021 2022 2023 2024 | KAWASAKI KX 250 X 2021 2022 2023 2024 | KAWASAKI KX 300 X ENDURO 2024 | KAWASAKI KX 450 2020 2021 2022 2023 | KAWASAKI KX 450 F 2019 | KAWASAKI KX 450 X 2021 2022 2023

PRODUCTS RELATED



0023649  
FULL PLASTIC KIT FOR  
KAWASAKI

- |                                  |                                  |
|----------------------------------|----------------------------------|
| <input type="checkbox"/> 030     | <input type="checkbox"/> 070     |
| <input type="checkbox"/> 072     | <input type="checkbox"/> 083     |
| <input type="checkbox"/> 090     | <input type="checkbox"/> 092     |
| <input type="checkbox"/> 130     | <input type="checkbox"/> 132     |
| <input type="checkbox"/> 325     | <input type="checkbox"/> 553     |
| <input type="checkbox"/> 553.020 | <input type="checkbox"/> 553.024 |

**SKID PLATE FOR  
KAWASAKI**  
0022502



0022502.020



0022502.090

**APPLICATIONS**

KAWASAKI KX 250 2020 | KAWASAKI KX 250 F 2017 2018 2019

**SKID PLATE FOR  
KAWASAKI**  
0021932



0021932.020



0021932.090

**APPLICATIONS**

KAWASAKI KX 450 F 2016 2017 2018

**SKID PLATE FOR  
KAWASAKI**  
0013821



0013821.090

---

**APPLICATIONS**

KAWASAKI KX 250 2020 | KAWASAKI KX 250 F 2009 2010 2011 2012 2013 2014 2015 2016 2017 2018 2019



**SKID PLATE FOR  
KAWASAKI**  
**0013539**



0013539.090

---

**APPLICATIONS**

KAWASAKI KX 450 F 2009 2010 2011 2012 2013 2014 2015

**SKID PLATE FOR  
KAWASAKI**  
**0013519**



0013519.090

---

**APPLICATIONS**

KAWASAKI KX 250 F 2009 2010 2011 2012 2013 2014 2015 2016

**SKID PLATE FOR  
KAWASAKI/YAMAHA**  
0011678



0011678.090

**APPLICATIONS**

KAWASAKI KLX 450 2008 2009 2010 2011 2012 2013 2014 2015 2016 2017 2018 | YAMAHA WR 250 F 2007 2008 2009 2010 2011 2012 2013 2014 2015 2016 2017 2018 2019 | YAMAHA WR 450 F 2007 2008 2009 2010 2011 2012 2013 2014 2015 2016 2017 2018



SKID PLATE FOR  
SUZUKI  
0026024



0026024.090

## FEATURES

Skid plate with integrated fin  
Fin designed to protect the shock linkage from impacts, mud and sand. it allows it to glide smoothly over natural obstacles (whoops, rocks, logs) ensuring a smooth ride. the design ensures maximum linkage grip  
Offers maximum protection to the chassis and engine.  
Extended protection areas on the side crankcases, water pump and footpeg area frame areas

Presence of exhaust areas to give more lightness, aeration and facilitate washing operations inside the under-engine  
Design designed to reduce the entry of mud and debris  
Compatible with simultaneous use of acerbis x-power (ignition and clutch crankcase protection)  
Weight 1000g

## PRODUCT DETAILS

98% Plastic | 2% Others

Made In: Italy

## APPLICATIONS

SUZUKI DRZ 400 2000 2001 2002 2003 2004 2005 2006 2007 2008 2009 2010 2011 2012 2013 2014 2016 2017 2018 2019 2020 2021 2022 2023 | SUZUKI DRZ 400 SM 2000 2001 2002 2003 2004 2005 2006 2007 2008 2009 2010 2011 2012 2013 2014 2016 2017 2018 2019 2020 2021 2022 2023 | SUZUKI DRZ 400E 2000 2001 2002 2003 2004 2005 2006 2007 2008 2009 2010 2011 2012 2013 2014 2016 2017 2018 2019 2020 2021 2022 2023 | SUZUKI DRZ 400S 2000 2001 2002 2003 2004 2005 2006 2007 2008 2009 2010 2011 2012 2013 2014 2016 2017 2018 2019 2020 2021 2022 2023

**SKID PLATE FOR  
SUZUKI**  
0023735



0023735.315



0023735.318

**APPLICATIONS**

SUZUKI RM-Z 250 2019 2020 2021 2022 2023 2024 2025

**SKID PLATE FOR  
SUZUKI**  
0023069



0023069.090

---

**APPLICATIONS**

SUZUKI RM-Z 450 2018 2019 2020 2021 2022 2023 2024 2025

SKID PLATE FOR  
SUZUKI  
0021527



0021527.090

APPLICATIONS

SUZUKI DR 650 1996 1997 1998 1999 2000 2001 2002 2003 2004 2005 2006 2007 2008 2009 2010 2011 2012 2013 2014 2015 2016 2017 2018 2019 2020 2021 2022 2023

PRODUCTS RELATED



0016302  
FUEL TANK FOR SUZUKI 20L

- 030.700  040.700
- 070.700  090.700
- 120.700

**SKID PLATE FOR  
SUZUKI**  
0015909



0015909.090

---

## **APPLICATIONS**

SUZUKI RM-Z 250 2010 2011 2012 2013 2014 2015 2016 2017 2018





**SKID PLATE FOR  
SUZUKI**  
**0015908**



0015908.090

---

**APPLICATIONS**

SUZUKI RM-Z 450 2008 2009 2010 2011 2012 2013 2014 2015 2016 2017



SKID PLATE FOR  
KTM/HUSQVARNA/GAS  
GAS  
0026822



0026822.040



0026822.011.016



0026822.090

## FEATURES

Latest-generation skid plate with integrated fin  
Co-moulded fin designed to protect the shock absorber linkage from impacts, mud and sand. It allows easy sliding over natural obstacles (whoops, stones, logs) ensuring a smooth ride. Design ensures maximum linkage grip  
6mm thickness for maximum chassis and engine protection  
Extended protection areas on the side casings, water pump and footpeg areas of the chassis  
Presence of exhaust areas to give more lightness, ventilation and facilitate washing inside the skid plate

Design to reduce mud and debris ingress  
Compatible with simultaneous use of X-Power (ignition crankcase and clutch protection)  
Protection of the side crankcases, on the water pump and in the frame areas around the footrests  
It is easily mounted by using the frame cross-member near the single shock absorber and by means of two supplied screws using the two original slots at the front  
Two-tone logo plate  
Weight: 700g

## PRODUCT DETAILS

98% Polypropylene | 2% Others

Made In: Italy

## APPLICATIONS

GAS GAS MC 85 2025 | HUSQVARNA TC 85 2025 | KTM SX 85 2025



**SKID PLATE FOR  
KTM/HUSQVARNA/GAS  
GAS  
0026600**



0026600.011.016



0026600.090

## FEATURES

Latest-generation skid plate with integrated fin  
Co-moulded fin designed to protect the shock absorber linkage from impacts, mud and sand. It allows easy sliding over natural obstacles (whoops, stones, logs) ensuring a smooth ride. Design ensures maximum linkage grip  
6mm thickness for maximum chassis and engine protection  
Extended protection areas on the side casings, water pump and footpeg areas of the chassis  
Presence of exhaust areas to give more lightness, ventilation and facilitate washing inside the skid plate

Design to reduce mud and debris ingress  
Compatible with simultaneous use of X-Power (ignition crankcase and clutch protection)  
Protection of the side crankcases, on the water pump and in the frame areas around the footrests  
It is easily mounted by using the frame cross-member near the single shock absorber and by means of two supplied screws using the two original slots at the front  
Two-tone logo plate  
Weight: 700g

## PRODUCT DETAILS

98% Polypropylene | 2% Others

Made In: Italy

## APPLICATIONS

GAS GAS MC 50 2024 2025 | HUSQVARNA TC 50 2024 2025 | KTM SX 50 2024 2025



**SKID PLATE FOR  
KTM-HUSQUARNA-GAS  
GAS 65  
0026453**



0026453.090



0026453.011.016

## FEATURES

Next-generation skid plate developed to provide maximum protection of the areas of greatest impact.  
Allows smooth sliding over obstacles found on motocross tracks (whoops, boulders) ensuring a smooth ride.  
Extended protection areas on the side crankcases, water pump and footpeg area

Presence of exhaust areas to give more lightness, aeration and facilitate washing operations inside the skid plate  
Designed to reduce the entry of mud and debris  
Weight: 400g

## PRODUCT DETAILS

78% Plastic | 20% Steel | 2% Other

Made In: Italy

## APPLICATIONS

GAS GAS MC 65 2024 2025 | HUSQVARNA TC 65 2024 2025 | KTM SX 65 2024 2025



**SKID PLATE FOR KTM**  
0025984



0025984.011.016



0025984.090

**APPLICATIONS**

KTM EXC-F 450 2024 | KTM EXC-F 500 2024 2025 | KTM XCF-W 450 2024 2025 | KTM XW-F 500 2024 2025



## SKID PLATE FOR KTM

0025983



0025983.011.016



0025983.090

## FEATURES

Skid plate of the latest generation that allows it to slide smoothly over natural obstacles (whoops, rocks, logs) ensuring a smooth ride. Provides maximum protection for the frame and engine. Extended protection areas on the side crankcases, water pump and footpeg area frame areas. Presence of exhaust areas to give more lightness, aeration and facilitate washing operations inside the under-engine.

Designed to reduce mud and debris ingress. Compatible with simultaneous use of Acerbis X-Power (Ignition and clutch crankcase protection). Easily mounted by taking advantage of the frame crossmember near the single shock and via 2 supplied screws using the two original slots in the front. Weight: 650g.

## APPLICATIONS

KTM EXC 250 2024 2025 | KTM EXC 300 2024 2025 | KTM XC-W 250 2024 2025 | KTM XC-W 300 2024 2025



**SKID PLATE FOR KTM**  
0025982



0025982.011.016



0025982.090

**APPLICATIONS**

KTM EXC 150 2024 | KTM XC-W 125 2025 | KTM XC-W 150 2024 2025

## SKID PLATE FOR KTM 0025971



0025971.011.016



0025971.090

## FEATURES

Skid plate of the latest generation that allows it to glide smoothly over natural obstacles (stones, logs) ensuring a smooth ride.  
Provides maximum protection to the frame and engine.  
Extensive protection areas on the side crankcases, water pump and footpeg area frame areas  
Presence of exhaust areas to give more lightness, aeration and facilitate washing operations inside the under-engine

Designed to reduce mud and debris ingress  
Compatible with simultaneous use of Acerbis X-Power (Ignition and clutch housing protection)  
Mounts easily by taking advantage of the four original holes on the frame  
Weight: 650g

## APPLICATIONS

KTM EXC-F 250 2024 2025 | KTM EXC-F 350 2024 2025 | KTM XW-F 350 2024 2025





**SKID PLATE FOR  
KTM/HUSQVARNA/GAS  
GAS**  
0025955



0025955.011.016



0025955.090

## FEATURES

Latest generation skid plate with integrated fin  
Fin designed to protect the linkage of the shock from impacts, mud and sand. It allows you to easily slide over natural obstacles (Whoops, stones, logs) ensuring a smooth ride. The design ensures maximum adherence to the link  
It offers maximum protection to the chassis and motor.  
Extended protection areas on the side housings, on the water pump and in the chassis areas  
Presence of exhaust areas to give more lightness, ventilation and facilitate the washing operations inside the skid plate

Design designed to reduce the ingress of mud and debris  
Protection of the side housings, on the water pump and in the areas of the chassis  
Easily mounts thanks the front holes and the original rear seats, with the addition of an additional support guaranteed by two plastic hooks  
Two-tone label with logo

## APPLICATIONS

GAS GAS ES 700 2022 2023 2024 | GAS GAS SM 700 2022 2023 2024 | HUSQVARNA 701 ENDURO 2016 2017 2018 2019 2020 2021 2022 2023 2024 | HUSQVARNA 701 SUPERMOTO 2016 2017 2018 2019 2020 2021 2022 2023 2024 | KTM 690 ENDURO R 2019 2020 2021 2022 2023 2024 | KTM 690 SMC R 2019 2020 2021 2022 2023 2024

SKID PLATE FOR  
KTM/HUSQVARNA/GAS  
GAS  
0025755



0025755.011.016



0025755.040



0025755.090

## FEATURES

Latest generation sub-engine with integrated fin  
Co-molded fin designed to protect the shock absorber linkage from impact, mud and sand. Allows easy sliding over natural obstacles (whoops, stones, logs) ensuring a smooth ride.  
Design ensures maximum grip on the link  
6mm thickness for maximum frame and engine protection  
Extended protection areas on the side crankcases, water pump, and in the areas of the frame footrest area  
Presence of drainage areas to impart more lightness, aeration, and facilitate washing operations inside the sub-engine

Design studied to reduce the ingress of mud and debris  
Compatible with simultaneous use of X-Power (Ignition and Clutch Crankcase Protection)  
Protection of the side crankcases, on the water pump and in the areas of the frame footrest area  
It is easily mounted by taking advantage of the frame sleeper near the mono-shock absorber and through two supplied screws that use the two original slots in the front  
Possibility of simultaneous use with x-power  
Two-tone nameplate with logo  
Weight: 700g

## PRODUCT DETAILS

98% Polypropylene | 2% Other

Made In: Italy

## APPLICATIONS

GAS GAS EC 250 2024 2025 | GAS GAS EC 300 2024 2025 | GAS GAS EX 250 2024 2025 | GAS GAS EX 300 2024 2025 | GAS GAS MC 250 2024 2025 | HUSQVARNA TC 250 2023 2024 2025 | HUSQVARNA TC 300 2025 | HUSQVARNA TE 250 2024 2025 | HUSQVARNA TE 300 2024 2025 | HUSQVARNA TE 300 PRO 2024 2025 | HUSQVARNA TX 300 2023 2024 2025 | KTM SX 150 2025 | KTM SX 250 2023 2024 2025 | KTM SX 300 2023 2024 2025 | KTM XC 250 2023 2024 2025 | KTM XC 300 2023 2024 2025

SKID PLATE FOR  
KTM/HUSQVARNA/GAS  
GAS  
0025754



0025754.090



0025754.011.016



0025754.040

## FEATURES

Latest-generation skid plate with integrated fin  
Co-moulded fin designed to protect the shock absorber linkage from impacts, mud and sand. It allows easy sliding over natural obstacles (whoops, stones, logs) ensuring a smooth ride. Design ensures maximum linkage grip  
6mm thickness for maximum chassis and engine protection  
Extended protection areas on the side casings, water pump and footpeg areas of the chassis  
Presence of exhaust areas to give more lightness, ventilation and facilitate washing inside the skid plate

Design to reduce mud and debris ingress  
Compatible with simultaneous use of X-Power (ignition crankcase and clutch protection)  
Protection of the side crankcases, on the water pump and in the frame areas around the footrests  
It is easily mounted by using the frame cross-member near the single shock absorber and by means of two supplied screws using the two original slots at the front  
Two-tone logo plate  
Weight: 700g

## PRODUCT DETAILS

98% Polypropylene | 2% Others

Made In: Italy

## APPLICATIONS

GAS GAS EC 125 2025 | GAS GAS MC 125 2024 2025 | HUSQVARNA TC 125 2023 2024 2025 | HUSQVARNA TC 150 2025 | HUSQVARNA TE 125 2025 | HUSQVARNA TE 150 2024 2025 | KTM SX 125 2023 2024 2025 | KTM XC 125 2023 2024 2025

SKID PLATE FOR  
KTM/HUSQVARNA/GAS  
GAS  
0025445



0025445.090



0025445.040



0025445.011.016

## FEATURES

Latest generation skid plate with integrated fin  
Fin designed to protect the shock absorber linkage from impacts, mud and sand. It allows easy sliding over natural obstacles (whoops, stones, logs) ensuring a smooth ride. Design ensures maximum linkage grip  
Offers maximum protection for the chassis and engine.  
Extended protection areas on the side casings, water pump and footpeg areas of the frame

Presence of exhaust areas to give more lightness, ventilation and facilitate washing inside the skid plate  
Design to reduce mud and debris ingress  
Compatible with simultaneous use of Acerbis X-Power (Ignition and clutch cover protection)  
Easily mounted using the four original holes in the frame  
Two-tone logo plate  
Weight: 700g

## PRODUCT DETAILS

98% Polypropylene | 2% Other

Made In: Italy

## APPLICATIONS

GAS GAS EC 450 F 2024 2025 | GAS GAS EC 500 F 2024 2025 | GAS GAS EX 450 F 2024 2025 | GAS GAS MC 450 F 2024 2025 | HUSQVARNA FC 450 2023 2024 2025 | HUSQVARNA FE 450 2024 2025 | HUSQVARNA FE 501 2024 2025 | HUSQVARNA FE 501 S 2024 2025 | HUSQVARNA FE 501 W 2024 | HUSQVARNA FX 450 2023 2024 2025 | KTM SX-F 450 2023 2024 2025 | KTM XC-F 450 2023 2024 2025

SKID PLATE FOR  
KTM/HUSQVARNA/GAS  
GAS  
0025336



0025336.011.016



0025336.040



0025336.090

## FEATURES

### CONSTRUCTION AND DESIGN:

Design designed for optimal protection of the chassis and motor.  
Fin designed to protect the shock absorber linkage from impacts, mud and sand. It allows you to easily slide over natural obstacles (Whoops, stones, logs) ensuring a smooth ride. The design ensures maximum adherence to the link  
Impact resistant material effectively protects against stones, earth and mud.  
Flexible and lightweight plastic reduces vibration and surface damage to chassis and engine  
The air intakes are designed to give more lightness, aeration and facilitate the washing operations inside the sub-engine, reducing the entrance of gravel, earth and mud.

Exploiting the original attacks of the bike the assembly/ disassembly is intuitive and to facilitate the normal maintenance and washing of the engine.

Extended protection areas on the side housings, on the water pump and in the chassis areas

Compatible with simultaneous use of X-Power (Ignition and clutch housing protection)

## PRODUCT DETAILS

Nyoln 96% | Others 4%

Made In: Italy

## APPLICATIONS

GAS GAS EC 250 F 2024 2025 | GAS GAS EC 350 F 2024 2025 | GAS GAS EX 250 F 2024 2025 | GAS GAS EX 350 F 2024 2025 | GAS GAS MC 250 F 2024 2025 | GAS GAS MC 350 F 2024 2025 | HUSQVARNA FC 250 2023 2024 2025 | HUSQVARNA FC 350 2023 2024 2025 | HUSQVARNA FE 250 2024 2025 | HUSQVARNA FE 350 2024 2025 | HUSQVARNA FE 350 PRO 2024 2025 | HUSQVARNA FE 350 S 2024 2025 | HUSQVARNA FE 350 W 2024 | HUSQVARNA FX 350 2023 2024 2025 | KTM SX-F 250 2023 2024 2025 | KTM SX-F 350 2023 2024 2025 | KTM XC-F 250 2023 2024 2025 | KTM XC-F 350 2023 2024 2025

**SKID PLATES / HUSQVARNA**  
**SKID PLATE FOR KTM/HUSQVARNA/GAS GAS**



## SKID PLATE FOR KTM 0024255



0024255.209



0024255.237



0024255.313



0024255.315

## FEATURES

Last generation skid plate with built-in fin  
Printed fin designed to protect the suspension link from impacts, mud and sand. It allows the bike to easily slide over natural obstacles (whoops, rocks, trunks) Its design ensures the best cover around the link, thus guaranteeing a clean ride  
Plastic 6mm thick for the best frame and engine protection  
Protection areas extended over the engine covers, on the water pump and on the foot peg mounts

Discharge areas to improve lightness and airflow and to ease the cleaning process behind the skid plate  
Design developed to reduce the presence of mud and debris around the engine  
Possibility to combine its use with X-POWER (clutch and ignition cover protection)  
Carbon look refinishing  
Easy mounting on the original fastenings of the bike

## PRODUCT DETAILS

Skid plate realised in two joined sections: | Highly impact-resistant plastic skid plate | Fin for suspension link protection: blend rubber + plastic which allows resistance to impacts and better elasticity

Made In: Italy

## APPLICATIONS

HUSQVARNA FC 250 2019 2020 2021 2022 | HUSQVARNA FC 350 2019 2020 2021 2022 | HUSQVARNA FX 350 2020 2021 2022 | KTM SX-F 250 2019 2020 2021 2022 | KTM SX-F 350 2019 2020 2021 2022 | KTM XC-F 250 2019 2020 2021 2022 | KTM XC-F 350 2019 2020 2021 2022

---

**SKID PLATE FOR KTM**  
0024253



0024253.203



0024253.313

---

**APPLICATIONS**

KTM EXC-F 450 2020 2021 2022 2023 | KTM EXC-F 500 2020 2021 2022 2023 | KTM XCF-W 450 2023 | KTM XCF-W 500 2020 2021 2022 2023



---

**SKID PLATE FOR KTM**  
0024021



0024021.010



0024021.090

---

**APPLICATIONS**

KTM EXC-F 250 2020 2021 2022 2023 | KTM EXC-F 350 2020 2021 2022 2023 | KTM XCF-W 350 2020 2021 2022 2023

**SKID PLATE FOR KTM**  
0023764



0023764.010



0023764.090

**APPLICATIONS**

KTM EXC 250 TPI 2020 2021 2022 2023 | KTM EXC 300 TPI 2020 2021 2022 2023 | KTM XC-W 250 TPI 2020 2021 2022 2023 | KTM XC-W 300 TPI 2020 2021 2022 2023

SKID PLATE FOR  
KTM/HUSQVARNA/GAS  
GAS  
0023660



0023660.209



0023660.237



0023660.313



0023660.315

## FEATURES

Last generation skid plate with built-in fin  
Printed fin designed to protect the suspension link from impacts, mud and sand. It allows the bike to easily slide over natural obstacles (whoops, rocks, trunks) Its design ensures the best cover around the link, thus guaranteeing a clean ride  
Plastic 6mm thick for the best frame and engine protection  
Protection areas extended over the engine covers, on the water pump and on the foot peg mounts

Discharge areas to improve lightness and airflow and to ease the cleaning process behind the skid plate  
Design developed to reduce the presence of mud and debris around the engine  
Possibility to combine its use with X-POWER (clutch and ignition cover protection)  
Carbon look refinishing  
Easy mounting on the original fastenings of the bike

## PRODUCT DETAILS

Skid plate realised in two joined sections: | Highly impact-resistant plastic skid plate | Fin for suspension link protection: blend rubber + plastic which allows resistance to impacts and better elasticity

Made In: Italy

## APPLICATIONS

GAS GAS EX 250 2022 2023 | GAS GAS EX 300 2021 2022 2023 | GAS GAS MC 250 2022 2023 | HUSQVARNA TC 250 2019 2020 2021 2022 | HUSQVARNA TX 300 2020 2021 2022 | KTM SX 250 2019 2020 2021 2022 | KTM XC 250 2019 2023 2024 | KTM XC 250 TPI 2020 2021 2022 | KTM XC 300 2019 | KTM XC 300 TPI 2020 2021 2022

**SKID PLATE FOR  
KTM/HUSQVARNA/GAS  
GAS  
0023601**



0023601.203



0023601.232



0023601.313



0023601.315

**APPLICATIONS**

GAS GAS EX 450 F 2021 2022 2023 | GAS GAS MC 450 F 2021 2022 2023 | HUSQVARNA FC 450 2019 2020 2021 2022 | HUSQVARNA FX 450 2020 2021 2022 | KTM SX-F 450 2019 2020 2021 2022 | KTM XC-F 450 2019 2020 2021 2022

**SKID PLATE FOR  
KTM/HUSQVARNA/GAS  
GAS  
0022895**



0022895.011



0022895.030



0022895.090

**APPLICATIONS**

GAS GAS MC 85 2021 2022 2023 2024 | HUSQVARNA TC 85 2018 2019 2020 2021 2022 2023 2024 | KTM SX 85 2018 2019 2020 2021 2022 2023 2024

**SKID PLATE FOR  
KTM/HUSQVARNA**  
0022823



0022823.090



0022823.030

**APPLICATIONS**

HUSQVARNA FE 250 2017 2018 2019 | HUSQVARNA FE 350 2017 2018 2019 | KTM EXC-F 250 2017 2018 2019 | KTM EXC-F 350 2017 2018 2019

**SKID PLATE FOR  
KTM/HUSQVARNA  
0022332**



0022332.090

---

**APPLICATIONS**

HUSQVARNA TC 250 2017 2018 | KTM SX 250 2017 2018

**SKID PLATE FOR  
KTM/HUSQVARNA**  
**0022320**



0022320.030



0022320.090

---

**APPLICATIONS**

HUSQVARNA TC 85 2014 2015 2016 2017 | KTM SX 85 2013 2014 2015 2016 2017



**SKID PLATE FOR  
KTM/HUSQVARNA/GAS  
GAS  
0022319**



0022319.090

**APPLICATIONS**

GAS GAS MC 125 2021 2022 2023 | HUSQVARNA TC 125 2016 2017 2018 2019 2020 2021 2022 | HUSQVARNA TE 150I 2020 2021 2022 2023 | HUSQVARNA TX 125 2017 2018 2019 | KTM EXC 150 TPI 2020 2021 2022 2023 | KTM SX 125 2016 2017 2018 2019 2020 2021 2022 | KTM SX 150 2016 2017 2018 2019 2020 | KTM XC 125 2020 2021 2022 | KTM XC-W 125 2017 2018 2019 | KTM XC-W 150 TPI 2019 2020 2021 2022 2023

**SKID PLATE FOR  
KTM/HUSQVARNA  
0022318**



0022318.011



0022318.030



0022318.090

**APPLICATIONS**

HUSQVARNA TE 250 2017 | HUSQVARNA TE 250I 2018 2019 | HUSQVARNA TE 300 2017 | HUSQVARNA TE 300I 2018 2019 | KTM EXC 250 2017  
| KTM EXC 250 TPI 2018 2019 | KTM EXC 300 2017 | KTM EXC 300 TPI 2018 2019 | KTM XC-W 250 TPI 2019 | KTM XC-W 300 TPI 2019

---

**SKID PLATE FOR KTM**  
0022309



0022309.011



0022309.090

---

**APPLICATIONS**

KTM EXC-F 450 2017 2018 2019 | KTM EXC-F 500 2017 2018 2019

**SKID PLATE FOR  
KTM/HUSQVARNA  
0021755**



0021755.011



0021755.090



0021755.091



0021755.232

**APPLICATIONS**

HUSQVARNA FC 450 2016 2017 2018 | HUSQVARNA FE 450 2017 2018 2019 | HUSQVARNA FE 501 2017 2018 2019 | KTM SX-F 450 2016 2017 2018

**SKID PLATE FOR  
KTM/HUSQVARNA**  
0021727



0021727.011



0021727.030



0021727.090

**APPLICATIONS**

HUSQVARNA FC 250 2016 2017 2018 | HUSQVARNA FC 350 2016 2017 2018 | KTM SX-F 250 2016 2017 2018 | KTM SX-F 350 2016 2017 2018

**SKID PLATE FOR  
KTM/HUSQVARNA**  
0016312



0016312.010

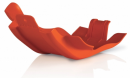
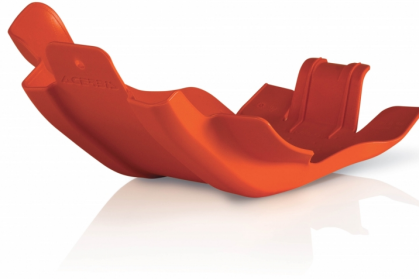


0016312.090

**APPLICATIONS**

HUSQVARNA FC 450 2014 2015 | HUSQVARNA FE 450 2014 2015 2016 | HUSQVARNA FE 501 2014 2015 2016 | KTM EXC-F 450 2012 2013 2014 2015 2016 | KTM EXC-F 500 2012 2013 2014 2015 2016 | KTM SX-F 450 2013 2014 2015

**SKID PLATE FOR  
KTM/HUSQVARNA  
0016310**



0016310.010



0016310.090

**APPLICATIONS**

HUSQVARNA FE 250 2014 2015 2016 | HUSQVARNA FE 350 2014 2015 2016 | KTM EXC-F 250 2014 2015 2016 | KTM EXC-F 350 2012 2013 2014 2015 2016

**SKID PLATE FOR  
KTM/HUSQVARNA**  
**0015950**



0015950.090

---

**APPLICATIONS**

HUSQVARNA TC 125 2014 2015 | HUSQVARNA TE 125 2014 2015 2016 | KTM EXC 125 2012 2013 2014 2015 2016 | KTM EXC 200 2012 2013 2014 2015 2016 | KTM SX 125 2011 2012 2013 2014 2015 | KTM SX 150 2011 2012 2013 2014 2015



**SKID PLATE FOR  
KTM/HUSQVARNA**  
**0015936**



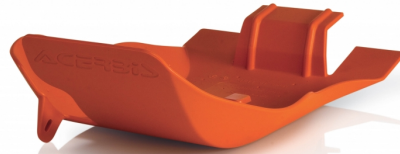
0015936.090

---

## **APPLICATIONS**

HUSQVARNA FC 250 2014 2015 | HUSQVARNA FC 350 2014 2015 | KTM SX-F 250 2013 2014 2015 | KTM SX-F 350 2011 2012 2013 2014 2015

**SKID PLATE FOR  
KTM/HUSQVARNA  
0013683**



0013683.010



0013683.090

**APPLICATIONS**

HUSQVARNA TC 250 2014 2015 2016 | HUSQVARNA TE 250 2014 2015 2016 | HUSQVARNA TE 300 2014 2015 2016 | KTM EXC 250 2006 2007 2008 2009 2010 2011 2012 2013 2014 2015 2016 | KTM EXC 300 2006 2007 2008 2009 2010 2011 2012 2013 2014 2015 2016 | KTM SX 250 2006 2007 2008 2009 2010 2011 2012 2013 2014 2015 2016

**SKID PLATE FOR KTM**  
0011687



0011687.090

**APPLICATIONS**

KTM EXC-F 450 2008 2009 2010 2011 | KTM EXC-F 500 2008 2009 2010 2011

SKID PLATE FOR  
YAMAHA  
0026456



0026456.090



0026456.040

## FEATURES

Next-generation skid plate developed to provide maximum protection of the areas of greatest impact.  
Allows smooth sliding over obstacles found on motocross tracks (whoops, boulders) ensuring a smooth ride.  
Extended protection areas on the side crankcases, water pump and footpeg area

Presence of exhaust areas to give more lightness, aeration and facilitate washing operations inside the skid plate  
Designed to reduce the entry of mud and debris  
Weight: 900g

## PRODUCT DETAILS

96% Plastic | 4% Steel

Made In: Italy

## APPLICATIONS

FANTIC XXF 250 2025 | YAMAHA WR 250 F 2025 | YAMAHA YZ 250 F 2024 2025 | YAMAHA YZ 250 FX 2024 2025

SKID PLATE FOR  
YAMAHA  
0025950



0025950.040



0025950.090

## FEATURES

Latest generation skid plate with integrated fin  
Fin designed to protect the linkage of the shock from impacts, mud and sand. It allows you to easily slide over natural obstacles (Whoops, stones, logs) ensuring a smooth ride. The design ensures maximum adherence to the link  
It offers maximum protection to the chassis and motor.  
Extended protection areas on the side housings, on the water pump and in the chassis areas  
Presence of exhaust areas to give more lightness, ventilation and facilitate the washing operations inside the skid plate

Design designed to reduce the ingress of mud and debris  
Possibility to combine its use with Acerbis X-Power (clutch and ignition cover protection)  
Protection of the side housings, on the water pump and in the areas of the chassis  
Easily mounts by taking advantage of 2 original holes and an integrated bracket that hugs the frame, making it stable and sturdy mounting  
Two-tone label with logo.

## APPLICATIONS

FANTIC XXF 450 2024 2025 | YAMAHA WR 450 F 2024 2025 | YAMAHA YZ 450 F 2023 2024 2025 | YAMAHA YZ 450 FX 2024 2025

SKID PLATE FOR  
TENERE 700  
0025193



0025193.090

## FEATURES

### CONSTRUCTION AND DESIGN:

Next generation sub-engine made with high strength plastic with integrated fin

Fin designed to protect the shock absorber linkage from impacts, mud and sand. It allows you to slide easily on natural obstacles ensuring a smooth ride. The design ensures maximum adherence to the link

Impact resistant material effectively protects against stones, earth and mud.

Flexible and lightweight plastic reduces vibration and surface damage to chassis and engine

The air intakes are designed to give more lightness, aeration and facilitate the washing operations inside the sub-engine, reducing the entrance of gravel, earth and mud.

Using the original bindings of the bike the assembly/ disassembly is intuitive to facilitate the normal maintenance and washing of the engine.

Extended protection areas on the side housings, on the water pump and in the chassis areas

Compatible with simultaneous use of X-Power (Protection crankcase ignition and clutch)

## PRODUCT DETAILS

Nylon 96% | Others 4%

Made In: Italy

## APPLICATIONS

YAMAHA TENERE 700 2019 2020 2021 2022 2023 2024 | YAMAHA TENERE 700 EXPLORE EDITIO 2023 2024 | YAMAHA TENERE 700 EXTREME EDITIO 2023 2024 | YAMAHA TENERE 700 RALLY EDITION 2020 2021 2022 2023 2024

**PRODUCTS RELATED**



0024743  
FUEL TANKS FOR TENERE 700  
23L

- 090.700 ■ 110.700
- 120.700



0025138  
X-POWER YAMAHA FOR  
TENERE 700

- 090



0024666  
X-GRIP FRAME PROTECTOR  
FOR YAMAHA

- 090 ■ 314
- 316 ■ 323



0025145  
TEKETMAGNET SWING ARM  
FOR TENERE 700

- 090



0024989  
HANDGUARDS ARGON YAM  
TT700/T900

- 030 ■ 090
- 209 ■ 237
- 251 ■ 293
- 349

SKID PLATE FOR  
YAMAHA TENERE 700  
0024691



0024691.090

## FEATURES

### CONSTRUCTION AND DESIGN:

Latest generation sub-engine made of high-strength plastic with integrated fin and aluminum stone-guard plate

Fin designed to protect the shock absorber linkage from impacts, mud and sand, it allows you to slide easily over natural obstacles (whoops, stones, logs) ensuring a smooth ride. The design ensures maximum adherence to the link

8 mm thickness for maximum frame and engine protection

Design studied to reduce the entry of mud and debris into the engine  
Using the supplied brackets and taking advantage of the original motorcycle attachments, it is possible to easily attach the under-engine

## PRODUCT DETAILS

NYLON 72% | Steel 16% | Aluminium 12%

Made In: Italy

## APPLICATIONS

YAMAHA TENERE 700 2019 2020



**SKID PLATE FOR  
YAMAHA**  
0023922



0023922.237



0023922.315



0023922.245

**APPLICATIONS**

FANTIC XE 125 2021 2022 2023 2024 2025 | FANTIC XX 125 2021 2022 2023 2024 2025 | YAMAHA YZ 125 2006 2007 2008 2009 2010 2011 2012 2013 2014 2015 2016 2017 2018 2019 2020 2021 2022 2023 2024 2025

SKID PLATE FOR  
YAMAHA  
0023108



0023108.030



0023108.040



0023108.090

APPLICATIONS

FANTIC XEF 250 2021 2022 2023 2024 2025 | FANTIC XEF 310 2024 2025 | FANTIC XEF 450 2021 2022 2023 2024 2025 | FANTIC XXF 250 2021 2022 2023 2024 | YAMAHA WR 250 F 2020 2021 2022 2023 2024 | YAMAHA WR 450 F 2019 2020 2021 2022 2023 | YAMAHA YZ 250 F 2019 2020 2021 2022 2023 | YAMAHA YZ 250 FX 2019 2020 2021 2022 2023 2024 | YAMAHA YZ 450 F 2018 2019 2020 2021 2022 | YAMAHA YZ 450 FX 2019 2020 2021 2022 2023

PRODUCTS RELATED



0025468  
FULL PLASTIC KIT FOR  
YAMAHA

- |       |       |
|-------|-------|
| □ 030 | ■ 040 |
| ■ 070 | ■ 090 |
| ■ 249 | ■ 252 |
| ■ 316 | ■ 319 |
| ■ 322 | ■ 336 |
| ■ 553 | ■ 714 |



0023631  
FULL PLASTIC KIT FOR  
YAMAHA

- |           |           |
|-----------|-----------|
| □ 030     | ■ 040     |
| ■ 041     | ■ 070     |
| ■ 072     | ■ 083     |
| ■ 090     | ■ 092     |
| ■ 132     | ■ 252     |
| ■ 316     | ■ 553     |
| ■ 553.021 | ■ 553.023 |
| ■ 714     |           |

**SKID PLATE FOR  
YAMAHA  
0022400**



0022400.040



0022400.090

**APPLICATIONS**

FANTIC XE 300 2024 2025 | FANTIC XX 250 2021 2022 2023 2024 2025 | YAMAHA YZ 250 2005 2006 2007 2008 2009 2010 2011 2012 2013 2014 2015 2016 2017 2018 2019 2020 2021 2022 2023 2024 2025

**SKID PLATE FOR  
YAMAHA**  
0017574



0017574.090

---

**APPLICATIONS**

YAMAHA YZ 250 F 2014 2015 2016 2017 2018 | YAMAHA YZ 450 F 2014 2015 2016 2017

---

**SKID PLATE FOR  
KAWASAKI/YAMAHA**  
0011678



0011678.090

---

**APPLICATIONS**

KAWASAKI KLX 450 2008 2009 2010 2011 2012 2013 2014 2015 2016 2017 2018 | YAMAHA WR 250 F 2007 2008 2009 2010 2011 2012 2013 2014 2015 2016 2017 2018 2019 | YAMAHA WR 450 F 2007 2008 2009 2010 2011 2012 2013 2014 2015 2016 2017 2018



SKID PLATE FOR  
KTM/HUSQVARNA/GAS  
GAS  
0026822



0026822.040



0026822.011.016



0026822.090

## FEATURES

Latest-generation skid plate with integrated fin  
Co-moulded fin designed to protect the shock absorber linkage from impacts, mud and sand. It allows easy sliding over natural obstacles (whoops, stones, logs) ensuring a smooth ride. Design ensures maximum linkage grip  
6mm thickness for maximum chassis and engine protection  
Extended protection areas on the side casings, water pump and footpeg areas of the chassis  
Presence of exhaust areas to give more lightness, ventilation and facilitate washing inside the skid plate

Design to reduce mud and debris ingress  
Compatible with simultaneous use of X-Power (ignition crankcase and clutch protection)  
Protection of the side crankcases, on the water pump and in the frame areas around the footrests  
It is easily mounted by using the frame cross-member near the single shock absorber and by means of two supplied screws using the two original slots at the front  
Two-tone logo plate  
Weight: 700g

## PRODUCT DETAILS

98% Polypropylene | 2% Others

Made In: Italy

## APPLICATIONS

GAS GAS MC 85 2025 | HUSQVARNA TC 85 2025 | KTM SX 85 2025



**SKID PLATE FOR  
KTM/HUSQVARNA/GAS  
GAS  
0026600**



0026600.011.016



0026600.090

## FEATURES

Latest-generation skid plate with integrated fin  
Co-moulded fin designed to protect the shock absorber linkage from impacts, mud and sand. It allows easy sliding over natural obstacles (whoops, stones, logs) ensuring a smooth ride. Design ensures maximum linkage grip  
6mm thickness for maximum chassis and engine protection  
Extended protection areas on the side casings, water pump and footpeg areas of the chassis  
Presence of exhaust areas to give more lightness, ventilation and facilitate washing inside the skid plate

Design to reduce mud and debris ingress  
Compatible with simultaneous use of X-Power (ignition crankcase and clutch protection)  
Protection of the side crankcases, on the water pump and in the frame areas around the footrests  
It is easily mounted by using the frame cross-member near the single shock absorber and by means of two supplied screws using the two original slots at the front  
Two-tone logo plate  
Weight: 700g

## PRODUCT DETAILS

98% Polypropylene | 2% Others

Made In: Italy

## APPLICATIONS

GAS GAS MC 50 2024 2025 | HUSQVARNA TC 50 2024 2025 | KTM SX 50 2024 2025

SKID PLATE FOR  
KTM/HUSQVARNA/GAS  
GAS  
0025754



0025754.090



0025754.011.016



0025754.040

## FEATURES

Latest-generation skid plate with integrated fin  
Co-moulded fin designed to protect the shock absorber linkage from impacts, mud and sand. It allows easy sliding over natural obstacles (whoops, stones, logs) ensuring a smooth ride. Design ensures maximum linkage grip  
6mm thickness for maximum chassis and engine protection  
Extended protection areas on the side casings, water pump and footpeg areas of the chassis  
Presence of exhaust areas to give more lightness, ventilation and facilitate washing inside the skid plate

Design to reduce mud and debris ingress  
Compatible with simultaneous use of X-Power (ignition crankcase and clutch protection)  
Protection of the side crankcases, on the water pump and in the frame areas around the footrests  
It is easily mounted by using the frame cross-member near the single shock absorber and by means of two supplied screws using the two original slots at the front  
Two-tone logo plate  
Weight: 700g

## PRODUCT DETAILS

98% Polypropylene | 2% Others

Made In: Italy

## APPLICATIONS

GAS GAS EC 125 2025 | GAS GAS MC 125 2024 2025 | HUSQVARNA TC 125 2023 2024 2025 | HUSQVARNA TC 150 2025 | HUSQVARNA TE 125 2025 | HUSQVARNA TE 150 2024 2025 | KTM SX 125 2023 2024 2025 | KTM XC 125 2023 2024 2025



SKID PLATE FOR  
KTM/HUSQVARNA/GAS  
GAS  
0025755



0025755.011.016



0025755.040



0025755.090

## FEATURES

Latest generation sub-engine with integrated fin  
Co-molded fin designed to protect the shock absorber linkage from impact, mud and sand. Allows easy sliding over natural obstacles (whoops, stones, logs) ensuring a smooth ride.  
Design ensures maximum grip on the link  
6mm thickness for maximum frame and engine protection  
Extended protection areas on the side crankcases, water pump, and in the areas of the frame footrest area  
Presence of drainage areas to impart more lightness, aeration, and facilitate washing operations inside the sub-engine

Design studied to reduce the ingress of mud and debris  
Compatible with simultaneous use of X-Power (Ignition and Clutch Crankcase Protection)  
Protection of the side crankcases, on the water pump and in the areas of the frame footrest area  
It is easily mounted by taking advantage of the frame sleeper near the mono-shock absorber and through two supplied screws that use the two original slots in the front  
Possibility of simultaneous use with x-power  
Two-tone nameplate with logo  
Weight: 700g

## PRODUCT DETAILS

98% Polypropylene | 2% Other

Made In: Italy

## APPLICATIONS

GAS GAS EC 250 2024 2025 | GAS GAS EC 300 2024 2025 | GAS GAS EX 250 2024 2025 | GAS GAS EX 300 2024 2025 | GAS GAS MC 250 2024 2025 | HUSQVARNA TC 250 2023 2024 2025 | HUSQVARNA TC 300 2025 | HUSQVARNA TE 250 2024 2025 | HUSQVARNA TE 300 2024 2025 | HUSQVARNA TE 300 PRO 2024 2025 | HUSQVARNA TX 300 2023 2024 2025 | KTM SX 150 2025 | KTM SX 250 2023 2024 2025 | KTM SX 300 2023 2024 2025 | KTM XC 250 2023 2024 2025 | KTM XC 300 2023 2024 2025

SKID PLATE FOR  
KTM/HUSQVARNA/GAS  
GAS  
0025336



0025336.011.016



0025336.040



0025336.090

## FEATURES

### CONSTRUCTION AND DESIGN:

Design designed for optimal protection of the chassis and motor.  
Fin designed to protect the shock absorber linkage from impacts, mud and sand. It allows you to easily slide over natural obstacles (Whoops, stones, logs) ensuring a smooth ride. The design ensures maximum adherence to the link  
Impact resistant material effectively protects against stones, earth and mud.  
Flexible and lightweight plastic reduces vibration and surface damage to chassis and engine  
The air intakes are designed to give more lightness, aeration and facilitate the washing operations inside the sub-engine, reducing the entrance of gravel, earth and mud.

Exploiting the original attacks of the bike the assembly/ disassembly is intuitive and to facilitate the normal maintenance and washing of the engine.

Extended protection areas on the side housings, on the water pump and in the chassis areas

Compatible with simultaneous use of X-Power (Ignition and clutch housing protection)

## PRODUCT DETAILS

Nyoln 96% | Others 4%

Made In: Italy

## APPLICATIONS

GAS GAS EC 250 F 2024 2025 | GAS GAS EC 350 F 2024 2025 | GAS GAS EX 250 F 2024 2025 | GAS GAS EX 350 F 2024 2025 | GAS GAS MC 250 F 2024 2025 | GAS GAS MC 350 F 2024 2025 | HUSQVARNA FC 250 2023 2024 2025 | HUSQVARNA FC 350 2023 2024 2025 | HUSQVARNA FE 250 2024 2025 | HUSQVARNA FE 350 2024 2025 | HUSQVARNA FE 350 PRO 2024 2025 | HUSQVARNA FE 350 S 2024 2025 | HUSQVARNA FE 350 W 2024 | HUSQVARNA FX 350 2023 2024 2025 | KTM SX-F 250 2023 2024 2025 | KTM SX-F 350 2023 2024 2025 | KTM XC-F 250 2023 2024 2025 | KTM XC-F 350 2023 2024 2025

**SKID PLATES / HUSQVARNA**  
**SKID PLATE FOR KTM/HUSQVARNA/GAS GAS**



SKID PLATE FOR  
KTM/HUSQVARNA/GAS  
GAS  
0025445



0025445.090



0025445.040



0025445.011.016

## FEATURES

Latest generation skid plate with integrated fin  
Fin designed to protect the shock absorber linkage from impacts, mud and sand. It allows easy sliding over natural obstacles (whoops, stones, logs) ensuring a smooth ride. Design ensures maximum linkage grip  
Offers maximum protection for the chassis and engine.  
Extended protection areas on the side casings, water pump and footpeg areas of the frame

Presence of exhaust areas to give more lightness, ventilation and facilitate washing inside the skid plate  
Design to reduce mud and debris ingress  
Compatible with simultaneous use of Acerbis X-Power (Ignition and clutch cover protection)  
Easily mounted using the four original holes in the frame  
Two-tone logo plate  
Weight: 700g

## PRODUCT DETAILS

98% Polypropylene | 2% Other

Made In: Italy

## APPLICATIONS

GAS GAS EC 450 F 2024 2025 | GAS GAS EC 500 F 2024 2025 | GAS GAS EX 450 F 2024 2025 | GAS GAS MC 450 F 2024 2025 | HUSQVARNA FC 450 2023 2024 2025 | HUSQVARNA FE 450 2024 2025 | HUSQVARNA FE 501 2024 2025 | HUSQVARNA FE 501 S 2024 2025 | HUSQVARNA FE 501 W 2024 | HUSQVARNA FX 450 2023 2024 2025 | KTM SX-F 450 2023 2024 2025 | KTM XC-F 450 2023 2024 2025

**SKID PLATE FOR  
HUSQVARNA/GAS GAS**  
0024023



0024023.315

**APPLICATIONS**

GAS GAS EC 250 F 2021 2022 2023 | GAS GAS EC 350 F 2021 2022 2023 | HUSQVARNA FE 250 2020 2021 2022 2023 | HUSQVARNA FE 350 2020 2021 2022 2023 | HUSQVARNA FE 350 S 2022 2023

**SKID PLATE FOR FOR  
KTM/HUSQVARNA/GAS  
GAS  
0024022**



0024022.315



0024022.237

**APPLICATIONS**

GAS GAS EC 250 2021 2022 2023 | GAS GAS EC 300 2021 2022 2023 | HUSQVARNA TE 250I 2020 2021 2022 2023 | HUSQVARNA TE 300I 2020 2021 2022 2023 | KTM XC-W 150 TPI 2020 2021 2022 2023

**SKID PLATE FOR  
KTM/HUSQVARNA/GAS  
GAS  
0023601**



0023601.203



0023601.232



0023601.313



0023601.315

**APPLICATIONS**

GAS GAS EX 450 F 2021 2022 2023 | GAS GAS MC 450 F 2021 2022 2023 | HUSQVARNA FC 450 2019 2020 2021 2022 | HUSQVARNA FX 450 2020 2021 2022 | KTM SX-F 450 2019 2020 2021 2022 | KTM XC-F 450 2019 2020 2021 2022

SKID PLATE FOR  
KTM/HUSQVARNA/GAS  
GAS  
0023660



0023660.209



0023660.237



0023660.313



0023660.315

## FEATURES

Last generation skid plate with built-in fin  
Printed fin designed to protect the suspension link from impacts, mud and sand. It allows the bike to easily slide over natural obstacles (whoops, rocks, trunks) Its design ensures the best cover around the link, thus guaranteeing a clean ride  
Plastic 6mm thick for the best frame and engine protection  
Protection areas extended over the engine covers, on the water pump and on the foot peg mounts

Discharge areas to improve lightness and airflow and to ease the cleaning process behind the skid plate  
Design developed to reduce the presence of mud and debris around the engine  
Possibility to combine its use with X-POWER (clutch and ignition cover protection)  
Carbon look refinishing  
Easy mounting on the original fastenings of the bike

## PRODUCT DETAILS

Skid plate realised in two joined sections: | Highly impact-resistant plastic skid plate | Fin for suspension link protection: blend rubber + plastic which allows resistance to impacts and better elasticity

Made In: Italy

## APPLICATIONS

GAS GAS EX 250 2022 2023 | GAS GAS EX 300 2021 2022 2023 | GAS GAS MC 250 2022 2023 | HUSQVARNA TC 250 2019 2020 2021 2022 | HUSQVARNA TX 300 2020 2021 2022 | KTM SX 250 2019 2020 2021 2022 | KTM XC 250 2019 2023 2024 | KTM XC 250 TPI 2020 2021 2022 | KTM XC 300 2019 | KTM XC 300 TPI 2020 2021 2022



**SKID PLATE FOR  
KTM/HUSQVARNA/GAS  
GAS  
0022319**



0022319.090

**APPLICATIONS**

GAS GAS MC 125 2021 2022 2023 | HUSQVARNA TC 125 2016 2017 2018 2019 2020 2021 2022 | HUSQVARNA TE 150I 2020 2021 2022 2023 | HUSQVARNA TX 125 2017 2018 2019 | KTM EXC 150 TPI 2020 2021 2022 2023 | KTM SX 125 2016 2017 2018 2019 2020 2021 2022 | KTM SX 150 2016 2017 2018 2019 2020 | KTM XC 125 2020 2021 2022 | KTM XC-W 125 2017 2018 2019 | KTM XC-W 150 TPI 2019 2020 2021 2022 2023

**SKID PLATE FOR  
KTM/HUSQVARNA/GAS  
GAS  
0022895**



0022895.011



0022895.030



0022895.090

**APPLICATIONS**

GAS GAS MC 85 2021 2022 2023 2024 | HUSQVARNA TC 85 2018 2019 2020 2021 2022 2023 2024 | KTM SX 85 2018 2019 2020 2021 2022 2023 2024

SKID PLATE FOR GAS  
GAS  
0023661



0023661.209



0023661.237



0023661.313



0023661.315

## FEATURES

Last generation skid plate with built-in fin  
Printed fin designed to protect the suspension link from impacts, mud and sand. It allows the bike to easily slide over natural obstacles (whoops, rocks, trunks) Its design ensures the best cover around the link, thus guaranteeing a clean ride  
Plastic 6mm thick for the best frame and engine protection  
Protection areas extended over the engine covers, on the water pump and on the foot peg mounts

Discharge areas to improve lightness and airflow and to ease the cleaning process behind the skid plate  
Design developed to reduce the presence of mud and debris around the engine  
Possibility to combine its use with X-POWER (clutch and ignition cover protection)  
Carbon look refinishing  
Easy mounting on the original fastenings of the bike

## PRODUCT DETAILS

Skid plate realised in two joined sections: | Highly impact-resistant plastic skid plate | Fin for suspension link protection: blend rubber + plastic which allows resistance to impacts and better elasticity

Made In: Italy

## APPLICATIONS

GAS GAS EX 250 F 2021 2022 2023 | GAS GAS EX 350 F 2021 2022 2023 | GAS GAS MC 250 F 2021 2022 2023 | GAS GAS MC 350 F 2022 2023

SKID PLATE FOR  
ROYAL ENFIELD  
0026693



0026693.090

## FEATURES

**Smooth Glide Over Obstacles:** Advanced under-engine design allows for easy sliding over natural obstacles such as rocks and logs, ensuring a smoother ride.

**Maximum Protection:** Provides comprehensive protection for the frame and engine.

**Extended Coverage:** Includes additional protection for side covers, the water pump, and frame areas around the footrests.

**Ventilation and Easy Cleaning:** Features exhaust areas for improved ventilation, reduced weight, and easier washing inside the under-engine area.

**Mud and Debris Reduction:** Designed to minimize the entry of mud and debris during rides.

**X-Power Compatibility:** Can be used simultaneously with Acerbis X-Power for ignition and clutch cover protection.

**Easy Assembly:** Quickly installs with the included Acerbis kit.

**Durable and Lightweight:** Weighs 1050 grams, offering excellent protection without excessive weight.

**Not compatible with the original Royal Enfield Engine guard bars cod. KXA00437**

## PRODUCT DETAILS

96% Plastic | 4% Other

Made In: Italy

**APPLICATIONS**

ROYAL ENFIELD HIMALAYAN 450 2024 2025