

X-POWER FOR
KTM/HUSQVARNA
0025757



0025757.040



0025757.090



0025757.011.016

FEATURES

Protects against wear, shock, abrasion, mud sand and debris
Right side: clutch cover protection, water pump and lower crankcase
Left side: ignition cover protection and ignition cable
Resistant to high temperatures, numerous vents prevent overheating

Attaches with the original screws adhering perfectly to the clutch/ignition cover
Mounting kit included
Compatible with Acerbis sub-engine covers
Engraved logo
Weight: 350g

PRODUCT DETAILS

96% Nylon | 4% Brass

Made In: Italy

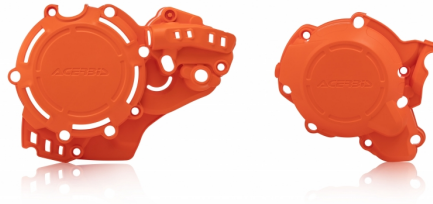
APPLICATIONS

HUSQVARNA TC 250 2023 2024 2025 | HUSQVARNA TX 300 2023 2024 2025 | KTM SX 250 2023 2024 2025 | KTM SX 300 2023 2024 2025 | KTM XC 250 2023 2024 2025 | KTM XC 300 2023 2024 2025

SIZES

16 016

**X-POWER FOR
KTM/HUSQVARNA**
0023674



0023674.011.016



0023674.030



0023674.090

FEATURES

Motor Crankcase and Ignition/Clutch covers that protect against wear from boots, impacts, dirt, mud, and other debris
Right side: provides protection for the clutch cover, water pump, and lower casing
Left side: provides protection to the ignition cover and clutch actuator

Molded openings to access the filter cover and oil cap
Easy to install by utilizing the original crankcase and ignition/clutch cover bolts
Resistant to high temperatures
Designed not to interfere with boots
Compatible with ACERBIS skid plates

APPLICATIONS

GAS GAS EX 250 2022 2023 | GAS GAS EX 300 2021 2022 2023 | GAS GAS MC 250 2022 2023 | HUSQVARNA TC 250 2019 2020 2021 2022 | HUSQVARNA TE 250i 2020 2021 2022 2023 | HUSQVARNA TE 300i 2020 2021 2022 2023 | HUSQVARNA TX 300 2020 2021 2022 | KTM EXC 250 TPI 2020 2021 2022 2023 | KTM EXC 300 TPI 2020 2021 2022 2023 | KTM SX 250 2019 2020 2021 2022 | KTM XC 250 TPI 2020 2021 2022 | KTM XC 300 TPI 2020 2021 2022 | KTM XC-W 250 TPI 2020 2021 2022 2023 | KTM XC-W 300 TPI 2020 2021 2022 2023

SIZES

16 016

X-POWER FOR
KTM/HUSQVARNA
0023573



0023573.011.016



0023573.030



0023573.090

FEATURES

Motor Crankcase and Ignition/Clutch covers that protect against wear from boots, impacts, dirt, mud, and other debris
Right side: provides protection for the clutch cover, water pump, and lower casing
Left side: provides protection to the ignition cover and clutch actuator

Molded openings to access the filter cover and oil cap
Easy to install by utilizing the original crankcase and ignition/clutch cover bolts
Resistant to high temperatures
Designed not to interfere with boots
Compatible with ACERBIS skid plates

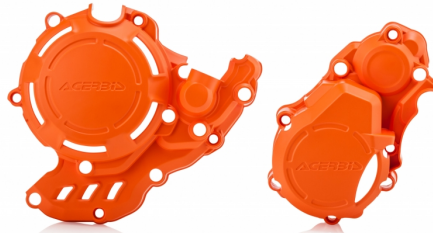
APPLICATIONS

GAS GAS EX 250 F 2021 2022 2023 | GAS GAS EX 350 F 2021 2022 2023 | GAS GAS MC 250 F 2021 2022 2023 | GAS GAS MC 350 F 2022 2023 | HUSQVARNA FC 250 2016 2017 2018 2019 2020 2021 2022 | HUSQVARNA FC 350 2016 2017 2018 2019 2020 2021 2022 | HUSQVARNA FX 350 2020 2021 2022 | KTM SX-F 250 2016 2017 2018 2019 2020 2021 2022 | KTM SX-F 350 2016 2017 2018 2019 2020 2021 2022 | KTM XC-F 250 2020 2021 2022 | KTM XC-F 350 2020 2021 2022

SIZES

16 016

**X-POWER FOR
KTM/HUSQVARNA**
0023469



0023469.011.016



0023469.030



0023469.090

FEATURES

Motor Crankcase and Ignition/Clutch covers that protect against wear from boots, impacts, dirt, mud, and other debris
Right side: provides protection for the clutch cover, water pump, and lower casing
Left side: provides protection to the ignition cover and clutch actuator

Molded openings to access the filter cover and oil cap
Easy to install by utilizing the original crankcase and ignition/clutch cover bolts
Resistant to high temperatures
Designed not to interfere with boots
Compatible with ACERBIS skid plates

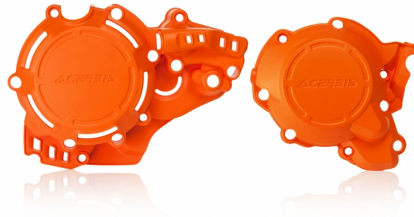
APPLICATIONS

GAS GAS EC 250 F 2021 2022 2023 | GAS GAS EC 350 F 2021 2022 2023 | HUSQVARNA FE 250 2017 2018 2019 2020 2021 2022 2023 | HUSQVARNA FE 350 2017 2018 2019 2020 2021 2022 2023 | HUSQVARNA FE 350 S 2022 2023 | KTM EXC-F 250 2017 2018 2019 2020 2021 2022 2023 | KTM EXC-F 350 2017 2018 2019 2020 2021 2022 2023 | KTM FREERIDE 250 F 2018 2019 2020 | KTM XCF-W 350 2020 2021 2022 2023

SIZES

16 016

X-POWER FOR
KTM/HUSQVARNA
0023468



0023468.011.016



0023468.030



0023468.090

FEATURES

Motor Crankcase and Ignition/Clutch covers that protect against wear from boots, impacts, dirt, mud, and other debris
Right side: provides protection for the clutch cover, water pump, and lower casing
Left side: provides protection to the ignition cover and clutch actuator

Molded openings to access the filter cover and oil cap
Easy to install by utilizing the original crankcase and ignition/clutch cover bolts
Resistant to high temperatures
Designed not to interfere with boots
Compatible with ACERBIS skid plates

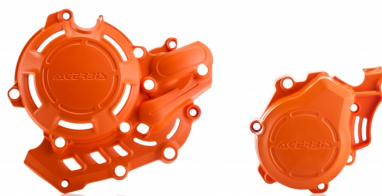
APPLICATIONS

HUSQVARNA TC 250 2017 2018 | HUSQVARNA TE 250 2017 | HUSQVARNA TE 250I 2018 2019 | HUSQVARNA TE 300 2017 | HUSQVARNA TE 300I 2018 2019 | KTM EXC 250 2017 | KTM EXC 250 TPI 2018 2019 | KTM EXC 300 2017 | KTM EXC 300 TPI 2018 2019 | KTM SX 250 2017 2018

SIZES

16 016

**X-POWER FOR
KTM/HUSQVARNA**
0023153



0023153.011.016



0023153.020



0023153.061



0023153.090

FEATURES

Motor Crankcase and Ignition/Clutch covers that protect against wear from boots, impacts, dirt, mud, and other debris
Right side: provides protection for the clutch cover, water pump, and lower casing
Left side: provides protection to the ignition cover and clutch actuator

Molded openings to access the filter cover and oil cap
Easy to install by utilizing the original crankcase and ignition/clutch cover bolts
Resistant to high temperatures
Designed not to interfere with boots
Compatible with ACERBIS skid plates

APPLICATIONS

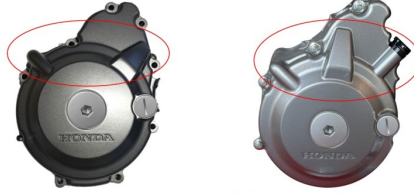
GAS GAS EX 450 F 2021 2022 2023 | HUSQVARNA FC 450 2016 2017 2018 2019 2020 2021 2022 | HUSQVARNA FE 450 2017 2018 2019 2020 2021 2022 2023 | HUSQVARNA FE 501 2019 2020 2021 2022 2023 | HUSQVARNA FE 501 S 2022 2023 | HUSQVARNA FX 450 2020 2021 2022 | KTM EXC-F 450 2017 2018 2019 2020 2021 2022 2023 | KTM EXC-F 500 2017 2018 2019 2020 2021 2022 2023 | KTM SX-F 450 2016 2017 2018 2019 2020 2021 2022 | KTM XC-F 450 2020 2021 2022 | KTM XCF-W 450 2023 | KTM XCF-W 500 2020 2021 2022 2023

SIZES

16 016

X-POWER FOR HONDA
CRF 300L USA
0026461

WARNING: BEFORE PURCHASE, BE SURE TO CHECK WHICH CRANKCASE COVER YOU OWN
ATTENZIONE: PRIMA DI ACQUISTARE CONTROLLARE QUALE CARTER SI POSSIEDE



COD. 0026461 COD. 0025940



0026461.110



0026461.090

FEATURES

WARNING: BEFORE PURCHASE, BE SURE TO CHECK WHICH CRANKCASE COVER YOU OWN

Crankcase and clutch honda cover protection kit crf 300l
Made of sturdy nylon, it adheres perfectly to the original crankcase and protects them from wear, impact, abrasion, mud sand and debris.

Right side: clutch housing and water pump

Left side: crankcase protection
High temperature resistant, numerous air inlets prevent overheating
It is applied with the original screws adhering perfectly to the clutch housing/crankcase.
Mounting kit included
Compatible with acerbis skid plates
Engraved logo
Weight: 300g

PRODUCT DETAILS

98% Nylon | 2% Steel

Made In: Italy

APPLICATIONS

HONDA CRF 250 L (JAPAN) 2021 2022 | HONDA CRF 300 L 2021 2022 2023 2024 | HONDA CRF 300 RALLY 2021 2022 2023 2024

**X-POWER FOR HONDA
TRANSALP**
0026098



0026098.090

FEATURES

Protects against impact, abrasion, mud, sand and debris.
Right side: clutch housing protection
Left side: ignition housing and coolant pump protection
Resistant to high temperatures, numerous air intakes prevent overheating

Can be fitted with the original screws, adhering perfectly to the clutch/ignition housing.
Mounting kit included
Compatible with Acerbis skid plates
Weight 300g

PRODUCT DETAILS

98% Plastic | 2% Metal

Made In: Italy

APPLICATIONS

HONDA TRANSALP XL750 2023 2024

PRODUCTS RELATED

0026174
SKID PLATE FOR HONDA
TRANSALP



X-POWER FOR HONDA
0025940



0025940.090



0025940.110

FEATURES

WARNING: BEFORE PURCHASE, BE SURE TO CHECK WHICH CRANKCASE COVER YOU OWN

Crankcase and clutch honda cover protection kit crf 300l
Made of sturdy nylon, it adheres perfectly to the original crankcase and protects them from wear, impact, abrasion, mud sand and debris.

Right side: clutch housing and water pump

Left side: crankcase protection
High temperature resistant, numerous air inlets prevent overheating
It is applied with the original screws adhering perfectly to the clutch housing/crankcase.
Mounting kit included
Compatible with acerbis skid plates
Engraved logo
Weight: 300g

PRODUCT DETAILS

98% Nylon | 2% Steel

Made In: Italy

APPLICATIONS

HONDA CRF 250 L (JAPAN) 2023 2024 | HONDA CRF 300 L 2021 2022 2023 2024 | HONDA CRF 300 RALLY 2021 2022 2023 2024

X-POWER FOR HONDA
0025028



0025028.090



0025028.110

FEATURES

Engine crankcase coating against wear, shocks, abrasions due to contact with boots, mud, sand and debris
Right side: clutch cover protection, water pump and lower crankcase
Left side: ignition cover and clutch actuator protection
Easy to install: it is applied on the crankcase thanks to the original screws adhering perfectly to the clutch/ignition cover

Resistant to high temperatures
Design studied not to interfere with the boots
Compatible with ACERBIS skid plates

APPLICATIONS

HONDA CRF 250 R 2022 2023 2024 2025 | HONDA CRF 250 RX 2022 2023 2024 2025 | HONDA CRF 250 RX ENDURO 2022 2023 2024 2025 |
HONDA CRF 250 RX ENDURO SPECIAL 2022 2023 2024 2025 | HONDA CRF 300 RX 2022 2023 2024 | HONDA CRF 300 RX ENDURO 2022 2023
2024 2025 | HONDA CRF 300 RX ENDURO SPECIAL 2022 2023 2024 2025

X-POWER FOR HONDA
0024688



0024688.090



0024688.110

FEATURES

Engine crankcase coating against wear, shocks, abrasions due to contact with boots, mud, sand and debris
Right side: clutch cover protection, water pump and lower crankcase
Left side: ignition cover and clutch actuator protection
Easy to install: it is applied on the crankcase thanks to the original screws adhering perfectly to the clutch/ignition cover

Resistant to high temperatures
Design studied not to interfere with the boots
Compatible with ACERBIS skid plates

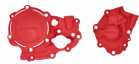
APPLICATIONS

HONDA CRF 450 R 2021 2022 2023 2024 2025 | HONDA CRF 450 R-WE 2025 | HONDA CRF 450 RX 2021 2022 2023 2024 2025

X-POWER FOR HONDA
0024435



0024435.090



0024435.110

FEATURES

Motor Crankcase and Ignition/Clutch covers that protect against wear from boots, impacts, dirt, mud, and other debris
Right side: provides protection for the clutch cover, water pump, and lower casing
Left side: provides protection to the ignition cover and clutch actuator

Molded openings to access the filter cover and oil cap
Easy to install by utilizing the original crankcase and ignition/clutch cover bolts
Resistant to high temperatures
Designed not to interfere with boots
Compatible with ACERBIS skid plates

PRODUCT DETAILS

100% nylon

Made In: Italy

APPLICATIONS

HONDA CRF 250 R 2018 2019 2020 2021 | HONDA CRF 250 RX 2019 2020 2021 | HONDA CRF 300 RX 2019 2020 2021

X-POWER FOR HONDA
0024274



0024274.090



0024274.110

FEATURES

Motor Crankcase and Ignition/Clutch covers that protect against wear from boots, impacts, dirt, mud, and other debris
Right side: provides protection for the clutch cover, water pump, and lower casing
Left side: provides protection to the ignition cover and clutch actuator

Molded openings to access the filter cover and oil cap
Easy to install by utilizing the original crankcase and ignition/clutch cover bolts
Resistant to high temperatures
Designed not to interfere with boots
Compatible with ACERBIS skid plates

APPLICATIONS

HONDA CRF 450 R 2017 2018 2019 2020 | HONDA CRF 450 RX 2019 2020

X-POWER FOR GAS
GAS
0026199



0026199.090

FEATURES

GASGAS MC 250 F 2024 ignition and clutch cover protection kit.
Protects against wear, shock, abrasion, mud sand and debris.
Right side: clutch cover protection, water pump and lower crankcase
Left side: ignition cover protection

Resistant to high temperatures, numerous vents prevent overheating
Mounting kit included, adheres perfectly to clutch/ignition
crankcase.
Compatible with Acerbis skid plates
Weight: 375g

PRODUCT DETAILS

86% Plastic | 12% Steel | 2% Others

Made In: Italy

APPLICATIONS

GAS GAS EX 250 F 2024 2025 | GAS GAS EX 350 F 2024 2025 | GAS GAS MC 250 F 2024 2025 | GAS GAS MC 350 F 2024 2025

X-POWER FOR
GASGAS
0026112



0026112.090



0026112.110

FEATURES

Protects against impacts, abrasion, mud, sand and debris.
Right side: clutch cover protection, water pump and lower crankcase
Left side: ignition cover protection
Resistant to high temperatures, numerous air vents prevent overheating

Mounting kit included, fits perfectly on the clutch/ignition cover.
Compatible with Acerbis skid plates
Weight: 375g

PRODUCT DETAILS

86% Plastic | 12% Steel | 2% Others

Made In: Italy

APPLICATIONS

GAS GAS EC 250 2024 2025 | GAS GAS EC 300 2024 2025 | GAS GAS EX 250 2024 2025 | GAS GAS EX 300 2024 2025 | GAS GAS MC 250 2024 2025

**X-POWER FOR
GASGAS**
0024783



0024783.090

FEATURES

Engine crankcase coating against wear, shocks, abrasions due to contact with boots, mud, sand and debris
Right side: clutch cover protection, water pump and lower crankcase
Left side: ignition cover and clutch actuator protection
Opening on the filter cover and oil cap

Easy to install: it is applied on the crankcase thanks to the original screws adhering perfectly to the clutch/ignition cover
Resistant to high temperatures
Design studied not to interfere with the boots
Compatible with ACERBIS skid plates

APPLICATIONS

GAS GAS MC 450 F 2021 2022 2023

X-POWER FOR GAS
GAS
0024639



0024639.090



0024639.110

FEATURES

Motor Crankcase and Ignition/Clutch covers that protect against wear from boots, impacts, dirt, mud, and other debris
Right side: provides protection for the clutch cover, water pump, and lower casing
Left side: provides protection to the ignition cover and clutch actuator

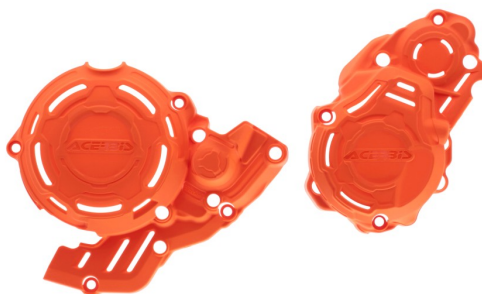
Molded openings to access the filter cover and oil cap
Easy to install by utilizing the original crankcase and ignition/clutch cover bolts
Resistant to high temperatures
Designed not to interfere with boots
Compatible with ACERBIS skid plates

APPLICATIONS

GAS GAS EC 250 2021 2022 2023 | GAS GAS EC 300 2021 2022 2023



X-POWER FOR
KTM/HUSQVARNA
0025986



0025986.011.016



0025986.090



0025986.040

FEATURES

Protects against wear, shock, abrasion, mud sand and debris.
Right side: clutch cover protection, water pump and lower crankcase
Left side: ignition cover protection
Resistant to high temperatures, numerous vents prevent overheating

Mounting kit included, fits perfectly on clutch/ignition cover by taking advantage of the original screws
Compatible with Acerbis skid plates
Weight: 375g

PRODUCT DETAILS

90% Plastic | 6% Steel | 4% Others

Made In: Italy

APPLICATIONS

GAS GAS EC 250 F 2024 2025 | GAS GAS EC 350 F 2024 2025 | HUSQVARNA FE 250 2024 2025 | HUSQVARNA FE 350 2024 2025 | HUSQVARNA FE 350 PRO 2024 | HUSQVARNA FE 350 S 2024 2025 | HUSQVARNA FE 350 W 2024 | KTM EXC-F 250 2024 2025 | KTM EXC-F 350 2024 2025 | KTM XW-F 350 2024 2025

SIZES

16 016

X-POWER / KTM
X-POWER FOR KTM/HUSQVARNA

ACERBI



X-POWER FOR
KTM/HUSQVARNA
0025985



0025985.011.016



0025985.040



0025985.090

FEATURES

Protects against wear, shock, abrasion, mud sand and debris.
Right side: clutch cover protection, water pump and lower crankcase
Left side: ignition cover protection
Resistant to high temperatures, numerous vents prevent overheating

Mounting kit included, fits perfectly on clutch/ignition cover.
Compatible with Acerbis skid plates
Weight: 375g

PRODUCT DETAILS

90% Plastic | 6% Steel | 4% Others

Made In: Italy

APPLICATIONS

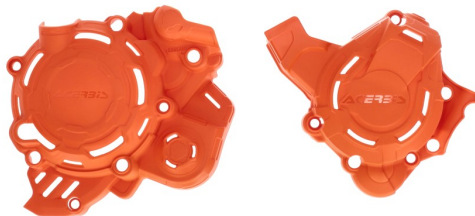
HUSQVARNA TE 250 2024 2025 | HUSQVARNA TE 300 2024 2025 | HUSQVARNA TE 300 PRO 2024 2025 | KTM EXC 250 2024 2025 | KTM EXC 300 2024 2025 | KTM XC-W 250 2024 2025 | KTM XC-W 300 2024 2025

SIZES

16 016



X-POWER FOR
KTM/HUSQVARNA
0025756



0025756.011.016



0025756.040



0025756.090

FEATURES

Protects against wear, shocks, abrasion, mud sand and debris.
Right side: clutch cover protection, water pump and lower crankcase
Left side: ignition cover protection
Durable to high temperatures, numerous air vents prevent overheating

Applies with the original screws adhering perfectly to the clutch crankcase/ignition.
Mounting kit included
Compatible with acerbis sub-engines
Engraved logo
Weight: 350g

PRODUCT DETAILS

98% Nylon | 2% Brass

Made In: Italy

APPLICATIONS

GAS GAS EC 125 2025 | GAS GAS MC 125 2025 | HUSQVARNA TC 125 2023 2024 2025 | HUSQVARNA TC 150 2025 | HUSQVARNA TE 125 2025 | HUSQVARNA TE 150 2024 2025 | KTM EXC 150 2024 2025 | KTM SX 125 2023 2024 2025 | KTM XC 125 2023 2024 2025 | KTM XC-W 125 2025 | KTM XC-W 150 2024 2025

SIZES

16 016

X-POWER / KTM
X-POWER FOR KTM/HUSQVARNA

ACERBI

X-POWER FOR
KTM/HUSQVARNA
0025757



0025757.040



0025757.090



0025757.011.016

FEATURES

Protects against wear, shock, abrasion, mud sand and debris
Right side: clutch cover protection, water pump and lower crankcase
Left side: ignition cover protection and ignition cable
Resistant to high temperatures, numerous vents prevent overheating

Attaches with the original screws adhering perfectly to the clutch/ignition cover
Mounting kit included
Compatible with Acerbis sub-engine covers
Engraved logo
Weight: 350g

PRODUCT DETAILS

96% Nylon | 4% Brass

Made In: Italy

APPLICATIONS

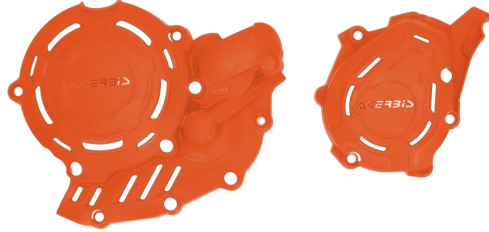
HUSQVARNA TC 250 2023 2024 2025 | HUSQVARNA TX 300 2023 2024 2025 | KTM SX 250 2023 2024 2025 | KTM SX 300 2023 2024 2025 | KTM XC 250 2023 2024 2025 | KTM XC 300 2023 2024 2025

SIZES

16 016



**X-POWER FOR
KTM/HUSQVARNA**
0025442



0025442.011.016



0025442.040



0025442.090

APPLICATIONS

GAS GAS EC 450 F 2024 2025 | GAS GAS EC 500 F 2024 2025 | GAS GAS EX 450 F 2024 2025 | GAS GAS MC 450 F 2024 2025 | HUSQVARNA FC 450 2023 2024 2025 | HUSQVARNA FE 450 2024 2025 | HUSQVARNA FE 501 2025 | HUSQVARNA FE 501 S 2024 2025 | HUSQVARNA FE 501 W 2024 | HUSQVARNA FX 450 2025 | KTM EXC-F 450 2024 2025 | KTM EXC-F 500 2024 2025 | KTM SX-F 450 2023 2024 2025 | KTM XC-F 450 2023 2024 2025 | KTM XCF-W 450 2024 2025 | KTM XW-F 500 2024 2025

SIZES

16 016



X-POWER FOR KTM
0025335



0025335.040



0025335.090



0025335.011.016

FEATURES

Motor Crankcase and Ignition/Clutch covers that protect against wear from boots, impacts, dirt, mud, and other debris
Right side: provides protection for the clutch cover, water pump, and lower casing
Left side: provides protection to the ignition cover and clutch actuator
Easy to install by utilizing the original crankcase and ignition/clutch cover bolts

Resistant to high temperatures
Numerous vents prevent any form of overheating
Designed not to interfere with boots when using brake and clutch in any condition
Compatible with ACERBIS skid plates

PRODUCT DETAILS

Nylon 87% | Steel 8% | Brass 5%

Made In: Italy

APPLICATIONS

HUSQVARNA FC 250 2023 2024 2025 | HUSQVARNA FC 350 2023 2024 2025 | HUSQVARNA FX 350 2023 2024 2025 | KTM SX-F 250 2023 2024 2025 | KTM SX-F 350 2023 2024 2025 | KTM XC-F 250 2023 2024 2025 | KTM XC-F 350 2023 2024 2025

SIZES

16 016

X-POWER / KTM
X-POWER FOR KTM

ACERBI

**X-POWER FOR
KTM/HUSQVARNA**
0023674



0023674.011.016



0023674.030



0023674.090

FEATURES

Motor Crankcase and Ignition/Clutch covers that protect against wear from boots, impacts, dirt, mud, and other debris
Right side: provides protection for the clutch cover, water pump, and lower casing
Left side: provides protection to the ignition cover and clutch actuator

Molded openings to access the filter cover and oil cap
Easy to install by utilizing the original crankcase and ignition/clutch cover bolts
Resistant to high temperatures
Designed not to interfere with boots
Compatible with ACERBIS skid plates

APPLICATIONS

GAS GAS EX 250 2022 2023 | GAS GAS EX 300 2021 2022 2023 | GAS GAS MC 250 2022 2023 | HUSQVARNA TC 250 2019 2020 2021 2022 | HUSQVARNA TE 250i 2020 2021 2022 2023 | HUSQVARNA TE 300i 2020 2021 2022 2023 | HUSQVARNA TX 300 2020 2021 2022 | KTM EXC 250 TPI 2020 2021 2022 2023 | KTM EXC 300 TPI 2020 2021 2022 2023 | KTM SX 250 2019 2020 2021 2022 | KTM XC 250 TPI 2020 2021 2022 | KTM XC 300 TPI 2020 2021 2022 | KTM XC-W 250 TPI 2020 2021 2022 2023 | KTM XC-W 300 TPI 2020 2021 2022 2023

SIZES

16 016

X-POWER FOR
KTM/HUSQVARNA
0023573



0023573.011.016



0023573.030



0023573.090

FEATURES

Motor Crankcase and Ignition/Clutch covers that protect against wear from boots, impacts, dirt, mud, and other debris
Right side: provides protection for the clutch cover, water pump, and lower casing
Left side: provides protection to the ignition cover and clutch actuator

Molded openings to access the filter cover and oil cap
Easy to install by utilizing the original crankcase and ignition/clutch cover bolts
Resistant to high temperatures
Designed not to interfere with boots
Compatible with ACERBIS skid plates

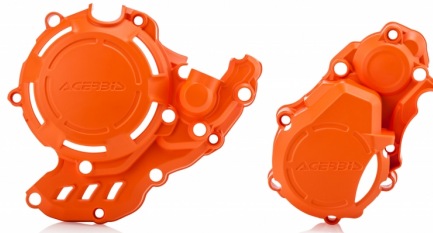
APPLICATIONS

GAS GAS EX 250 F 2021 2022 2023 | GAS GAS EX 350 F 2021 2022 2023 | GAS GAS MC 250 F 2021 2022 2023 | GAS GAS MC 350 F 2022 2023 | HUSQVARNA FC 250 2016 2017 2018 2019 2020 2021 2022 | HUSQVARNA FC 350 2016 2017 2018 2019 2020 2021 2022 | HUSQVARNA FX 350 2020 2021 2022 | KTM SX-F 250 2016 2017 2018 2019 2020 2021 2022 | KTM SX-F 350 2016 2017 2018 2019 2020 2021 2022 | KTM XC-F 250 2020 2021 2022 | KTM XC-F 350 2020 2021 2022

SIZES

16 016

**X-POWER FOR
KTM/HUSQVARNA**
0023469



0023469.011.016



0023469.030



0023469.090

FEATURES

Motor Crankcase and Ignition/Clutch covers that protect against wear from boots, impacts, dirt, mud, and other debris
Right side: provides protection for the clutch cover, water pump, and lower casing
Left side: provides protection to the ignition cover and clutch actuator

Molded openings to access the filter cover and oil cap
Easy to install by utilizing the original crankcase and ignition/clutch cover bolts
Resistant to high temperatures
Designed not to interfere with boots
Compatible with ACERBIS skid plates

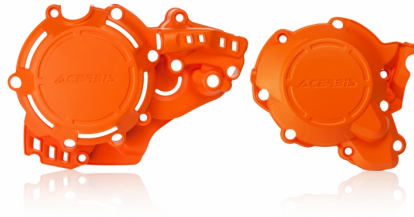
APPLICATIONS

GAS GAS EC 250 F 2021 2022 2023 | GAS GAS EC 350 F 2021 2022 2023 | HUSQVARNA FE 250 2017 2018 2019 2020 2021 2022 2023 | HUSQVARNA FE 350 2017 2018 2019 2020 2021 2022 2023 | HUSQVARNA FE 350 S 2022 2023 | KTM EXC-F 250 2017 2018 2019 2020 2021 2022 2023 | KTM EXC-F 350 2017 2018 2019 2020 2021 2022 2023 | KTM FREERIDE 250 F 2018 2019 2020 | KTM XCF-W 350 2020 2021 2022 2023

SIZES

16 016

X-POWER FOR
KTM/HUSQVARNA
0023468



0023468.011.016



0023468.030



0023468.090

FEATURES

Motor Crankcase and Ignition/Clutch covers that protect against wear from boots, impacts, dirt, mud, and other debris
Right side: provides protection for the clutch cover, water pump, and lower casing
Left side: provides protection to the ignition cover and clutch actuator

Molded openings to access the filter cover and oil cap
Easy to install by utilizing the original crankcase and ignition/clutch cover bolts
Resistant to high temperatures
Designed not to interfere with boots
Compatible with ACERBIS skid plates

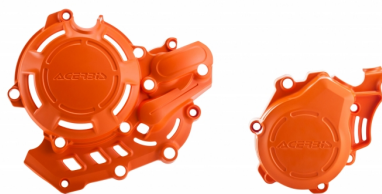
APPLICATIONS

HUSQVARNA TC 250 2017 2018 | HUSQVARNA TE 250 2017 | HUSQVARNA TE 250I 2018 2019 | HUSQVARNA TE 300 2017 | HUSQVARNA TE 300I 2018 2019 | KTM EXC 250 2017 | KTM EXC 250 TPI 2018 2019 | KTM EXC 300 2017 | KTM EXC 300 TPI 2018 2019 | KTM SX 250 2017 2018

SIZES

16 016

**X-POWER FOR
KTM/HUSQVARNA**
0023153



0023153.011.016



0023153.020



0023153.061



0023153.090

FEATURES

Motor Crankcase and Ignition/Clutch covers that protect against wear from boots, impacts, dirt, mud, and other debris
Right side: provides protection for the clutch cover, water pump, and lower casing
Left side: provides protection to the ignition cover and clutch actuator

Molded openings to access the filter cover and oil cap
Easy to install by utilizing the original crankcase and ignition/clutch cover bolts
Resistant to high temperatures
Designed not to interfere with boots
Compatible with ACERBIS skid plates

APPLICATIONS

GAS GAS EX 450 F 2021 2022 2023 | HUSQVARNA FC 450 2016 2017 2018 2019 2020 2021 2022 | HUSQVARNA FE 450 2017 2018 2019 2020 2021 2022 2023 | HUSQVARNA FE 501 2019 2020 2021 2022 2023 | HUSQVARNA FE 501 S 2022 2023 | HUSQVARNA FX 450 2020 2021 2022 | KTM EXC-F 450 2017 2018 2019 2020 2021 2022 2023 | KTM EXC-F 500 2017 2018 2019 2020 2021 2022 2023 | KTM SX-F 450 2016 2017 2018 2019 2020 2021 2022 | KTM XC-F 450 2020 2021 2022 | KTM XCF-W 450 2023 | KTM XCF-W 500 2020 2021 2022 2023

SIZES

16 016

**X-POWER FOR
YAMAHA**
0026612



0026612.090



0026612.040

FEATURES

Ignition crankcase and clutch crankcase protection kit
Protects against wear, impact, abrasion, mud, sand and debris.
Right side: clutch crankcase protection, water pump and lower crankcase
Left side: ignition crankcase protection
Resistant to high temperatures, numerous air vents prevent overheating

Applies with the original screws adhering perfectly to the clutch crankcase/ignition crankcase.
Mounting kit included
Compatible with Acerbis skid plates
Engraved logo

APPLICATIONS

YAMAHA WR 250 F 2025 | YAMAHA YZ 250 F 2025 | YAMAHA YZ 250 FX 2025



X-POWER FOR
YAMAHA
0025884



0025884.040



0025884.090

FEATURES

Ignition crankcase and clutch crankcase protection kit
Protects against wear, impact, abrasion, mud, sand and debris.
Right side: clutch crankcase protection, water pump and lower crankcase
Left side: ignition crankcase protection
Resistant to high temperatures, numerous air vents prevent overheating

Applies with the original screws adhering perfectly to the clutch crankcase/ignition crankcase.
Mounting kit included
Compatible with Acerbis skid plates
Engraved logo
Weight: 370g

PRODUCT DETAILS

98% Nylon | 2% Brass

Made In: Italy

APPLICATIONS

FANTIC XXF 450 2024 2025 | YAMAHA WR 450 F 2024 2025 | YAMAHA YZ 450 F 2023 2024 2025 | YAMAHA YZ 450 FX 2023 2024 2025

X-POWER YAMAHA
FOR TENERE 700
0025138



0025138.090

FEATURES

Motor Crankcase and Ignition/Clutch covers that protect against wear from boots, impacts, dirt, mud, and other debris
Right side: provides protection for the clutch cover, water pump, and lower casing
Left side: provides protection to the ignition cover and clutch actuator
Easy to install by utilizing the original crankcase and ignition/clutch cover bolts

Resistant to high temperatures
Numerous vents prevent any form of overheating
Designed not to interfere with boots when using brake and clutch in any condition
Compatible with ACERBIS skid plates

PRODUCT DETAILS

Nylon 96% | Others 4%

Made In: Italy

APPLICATIONS

YAMAHA MT-07 2014 2015 2016 2017 2018 2019 2020 2021 2022 2023 | YAMAHA TENERE 700 2019 2020 2021 2022 2023 2024 | YAMAHA TENERE 700 EXPLORE EDITIO 2023 | YAMAHA TENERE 700 EXTREME EDITIO 2023 2024 | YAMAHA TENERE 700 RALLY EDITION 2020 2021 2022 2023 | YAMAHA TENERE 700 WORLD RAID 2022 2023 2024 | YAMAHA TENERE 700 WORLD RALLY 2023 2024 | YAMAHA TRACER 7 2020 2021 2022 | YAMAHA XSR 700 2021 2022 2023 | YAMAHA XSR 700 LEGACY 2023 | YAMAHA XSR 700 XTRIBUTE 2020 2021 2022 2023

PRODUCTS RELATED



0024743
FUEL TANKS FOR TENERE 700
23L

- 090.700 ■ 110.700
- 120.700



0025193
SKID PLATE FOR TENERE 700

- 090



0024666
X-GRIP FRAME PROTECTOR
FOR YAMAHA

- 090 ■ 314
- 316 ■ 323



0025145
TEKETMAGNET SWING ARM
FOR TENERE 700

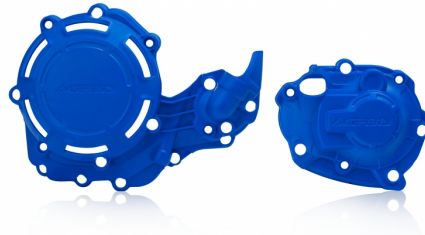
- 090



0024989
HANDGUARDS ARGON YAM
TT700/T900

- 030 ■ 090
- 209 ■ 237
- 251 ■ 293
- 349

X-POWER FOR
YAMAHA
0024024



0024024.040



0024024.090

FEATURES

Motor Crankcase and Ignition/Clutch covers that protect against wear from boots, impacts, dirt, mud, and other debris

Right side: provides protection for the clutch cover, water pump, and lower casing

Left side: provides protection to the ignition cover and clutch actuator

Molded openings to access the filter cover and oil cap

Easy to install by utilizing the original crankcase and ignition/clutch cover bolts

Resistant to high temperatures

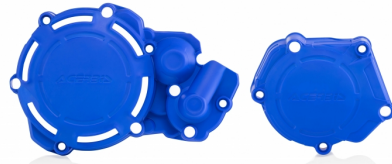
Designed not to interfere with boots

Compatible with ACERBIS skid plates

APPLICATIONS

FANTIC XEF 450 2021 2022 2023 2024 2025 | YAMAHA YZ 450 F 2018 2019 2020 2021 2022 | YAMAHA YZ 450 FX 2019 2020 2021 2022

X-POWER FOR
YAMAHA
0023962



0023962.040



0023962.090

FEATURES

Motor Crankcase and Ignition/Clutch covers that protect against wear from boots, impacts, dirt, mud, and other debris

Right side: provides protection for the clutch cover, water pump, and lower casing

Left side: provides protection to the ignition cover and clutch actuator

Molded openings to access the filter cover and oil cap

Easy to install by utilizing the original crankcase and ignition/clutch cover bolts

Resistant to high temperatures

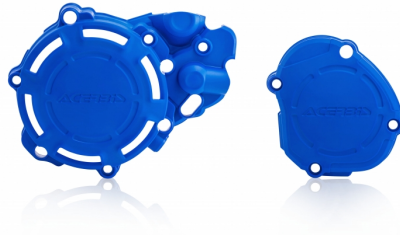
Designed not to interfere with boots

Compatible with ACERBIS skid plates

APPLICATIONS

FANTIC XX 250 2021 2022 2023 2024 2025 | YAMAHA YZ 250 2005 2006 2007 2008 2009 2010 2011 2012 2013 2014 2015 2016 2017 2018 2019 2020 2021 2022 2023 2024 2025

X-POWER FOR
YAMAHA
0023961



0023961.040



0023961.090

FEATURES

Motor Crankcase and Ignition/Clutch covers that protect against wear from boots, impacts, dirt, mud, and other debris

Right side: provides protection for the clutch cover, water pump, and lower casing

Left side: provides protection to the ignition cover and clutch actuator

Molded openings to access the filter cover and oil cap

Easy to install by utilizing the original crankcase and ignition/clutch cover bolts

Resistant to high temperatures

Designed not to interfere with boots

Compatible with ACERBIS skid plates

APPLICATIONS

FANTIC XE 125 2021 2022 2023 2024 2025 | FANTIC XX 125 2021 2022 2023 2024 2025 | YAMAHA YZ 125 2005 2006 2007 2008 2009 2010 2011 2012 2013 2014 2015 2016 2017 2018 2019 2020 2021 2022 2023 2024 2025

X-POWER FOR BETA
0023763



0023763.090



0023763.110

FEATURES

Motor Crankcase and Ignition/Clutch covers that protect against wear from boots, impacts, dirt, mud, and other debris
Right side: provides protection for the clutch cover, water pump, and lower casing
Left side: provides protection to the ignition cover and clutch actuator

Molded openings to access the filter cover and oil cap
Easy to install by utilizing the original crankcase and ignition/clutch cover bolts
Resistant to high temperatures
Designed not to interfere with boots
Compatible with ACERBIS skid plates

APPLICATIONS

BETA RR 250 2T 2018 2019 2020 2021 2022 2023 2024 | BETA RR 250 2T RACING 2020 2021 2022 2023 2024 2025 | BETA RR 300 2T 2018 2019 2020 2021 2022 2023 2024 | BETA RR 300 2T RACING 2020 2021 2022 2023 2024 2025 | BETA RR X-PRO 300 2T 2025 | BETA XTRAINER 250 2018 2019 2020 2021 2022 2023 2024 2025 | BETA XTRAINER 300 2018 2019 2020 2021 2022 2023 2024 2025



X-POWER FOR
APRILIA
0025717



0025717.090

FEATURES

Protects against wear, shock, abrasion, mud sand and debris.
Right side: clutch cover protection
Left side: ignition cover protection, water pump and lower crankcase
Resistant to high temperatures, numerous air vents prevent overheating

Applies with the original screws adhering perfectly to the clutch/ignition cover.
Mounting kit included
Compatible with the original sub-engine
Engraved logo
Weight: 470 gr

PRODUCT DETAILS

98% nylon | 2% steel

Made In: Italy

APPLICATIONS

APRILIA TUAREG 660 2022 2023 2024

X-POWER FOR SUZUKI
0026007



0026007.090

FEATURES

Right side: clutch crankcase and water pump protection
Left side: ignition crankcase protection
Resistant to high temperatures, the numerous air intakes prevent overheating

Applies with the original screws adhering perfectly to the clutch/ignition crankcase.
Mounting kit included
Compatible with Acerbis skid plates
Engraved logo

PRODUCT DETAILS

98% plastic | 2% metal

Made In: Italy

APPLICATIONS

SUZUKI DRZ 400 2000 2001 2002 2003 2004 2005 2006 2007 2008 2009 2010 2011 2012 2013 2014 2015 2016 2017 2018 2019 2020 2021 2022 2023 | SUZUKI DRZ 400 SM 2000 2001 2002 2003 2004 2005 2006 2007 2008 2009 2010 2011 2012 2013 2014 2015 2016 2017 2018 2019 2020 2021 2022 2023 | SUZUKI DRZ 400E 2000 2001 2002 2003 2004 2005 2006 2007 2008 2009 2010 2011 2012 2013 2014 2015 2016 2017 2018 2019 2020 2021 2022 2023 | SUZUKI DRZ 400S 2000 2001 2002 2003 2004 2005 2006 2007 2008 2009 2010 2011 2012 2013 2014 2015 2016 2017 2018 2019 2020 2021 2022 2023

**X-POWER FOR ROYAL
ENFIELD**
0026694



0026694.090

FEATURES

Protects against shock, abrasion, mud sand and debris.
Right side: clutch crankcase, water pump and lower crankcase protection
Left side: ignition crankcase protection
Resistant to high temperatures, numerous vents prevent overheating

Applies with the original screws adhering perfectly to the clutch/ignition crankcase.
Compatible with Acerbis skid plates
Weight: 555g

PRODUCT DETAILS

98% Plastic | 2% Other

Made In: Italy

APPLICATIONS

ROYAL ENFIELD HIMALAYAN 450 2024