

X-POWER FOR  
KTM/HUSQVARNA  
0025986



0025986.011.016



0025986.090



0025986.040

FEATURES

Protects against wear, shock, abrasion, mud sand and debris.  
Right side: clutch cover protection, water pump and lower crankcase  
Left side: ignition cover protection  
Resistant to high temperatures, numerous vents prevent overheating

Mounting kit included, fits perfectly on clutch/ignition cover by taking advantage of the original screws  
Compatible with Acerbis skid plates  
Weight: 375g

PRODUCT DETAILS

90% Plastic | 6% Steel | 4% Others

Made In: Italy

APPLICATIONS

GAS GAS EC 250 F 2024 | GAS GAS EC 350 F 2024 | HUSQVARNA FE 250 2024 | HUSQVARNA FE 350 2024 | HUSQVARNA FE 350 PRO 2024 | HUSQVARNA FE 350 S 2024 | HUSQVARNA FE 350 W 2024 | KTM EXC-F 250 2024 | KTM EXC-F 350 2024 | KTM XW-F 350 2024

SIZES

16 016

X-POWER FOR  
KTM/HUSQVARNA  
0025985



0025985.011.016



0025985.040



0025985.090

FEATURES

Protects against wear, shock, abrasion, mud sand and debris.  
Right side: clutch cover protection, water pump and lower crankcase  
Left side: ignition cover protection  
Resistant to high temperatures, numerous vents prevent overheating

Mounting kit included, fits perfectly on clutch/ignition cover.  
Compatible with Acerbis skid plates  
Weight: 375g

PRODUCT DETAILS

90% Plastic | 6% Steel | 4% Others

Made In: Italy

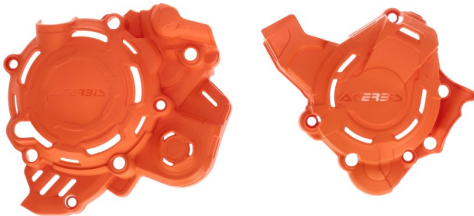
APPLICATIONS

HUSQVARNA TE 250 2024 | HUSQVARNA TE 300 2024 | HUSQVARNA TE 300 PRO 2024 | KTM EXC 250 2024 | KTM EXC 300 2024 | KTM XC-W 250 2024 | KTM XC-W 300 2024

SIZES

16 016

X-POWER FOR  
KTM/HUSQVARNA  
0025756



0025756.011.016



0025756.040



0025756.090

FEATURES

Protects against wear, shocks, abrasion, mud sand and debris. Right side: clutch cover protection, water pump and lower crankcase Left side: ignition cover protection Durable to high temperatures, numerous air vents prevent overheating	Applies with the original screws adhering perfectly to the clutch crankcase/ignition. Mounting kit included Compatible with acerbis sub-engines Engraved logo Weight: 350g
--	--

PRODUCT DETAILS

98% Nylon | 2% Brass

Made In: Italy

APPLICATIONS

HUSQVARNA TC 125 2023 2024 | HUSQVARNA TE 150 2024 | KTM EXC 150 2024 | KTM SX 125 2023 2024 | KTM XC 125 2023 2024 | KTM XC-W 150 2024

SIZES

16 016

X-POWER FOR  
KTM/HUSQVARNA  
0025757



0025757.040



0025757.090



0025757.011.016

FEATURES

Protects against wear, shock, abrasion, mud sand and debris  
Right side: clutch cover protection, water pump and lower crankcase  
Left side: ignition cover protection and ignition cable  
Resistant to high temperatures, numerous vents prevent overheating

Attaches with the original screws adhering perfectly to the clutch/ignition cover  
Mounting kit included  
Compatible with Acerbis sub-engine covers  
Engraved logo  
Weight: 350g

PRODUCT DETAILS

96% Nylon | 4% Brass

Made In: Italy

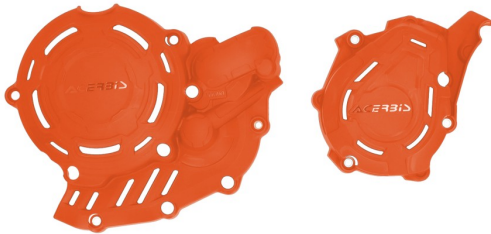
APPLICATIONS

HUSQVARNA TC 250 2023 2024 | HUSQVARNA TX 300 2023 2024 | KTM SX 250 2023 2024 | KTM SX 300 2023 2024 | KTM XC 250 2023 2024  
| KTM XC 300 2023 2024

SIZES

16 016

X-POWER FOR  
KTM/HUSQVARNA  
0025442



0025442.011.016



0025442.040



0025442.090

APPLICATIONS

GAS GAS EC 450 F 2024 | GAS GAS EC 500 F 2024 | GAS GAS EX 450 F 2024 | GAS GAS MC 450 F 2024 | HUSQVARNA FC 450 2023 2024 | HUSQVARNA FE 450 2024 | HUSQVARNA FE 501 2024 | HUSQVARNA FE 501 S 2024 | HUSQVARNA FE 501 W 2024 | KTM EXC-F 450 2024 | KTM EXC-F 500 2024 | KTM SX-F 450 2023 2024 | KTM XC-F 450 2023 2024 | KTM XCF-W 450 2024 | KTM XW-F 500 2024

SIZES

16 016



X-POWER FOR KTM  
0025335



0025335.040



0025335.090



0025335.011.016

FEATURES

Motor Crankcase and Ignition/Clutch covers that protect against wear from boots, impacts, dirt, mud, and other debris  
Right side: provides protection for the clutch cover, water pump, and lower casing  
Left side: provides protection to the ignition cover and clutch actuator  
Easy to install by utilizing the original crankcase and ignition/clutch cover bolts

Resistant to high temperatures  
Numerous vents prevent any form of overheating  
Designed not to interfere with boots when using brake and clutch in any condition  
Compatible with ACERBIS skid plates

PRODUCT DETAILS

Nylon 87% | Steel 8% | Brass 5%

Made In: Italy

APPLICATIONS

HUSQVARNA FC 250 2023 2024 | HUSQVARNA FC 350 2023 2024 | HUSQVARNA FX 350 2023 2024 | KTM SX-F 250 2023 2024 | KTM SX-F 350 2023 2024 | KTM XC-F 250 2023 2024 | KTM XC-F 350 2023 2024

SIZES

16 016

X-POWER / KTM  
X-POWER FOR KTM



X-POWER FOR  
KTM/HUSQVARNA  
0023674



0023674.011.016



0023674.030



0023674.090

FEATURES

Motor Crankcase and Ignition/Clutch covers that protect against wear from boots, impacts, dirt, mud, and other debris  
Right side: provides protection for the clutch cover, water pump, and lower casing  
Left side: provides protection to the ignition cover and clutch actuator

Molded openings to access the filter cover and oil cap  
Easy to install by utilizing the original crankcase and ignition/clutch cover bolts  
Resistant to high temperatures  
Designed not to interfere with boots  
Compatible with ACERBIS skid plates

APPLICATIONS

GAS GAS EX 250 2022 2023 | GAS GAS EX 300 2021 2022 2023 | GAS GAS MC 250 2022 2023 | HUSQVARNA TC 250 2019 2020 2021 2022 | HUSQVARNA TE 250i 2020 2021 2022 2023 | HUSQVARNA TE 300i 2020 2021 2022 2023 | HUSQVARNA TX 300 2020 2021 2022 | KTM EXC 250 TPI 2020 2021 2022 2023 | KTM EXC 300 TPI 2020 2021 2022 2023 | KTM SX 250 2019 2020 2021 2022 | KTM XC 250 TPI 2020 2021 2022 | KTM XC 300 TPI 2020 2021 2022 | KTM XC-W 250 TPI 2020 2021 2022 2023 | KTM XC-W 300 TPI 2020 2021 2022 2023

SIZES

16 016



X-POWER FOR  
KTM/HUSQVARNA  
0023573



0023573.110



0023573.011.016



0023573.030



0023573.090

FEATURES

Motor Crankcase and Ignition/Clutch covers that protect against wear from boots, impacts, dirt, mud, and other debris  
Right side: provides protection for the clutch cover, water pump, and lower casing  
Left side: provides protection to the ignition cover and clutch actuator

Molded openings to access the filter cover and oil cap  
Easy to install by utilizing the original crankcase and ignition/clutch cover bolts  
Resistant to high temperatures  
Designed not to interfere with boots  
Compatible with ACERBIS skid plates

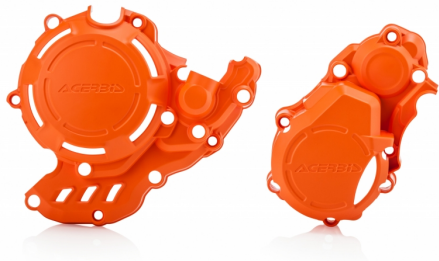
APPLICATIONS

GAS GAS EX 250 F 2021 2022 2023 | GAS GAS EX 350 F 2021 2022 2023 | GAS GAS MC 250 F 2021 2022 2023 | GAS GAS MC 350 F 2022 2023 | HUSQVARNA FC 250 2016 2017 2018 2019 2020 2021 2022 | HUSQVARNA FC 350 2016 2017 2018 2019 2020 2021 2022 | HUSQVARNA FX 350 2020 2021 2022 | KTM SX-F 250 2016 2017 2018 2019 2020 2021 2022 | KTM SX-F 350 2016 2017 2018 2019 2020 2021 2022 | KTM XC-F 250 2020 2021 2022 | KTM XC-F 350 2020 2021 2022

SIZES

16 016

X-POWER FOR  
KTM/HUSQVARNA  
0023469



0023469.011.016



0023469.030



0023469.090

FEATURES

Motor Crankcase and Ignition/Clutch covers that protect against wear from boots, impacts, dirt, mud, and other debris  
Right side: provides protection for the clutch cover, water pump, and lower casing  
Left side: provides protection to the ignition cover and clutch actuator

Molded openings to access the filter cover and oil cap  
Easy to install by utilizing the original crankcase and ignition/clutch cover bolts  
Resistant to high temperatures  
Designed not to interfere with boots  
Compatible with ACERBIS skid plates

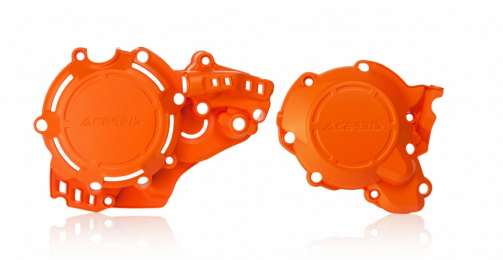
APPLICATIONS

GAS GAS EC 250 F 2021 2022 2023 | GAS GAS EC 350 F 2021 2022 2023 | HUSQVARNA FE 250 2017 2018 2019 2020 2021 2022 2023 | HUSQVARNA FE 350 2017 2018 2019 2020 2021 2022 2023 | HUSQVARNA FE 350 S 2022 2023 | KTM EXC-F 250 2017 2018 2019 2020 2021 2022 2023 | KTM EXC-F 350 2017 2018 2019 2020 2021 2022 2023 | KTM FREERIDE 250 F 2018 2019 2020 | KTM FREERIDE 350 2012 2013 2014 2015 2016 2017 | KTM XCF-W 350 2020 2021 2022 2023

SIZES

16 016

X-POWER FOR  
KTM/HUSQVARNA  
0023468



0023468.011.016



0023468.030



0023468.090

FEATURES

Motor Crankcase and Ignition/Clutch covers that protect against wear from boots, impacts, dirt, mud, and other debris	Molded openings to access the filter cover and oil cap
Right side: provides protection for the clutch cover, water pump, and lower casing	Easy to install by utilizing the original crankcase and ignition/clutch cover bolts
Left side: provides protection to the ignition cover and clutch actuator	Resistant to high temperatures
	Designed not to interfere with boots
	Compatible with ACERBIS skid plates

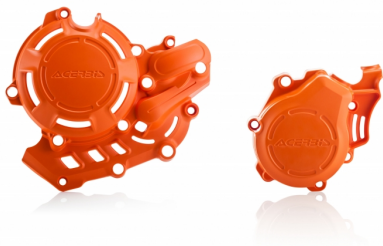
APPLICATIONS

HUSQVARNA TC 250 2017 2018 | HUSQVARNA TE 250 2017 | HUSQVARNA TE 250I 2018 2019 | HUSQVARNA TE 300 2017 | HUSQVARNA TE 300I 2018 2019 | KTM EXC 250 2017 | KTM EXC 250 TPI 2018 2019 | KTM EXC 300 2017 | KTM EXC 300 TPI 2018 2019 | KTM SX 250 2017 2018

SIZES

16 016

X-POWER FOR  
KTM/HUSQVARNA  
0023153



0023153.011.016



0023153.020



0023153.061



0023153.090

FEATURES

Motor Crankcase and Ignition/Clutch covers that protect against wear from boots, impacts, dirt, mud, and other debris  
Right side: provides protection for the clutch cover, water pump, and lower casing  
Left side: provides protection to the ignition cover and clutch actuator

Molded openings to access the filter cover and oil cap  
Easy to install by utilizing the original crankcase and ignition/clutch cover bolts  
Resistant to high temperatures  
Designed not to interfere with boots  
Compatible with ACERBIS skid plates

APPLICATIONS

GAS GAS EX 450 F 2021 2022 2023 | HUSQVARNA FC 450 2016 2017 2018 2019 2020 2021 2022 | HUSQVARNA FE 450 2017 2018 2019 2020 2021 2022 2023 | HUSQVARNA FE 501 2019 2020 2021 2022 2023 | HUSQVARNA FE 501 S 2022 2023 | HUSQVARNA FX 450 2020 2021 2022 | KTM EXC-F 450 2017 2018 2019 2020 2021 2022 2023 | KTM EXC-F 500 2017 2018 2019 2020 2021 2022 2023 | KTM SX-F 450 2016 2017 2018 2019 2020 2021 2022 | KTM XC-F 450 2020 2021 2022 | KTM XCF-W 450 2023 | KTM XCF-W 500 2020 2021 2022 2023

SIZES

16 016