

PLASTIC KIT
0025507



0025507.011.016



0025507.030



0025507.090



0025507.110



0025507.203



0025507.553.016



0025507.553.017



0025507.553.019



0025507.553.023

APPLICATIONS

GAS GAS MC 50 2021 2022 2023 | GAS GAS MC-E 5 2021 2022 2023 2024 | KTM SX 50 2016 2017 2018 2019 2020 2021 2022 2023 | KTM SX-E 3 2023 2024 | KTM SX-E 5 2020 2021 2022 2023 2024

PLASTIC KIT
0024630



0024630.090



0024630.237



0024630.072



0024630.092



0024630.132



0024630.343



0024630.349



0024630.553

APPLICATIONS

GAS GAS EX 250 2022 2023 | GAS GAS EX 250 F 2021 2022 2023 | GAS GAS EX 300 2021 2022 2023 | GAS GAS EX 350 F 2021 2022 2023 |
GAS GAS EX 450 F 2021 2022 2023 | GAS GAS MC 125 2021 2022 2023 | GAS GAS MC 250 2022 2023 | GAS GAS MC 250 F 2021 2022 2023 |
GAS GAS MC 350 F 2022 2023 | GAS GAS MC 450 F 2021 2022 2023

**PLASTIC KIT
0024632**



0024632.090



0024632.110



0024632.237



0024632.349



0024632.553

APPLICATIONS

GAS GAS EC 250 2021 2022 2023 | GAS GAS EC 250 F 2021 2022 2023 | GAS GAS EC 300 2021 2022 2023 | GAS GAS EC 350 F 2021 2022 2023

PLASTIC KIT
0022932



0022932.011.016



0022932.553.023



0022932.072



0022932.092



0022932.132



0022932.030



0022932.031



0022932.090



0022932.110



0022932.553



0022932.553.019



0022932.553.020



0022932.553.021

APPLICATIONS

GAS GAS MC 85 2021 2022 2023 2024 | KTM SX 85 2018 2019 2020 2021 2022 2023 2024

PLASTIC KIT
0021816



0021816.011.016



0021816.553.023



0021816.030



0021816.031



0021816.090



0021816.110



0021816.204



0021816.553.016



0021816.553.017



0021816.553.018



0021816.553.019



0021816.553.020



0021816.553.021

APPLICATIONS

GAS GAS MC 65 2021 2022 2023 | KTM SX 65 2016 2017 2018 2019 2020 2021 2022 2023

FULL PLASTIC KIT FOR
KTM
0025506



0025506.011.016



0025506.030



0025506.090



0025506.110



0025506.203



0025506.553.016



0025506.553.017



0025506.553.019



0025506.553.021



0025506.553.023

APPLICATIONS

GAS GAS MC 50 2021 2022 2023 | GAS GAS MC-E 5 2021 2022 2023 2024 | KTM SX 50 2016 2017 2018 2019 2020 2021 2022 2023 | KTM SX-E 3 2023 2024 | KTM SX-E 5 2020 2021 2022 2023 2024

**FULL PLASTIC KIT FOR
GAS GAS
0024631**



0024631.090



0024631.237



0024631.072



0024631.092



0024631.132



0024631.343



0024631.349



0024631.553

APPLICATIONS

GAS GAS EX 250 2022 2023 | GAS GAS EX 250 F 2021 2022 2023 | GAS GAS EX 300 2021 2022 2023 | GAS GAS EX 350 F 2021 2022 2023 |
GAS GAS EX 450 F 2021 2022 2023 | GAS GAS MC 125 2021 2022 2023 | GAS GAS MC 250 2022 2023 | GAS GAS MC 250 F 2021 2022 2023 |
GAS GAS MC 350 F 2022 2023 | GAS GAS MC 450 F 2021 2022 2023

PRODUCTS RELATED



0021833
ACERBIS CHAIN GUIDE/SLIDER
KIT FOR KTM/HUSQVARNA/GAS
GAS

010 090



0021752
AIR FILTER FOR KTM



0024328
X-FUTURE DISC COVER

010 011.016
030 040
060 061
090 110
111 130

GAS GAS / FULL PLASTIC KITS
FULL PLASTIC KIT FOR GAS GAS

ACERBIS



0025020
BLACK MOUNTING KIT
X-BRAKE KTM 16

**FULL PLASTIC KIT FOR
GAS GAS**
0024633



0024633.090



0024633.110



0024633.237



0024633.349



0024633.553

APPLICATIONS

GAS GAS EC 250 2021 2022 2023 | GAS GAS EC 250 F 2021 2022 2023 | GAS GAS EC 300 2021 2022 2023 | GAS GAS EC 350 F 2021 2022 2023

FULL PLASTIC KIT FOR
KTM
0022933



0022933.011.016



0022933.072



0022933.092



0022933.132



0022933.553.023



0022933.030



0022933.031



0022933.090



0022933.110



0022933.553



0022933.553.019



0022933.553.020



0022933.553.021

APPLICATIONS

GAS GAS MC 85 2021 2022 2023 2024 | KTM SX 85 2018 2019 2020 2021 2022 2023 2024

PRODUCTS RELATED



0025789
REPLICA CHAIN GUIDE

■ 090



0022264
X-BRAKE 2.0 245 MM DISC
COVER

▣ 203 ▣ 245
▣ 313 ▣ 315



0025025
BLACK MOUNTING KIT
X-BRAKE KTM 85



0026207
NET AIR FILTER FOR
KTM/HUSQVARNA/GAS GAS

□ 030



0021515
ACERBIS CHAIN GUIDE/SLIDER
KIT FOR KTM/HUSQVARNA/GAS
GAS

■ 010 ■ 090



0024489
X-ELITE HANDGUARDS

□ 030 ■ 090
▣ 209 ▣ 237
▣ 245 ▣ 313
▣ 315 ▣ 318
▣ 850

FULL PLASTIC KIT FOR
KTM
0023593



0023593.011.016



0023593.553.023



0023593.030



0023593.031



0023593.090



0023593.110



0023593.204



0023593.553



0023593.553.020



0023593.553.021

APPLICATIONS

GAS GAS MC 65 2021 2022 2023 | KTM SX 65 2019 2020 2021 2022 2023



FRONT NUMBER
PLATE
0025512



0025512.011.016



0025512.030



0025512.110



0025512.090

APPLICATIONS

GAS GAS MC 50 2021 2022 2023 | GAS GAS MC-E 5 2021 2022 2023 2024 | KTM SX 50 2016 2017 2018 2019 2020 2021 2022 2023 | KTM SX-E 3 2023 2024 | KTM SX-E 5 2020 2021 2022 2023 2024

**FRONT NUMBER
PLATE**
0024628



0024628.030



0024628.072



0024628.092



0024628.132



0024628.090



0024628.110

APPLICATIONS

GAS GAS EX 250 2022 2023 | GAS GAS EX 250 F 2021 2022 2023 | GAS GAS EX 300 2021 2022 2023 | GAS GAS EX 350 F 2021 2022 2023 |
GAS GAS EX 450 F 2021 2022 2023 | GAS GAS MC 125 2021 2022 2023 | GAS GAS MC 250 2022 2023 | GAS GAS MC 250 F 2021 2022 2023 |
GAS GAS MC 350 F 2022 2023 | GAS GAS MC 450 F 2021 2022 2023

FRONT NUMBER
PLATE
0022927



0022927.011.016



0022927.014



0022927.072



0022927.132



0022927.092



0022927.030



0022927.031



0022927.090



0022927.110

FEATURES

KTM SX 85 2018

APPLICATIONS

GAS GAS MC 85 2021 2022 2023 2024 | KTM SX 85 2018 2019 2020 2021 2022 2023 2024

FRONT NUMBER
PLATE
0021815



0021815.011.016



0021815.014



0021815.030



0021815.031



0021815.090



0021815.110

APPLICATIONS

GAS GAS MC 65 2021 2022 2023 | KTM SX 65 2016 2017 2018 2019 2020 2021 2022 2023



FRONT FENDER
0025510



0025510.011.016



0025510.030



0025510.090



0025510.110

APPLICATIONS

GAS GAS MC 50 2021 2022 2023 | GAS GAS MC-E 5 2021 2022 2023 2024 | KTM SX 50 2024 2025 | KTM SX-E 3 2025 | KTM SX-E 5 2025

FRONT FENDER
0024622



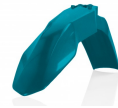
0024622.030



0024622.072



0024622.092



0024622.132



0024622.090



0024622.110

APPLICATIONS

GAS GAS EC 250 2021 2022 2023 | GAS GAS EC 250 F 2021 2022 2023 | GAS GAS EC 300 2021 2022 2023 | GAS GAS EC 350 F 2021 2022 2023 | GAS GAS EX 250 2022 2023 | GAS GAS EX 250 F 2021 2022 2023 | GAS GAS EX 300 2021 2022 2023 | GAS GAS EX 350 F 2021 2022 2023 | GAS GAS EX 450 F 2021 2022 2023 | GAS GAS MC 125 2021 2022 2023 | GAS GAS MC 250 2022 2023 | GAS GAS MC 250 F 2021 2022 2023 | GAS GAS MC 350 F 2022 2023 | GAS GAS MC 450 F 2021 2022 2023

FRONT FENDER
0022900



0022900.011.016



0022900.014



0022900.072



0022900.132



0022900.092



0022900.030



0022900.031



0022900.090



0022900.110

APPLICATIONS

GAS GAS MC 85 2021 2022 2023 2024 | KTM SX 85 2018 2019 2020 2021 2022 2023 2024 2025

FRONT FENDER
0021812



0021812.011.016



0021812.030



0021812.031



0021812.090



0021812.110

FEATURES

All Acerbis replica plastic has the original factory shape of the OEM plastic of each specific model

APPLICATIONS

GAS GAS MC 65 2021 2022 2023 | KTM SX 65 2016 2017 2018 2019 2020 2021 2022 2023 2024 2025



RADIATOR SCOOPS
0025511



0025511.011.016



0025511.030



0025511.090



0025511.110



0025511.209



0025511.229



0025511.237

APPLICATIONS

GAS GAS MC 50 2021 2022 2023 | GAS GAS MC-E 5 2021 2022 2023 2024 | KTM SX 50 2016 2017 2018 2019 2020 2021 2022 2023 | KTM SX-E 3 2023 2024 | KTM SX-E 5 2020 2021 2022 2023 2024

**RADIATOR SCOOPS
0024625**



0024625.030



0024625.072



0024625.092



0024625.132



0024625.090



0024625.110

APPLICATIONS

GAS GAS EC 250 2021 2022 2023 | GAS GAS EC 250 F 2021 2022 2023 | GAS GAS EC 300 2021 2022 2023 | GAS GAS EC 350 F 2021 2022 2023 | GAS GAS EX 250 2022 2023 | GAS GAS EX 250 F 2021 2022 2023 | GAS GAS EX 300 2021 2022 2023 | GAS GAS EX 350 F 2021 2022 2023 | GAS GAS EX 450 F 2021 2022 2023 | GAS GAS MC 125 2021 2022 2023 | GAS GAS MC 250 2022 2023 | GAS GAS MC 250 F 2021 2022 2023 | GAS GAS MC 350 F 2022 2023 | GAS GAS MC 450 F 2021 2022 2023

RADIATOR SCOOPS
0022928



0022928.011.016



0022928.072



0022928.092



0022928.132



0022928.030



0022928.031



0022928.090



0022928.110



0022928.203.016



0022928.209.016



0022928.229



0022928.485

APPLICATIONS

GAS GAS MC 85 2021 2022 2023 2024 | KTM SX 85 2018 2019 2020 2021 2022 2023 2024

RADIATOR SCOOPS
0021814



0021814.011.016



0021814.014



0021814.030



0021814.031



0021814.090



0021814.110



0021814.209.016



0021814.229



0021814.237



0021814.485

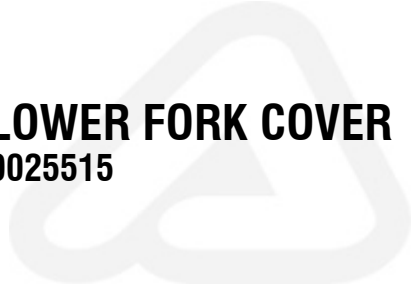
APPLICATIONS

GAS GAS MC 65 2021 2022 2023 | KTM SX 65 2016 2017 2018 2019 2020 2021 2022 2023

SIZES

17 017

LOWER FORK COVER
0025515



0025515.011.016



0025515.090



0025515.110



0025515.030

APPLICATIONS

GAS GAS MC 50 2024 2025 | GAS GAS MC-E 3 2025 | GAS GAS MC-E 5 2021 2022 2023 2024 2025 | KTM SX 50 2024 2025 | KTM SX-E 3 2025 | KTM SX-E 5 2025



LOWER FORK COVER
0023045



0023045.011.016



0023045.014



0023045.072



0023045.132



0023045.092



0023045.030



0023045.031



0023045.032



0023045.040



0023045.041



0023045.062



0023045.090



0023045.110

GAS GAS / LOWER FORK COVERS
LOWER FORK COVER



APPLICATIONS

GAS GAS MC 85 2021 2022 2023 2024 2025 | HUSQVARNA TC 85 2018 2019 2020 2021 2022 2023 2024 | KTM SX 85 2018 2019 2020 2021 2022 2023 2024 2025



LOWER FORK COVER
0024044



0024044.011.016



0024044.014



0024044.030



0024044.031



0024044.041



0024044.090



0024044.110

APPLICATIONS

GAS GAS MC 65 2021 2022 2023 2024 2025 | KTM SX 65 2019 2020 2021 2022 2023 2024 2025



**REAR SIDE COWLING
0025514**



0025514.011.016



0025514.030



0025514.090



0025514.110

APPLICATIONS

GAS GAS MC 50 2021 2022 2023 | GAS GAS MC-E 5 2021 2022 2023 2024 | KTM SX 50 2016 2017 2018 2019 2020 2021 2022 2023 | KTM SX-E 3 2023 2024 | KTM SX-E 5 2020 2021 2022 2023 2024

REAR FENDER
0024624



0024624.030



0024624.090



0024624.110

APPLICATIONS

GAS GAS EC 250 2021 2022 2023 | GAS GAS EC 250 F 2021 2022 2023 | GAS GAS EC 300 2021 2022 2023 | GAS GAS EC 350 F 2021 2022 2023

REAR FENDER
0024623



0024623.030



0024623.072



0024623.092



0024623.132



0024623.090



0024623.110

APPLICATIONS

GAS GAS EX 250 2022 2023 | GAS GAS EX 250 F 2021 2022 2023 | GAS GAS EX 300 2021 2022 2023 | GAS GAS EX 350 F 2021 2022 2023 |
GAS GAS EX 450 F 2021 2022 2023 | GAS GAS MC 125 2021 2022 2023 | GAS GAS MC 250 2022 2023 | GAS GAS MC 250 F 2021 2022 2023 |
GAS GAS MC 350 F 2022 2023 | GAS GAS MC 450 F 2021 2022 2023

REAR FENDER
0022931



0022931.011.016



0022931.072



0022931.092



0022931.132



0022931.030



0022931.031



0022931.090



0022931.110

APPLICATIONS

GAS GAS MC 85 2021 2022 2023 2024 | KTM SX 85 2018 2019 2020 2021 2022 2023 2024

REAR/SIDE COWLING
0021813



0021813.011.016



0021813.030



0021813.031



0021813.041



0021813.090



0021813.110

APPLICATIONS

GAS GAS MC 65 2021 2022 2023 | KTM SX 65 2016 2017 2018 2019 2020 2021 2022 2023

AIR BOX COVER
0024627



0024627.090



0024627.072



0024627.132



0024627.092



0024627.030



0024627.110

APPLICATIONS

GAS GAS EC 250 2021 2022 2023 | GAS GAS EC 250 F 2021 2022 2023 | GAS GAS EC 300 2021 2022 2023 | GAS GAS EC 350 F 2021 2022 2023 | GAS GAS EX 250 2022 2023 | GAS GAS EX 250 F 2021 2022 2023 | GAS GAS EX 300 2021 2022 2023 | GAS GAS EX 350 F 2021 2022 2023 | GAS GAS EX 450 F 2021 2022 2023 | GAS GAS MC 125 2021 2022 2023 | GAS GAS MC 250 2022 2023 | GAS GAS MC 250 F 2021 2022 2023 | GAS GAS MC 350 F 2022 2023 | GAS GAS MC 450 F 2021 2022 2023

AIR BOX COVER
0022930



0022930.011.016



0022930.072



0022930.092



0022930.132



0022930.030



0022930.031



0022930.090



0022930.110

APPLICATIONS

GAS GAS MC 85 2021 2022 2023 2024 | KTM SX 85 2018 2019 2020 2021 2022 2023 2024

SIDE PANELS
0024626



0024626.090



0024626.072



0024626.092



0024626.132



0024626.237



0024626.349

APPLICATIONS

GAS GAS EC 250 2021 2022 2023 | GAS GAS EC 250 F 2021 2022 2023 | GAS GAS EC 300 2021 2022 2023 | GAS GAS EC 350 F 2021 2022 2023 | GAS GAS EX 250 2022 2023 | GAS GAS EX 250 F 2021 2022 2023 | GAS GAS EX 300 2021 2022 2023 | GAS GAS EX 350 F 2021 2022 2023 | GAS GAS EX 450 F 2021 2022 2023 | GAS GAS MC 125 2021 2022 2023 | GAS GAS MC 250 2022 2023 | GAS GAS MC 250 F 2021 2022 2023 | GAS GAS MC 350 F 2022 2023 | GAS GAS MC 450 F 2021 2022 2023

SIDE PANELS
0022929



0022929.011.016



0022929.072



0022929.092



0022929.132



0022929.030



0022929.031



0022929.090



0022929.110

APPLICATIONS

GAS GAS MC 85 2021 2022 2023 2024 | KTM SX 85 2018 2019 2020 2021 2022 2023 2024



**HEADLIGHT MASK
0024629**



0024629.030



0024629.090

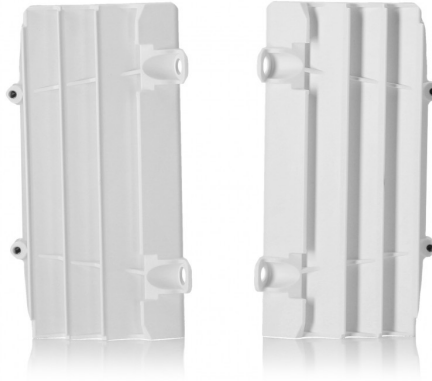


0024629.110

APPLICATIONS

GAS GAS EC 250 2021 2022 2023 | GAS GAS EC 250 F 2021 2022 2023 | GAS GAS EC 300 2021 2022 2023 | GAS GAS EC 350 F 2021 2022 2023

**RADIATOR LOUVERS
FOR GAS GAS
0024638**



0024638.030



0024638.090

APPLICATIONS

GAS GAS EC 250 2021 2022 2023 | GAS GAS EC 250 F 2021 2022 2023 | GAS GAS EC 300 2021 2022 2023 | GAS GAS EC 350 F 2021 2022 2023 | GAS GAS EX 250 2022 2023 | GAS GAS EX 250 F 2021 2022 2023 | GAS GAS EX 300 2021 2022 2023 | GAS GAS EX 350 F 2021 2022 2023 | GAS GAS EX 450 F 2021 2022 2023 | GAS GAS MC 125 2021 2022 2023 | GAS GAS MC 250 2022 2023 | GAS GAS MC 250 F 2021 2022 2023 | GAS GAS MC 350 F 2022 2023 | GAS GAS MC 450 F 2021 2022 2023

REPLICA CHAIN GUIDE
0025789



0025789.090

APPLICATIONS

GAS GAS MC 85 2021 2022 2023 2024 | HUSQVARNA FE 250 2014 2015 2016 2017 2018 2019 2020 2021 2022 2023 | HUSQVARNA FE 350 2014 2015 2016 2017 2018 2019 2020 2021 2022 2023 | HUSQVARNA FE 350 PRO 2024 2025 | HUSQVARNA FE 350 S 2022 2023 | HUSQVARNA FE 450 2014 2015 2016 2017 2018 2019 2020 2021 2022 2023 | HUSQVARNA FE 501 2014 2015 2016 2017 2018 2019 2020 2021 2022 2023 | HUSQVARNA FE 501 S 2022 2023 | HUSQVARNA TC 85 2015 2016 2017 2018 2019 2020 2021 2022 2023 2024 | HUSQVARNA TE 125 2014 2015 2016 | HUSQVARNA TE 150i 2020 2021 2022 2023 | HUSQVARNA TE 250 2014 2015 2016 2017 | HUSQVARNA TE 250i 2018 2019 2020 2021 2022 2023 | HUSQVARNA TE 300 2014 2015 2016 2017 | HUSQVARNA TE 300i 2018 2019 2020 2021 2022 2023 | KTM EXC 125 2014 2015 2016 | KTM EXC 150 TPI 2020 2021 2022 2023 | KTM EXC 200 2014 2015 2016 2017 2018 | KTM EXC 250 2014 2015 2016 2017 | KTM EXC 250 TPI 2017 2018 2019 2020 2021 2022 2023 | KTM EXC 300 2014 2016 2017 | KTM EXC 300 TPI 2018 2019 2020 2021 2022 2023 | KTM EXC-F 250 2014 2015 2016 2017 2018 2019 2020 2021 2022 2023 | KTM EXC-F 350 2014 2015 2016 2017 2018 2019 2020 2021 2022 2023 | KTM EXC-F 450 2014 2015 2016 2017 2018 2019 2020 2021 2022 2023 | KTM SX 85 2015 2016 2017 2018 2019 2020 2021 2022 2023 2024 | KTM XC-W 125 2017 2018 2019 | KTM XC-W 150 TPI 2019 2020 2021 2022 2023 | KTM XC-W 250 TPI 2019 2020 2021 2022 2023 | KTM XC-W 300 TPI 2019 2020 2021 2022 2023 | KTM XCF-W 350 2020 2021 2022 2023 | KTM XCF-W 450 2023 | KTM XCF-W 500 2020 2021 2022 2023

PRODUCTS RELATED



0022933
FULL PLASTIC KIT FOR KTM

- 011.016 030
- 031 072
- 090 092
- 110 132
- 553 553.019
- 553.020 553.021
- 553.023



**REPLICA CHAIN GUIDE
0024635**



0024635.090

APPLICATIONS

GAS GAS EC 250 2021 2022 2023 | GAS GAS EC 250 F 2021 2022 2023 | GAS GAS EC 300 2021 2022 2023 | GAS GAS EC 350 F 2021 2022 2023 | GAS GAS EX 250 2022 2023 | GAS GAS EX 250 F 2021 2022 2023 | GAS GAS EX 300 2021 2022 2023 | GAS GAS EX 350 F 2021 2022 2023 | GAS GAS EX 450 F 2021 2022 2023 | GAS GAS MC 125 2021 2022 2023 | GAS GAS MC 250 2022 2023 | GAS GAS MC 250 F 2021 2022 2023 | GAS GAS MC 350 F 2022 2023 | GAS GAS MC 450 F 2021 2022 2023

MUD FLAP
0025311



0025311.090

APPLICATIONS

GAS GAS MC 65 2021 2022 2023 | HUSQVARNA TC 65 2017 2018 2019 2020 2021 2022 2023 | KTM SX 65 2016 2017 2018 2019 2020 2021 2022 2023