



**FRONT FENDER**  
0026847



0026847.031



0026847.071



0026847.090

**APPLICATIONS**

HUSQVARNA FC 250 2023 2024 2025 | HUSQVARNA FC 350 2023 2024 2025 | HUSQVARNA FC 450 2023 2024 2025 | HUSQVARNA FE 250 2024 2025 | HUSQVARNA FE 350 2024 2025 | HUSQVARNA FE 350 PRO 2024 2025 | HUSQVARNA FE 350 S 2024 2025 | HUSQVARNA FE 450 2024 2025 | HUSQVARNA FE 501 2024 2025 | HUSQVARNA FX 350 2023 2024 2025 | HUSQVARNA TC 125 2023 2024 2025 | HUSQVARNA TC 150 2025 | HUSQVARNA TC 250 2023 2024 2025 | HUSQVARNA TE 125 2024 2025 | HUSQVARNA TE 150 2024 2025 | HUSQVARNA TE 250 2024 2025 | HUSQVARNA TE 300 2024 2025 | HUSQVARNA TE 300 PRO 2024 2025 | HUSQVARNA TX 300 2023 2024 2025

---

**FRONT FENDER**  
0023540



0023540.030



0023540.031



0023540.040



0023540.090

---

**APPLICATIONS**

HUSQVARNA TC 65 2017 2018 2019 2020 2021 2022 2023

---

**FRONT FENDER**  
**0023040**



0023040.030



0023040.031



0023040.040



0023040.090

---

**APPLICATIONS**

HUSQVARNA TC 85 2018 2019 2020 2021 2022 2023 2024

**FRONT FENDER**  
0022801



0022801.030



0022801.040



0022801.090

**APPLICATIONS**

HUSQVARNA TC 85 2014 2015 2016 2017

**FRONT FENDER**  
0017684



0017684.030



0017684.090

**APPLICATIONS**

HUSABERG FE 250 2013 2014 | HUSABERG FE 350 2013 2014 | HUSABERG FE 450 2013 2014 | HUSABERG TE 125 2013 2014 | HUSABERG TE 250 2013 2014 | HUSABERG TE 300 2013 2014 | HUSQVARNA FE 250 2014 | HUSQVARNA FE 350 2014 | HUSQVARNA FE 450 2014 | HUSQVARNA FE 501 2014 | HUSQVARNA TE 125 2014 | HUSQVARNA TE 250 2014 | HUSQVARNA TE 300 2014

FRONT FENDER  
0021825



0021825.030



0021825.031



0021825.072



0021825.132



0021825.092



0021825.040



0021825.041



0021825.070



0021825.083



0021825.090

APPLICATIONS

HUSQVARNA FC 250 2016 2017 2018 2019 2020 2021 2022 | HUSQVARNA FC 350 2016 2017 2018 2019 2020 2021 2022 | HUSQVARNA FC 450 2016 2017 2018 2019 2020 2021 2022 | HUSQVARNA FE 250 2017 2018 2019 2020 2021 2022 2023 | HUSQVARNA FE 350 2017 2018 2019 2020 2021 2022 2023 | HUSQVARNA FE 350 S 2022 2023 | HUSQVARNA FE 450 2017 2018 2019 2020 2021 2022 2023 | HUSQVARNA FE 501 2017 2018 2019 2020 2021 2022 2023 | HUSQVARNA FE 501 S 2022 2023 | HUSQVARNA FX 350 2020 2021 2022 | HUSQVARNA FX 450 2020 2021 2022 | HUSQVARNA TC 125 2016 2017 2018 2019 2020 2021 2022 | HUSQVARNA TC 250 2017 2018 2019 2020 2021 2022 | HUSQVARNA TE 150i 2020 2021 2022 2023 | HUSQVARNA TE 250 2017 | HUSQVARNA TE 250i 2018 2019 2020 2021 2022 2023 | HUSQVARNA TE 300 2017 | HUSQVARNA TE 300i 2018 2019 2020 2021 2022 2023 | HUSQVARNA TX 125 2017 2018 2019 | HUSQVARNA TX 300 2020 2021 2022

**FRONT FENDER**  
0017685



0017685.030



0017685.090

**APPLICATIONS**

HUSQVARNA FC 250 2014 2015 | HUSQVARNA FC 350 2014 2015 | HUSQVARNA FC 450 2014 2015 | HUSQVARNA FE 250 2015 2016 |  
HUSQVARNA FE 350 2015 2016 | HUSQVARNA FE 450 2015 2016 | HUSQVARNA FE 501 2015 2016 | HUSQVARNA TC 125 2014 2015 |  
HUSQVARNA TC 250 2014 2015 2016 | HUSQVARNA TE 125 2015 2016 | HUSQVARNA TE 250 2015 2016 | HUSQVARNA TE 300 2015 2016

**FRONT NUMBER  
PLATE**  
0025454



0025454.031



0025454.232



0025454.090



0025454.234

## APPLICATIONS

HUSQVARNA FC 250 2023 2024 2025 | HUSQVARNA FC 350 2023 2024 2025 | HUSQVARNA FC 450 2023 2024 2025 | HUSQVARNA FX 350 2023 2024 2025 | HUSQVARNA FX 450 2023 2024 | HUSQVARNA TC 125 2023 2024 2025 | HUSQVARNA TC 150 2025 | HUSQVARNA TC 250 2023 2024 2025 | HUSQVARNA TX 300 2023 2024 2025



**FRONT NUMBER  
PLATE**  
0023541



0023541.030



0023541.031



0023541.040



0023541.090

## APPLICATIONS

HUSQVARNA TC 65 2017 2018 2019 2020 2021 2022 2023

FRONT NUMBER  
PLATE  
0023524



0023524.030



0023524.072



0023524.092



0023524.132



0023524.031



0023524.070



0023524.083



0023524.090



0023524.234



0023524.486

APPLICATIONS

HUSQVARNA FC 250 2019 2020 2021 2022 | HUSQVARNA FC 350 2019 2020 2021 2022 | HUSQVARNA FC 450 2019 2020 2021 2022 |  
HUSQVARNA FX 350 2020 2021 2022 | HUSQVARNA FX 450 2020 2021 2022 | HUSQVARNA TC 125 2019 2020 2021 2022 | HUSQVARNA TC  
250 2019 2020 2021 2022 | HUSQVARNA TX 300 2020 2021 2022

**FRONT NUMBER  
PLATE  
0023041**



0023041.030



0023041.031



0023041.040



0023041.090

**APPLICATIONS**

HUSQVARNA TC 85 2018 2019 2020 2021 2022 2023 2024



**FRONT NUMBER  
PLATE**  
0022802



0022802.030



0022802.040



0022802.090

**APPLICATIONS**

HUSQVARNA TC 85 2014 2015 2016 2017

**FRONT NUMBER  
PLATE**  
0021826



0021826.030



0021826.041



0021826.061



0021826.090

**APPLICATIONS**

HUSQVARNA FC 250 2016 2017 2018 | HUSQVARNA FC 350 2016 2017 2018 | HUSQVARNA FC 450 2016 2017 2018 | HUSQVARNA TC 125 2016 2017 2018 | HUSQVARNA TC 250 2017 2018

**FRONT NUMBER  
PLATE**  
0017697



0017697.030



0017697.090

**APPLICATIONS**

HUSQVARNA FC 250 2014 2015 | HUSQVARNA FC 350 2014 2015 | HUSQVARNA FC 450 2014 2015 | HUSQVARNA TC 125 2014 2015 |  
HUSQVARNA TC 250 2014 2015 2016



**HEADLIGHT MASK FOR  
HUSQVARNA**  
0026853



0026853.031



0026853.090

**APPLICATIONS**

HUSQVARNA FE 250 2024 2025 | HUSQVARNA FE 350 2024 2025 | HUSQVARNA FE 350 PRO 2024 2025 | HUSQVARNA FE 350 S 2024 2025 |  
HUSQVARNA FE 450 2024 2025 | HUSQVARNA FE 501 2024 2025 | HUSQVARNA FE 501 S 2024 2025 | HUSQVARNA TE 125 2024 2025 |  
HUSQVARNA TE 150 2024 2025 | HUSQVARNA TE 250 2024 2025 | HUSQVARNA TE 300 2024 2025 | HUSQVARNA TE 300 PRO 2024 2025



HEADLIGHT MASK VSL  
FOR HUSQVARNA  
0023948



0023948.030

## FEATURES

High energetic performance for OFFROAD use only.  
Maximum brightness and depth of detail guaranteed, even in total dark situations.  
IP68 waterproof: permanent impermeability up to 3 metres deep.  
16 Led, 48W headlight.  
4320 Lumen.  
DC electrical supply from 9 to 32V.

Estimated led lifespan: 50000 hours.  
Operating temperatures between between  $-40^{\circ}$  and  $+85^{\circ}$  C.  
Easy and fast mounting, using the original headlight's rubber bands.  
Developed for enduro KTM/HUSQVARNA bikes from 2017 to 2019

## APPLICATIONS

HUSQVARNA FE 250 2017 2018 2019 | HUSQVARNA FE 350 2017 2018 2019 | HUSQVARNA FE 450 2017 2018 2019 | HUSQVARNA TE 250I 2018 2019 | HUSQVARNA TE 300I 2018 2019



**BOTTOM HEADLIGHT  
MASK FOR  
HUSQVARNA**  
0024287



0024287.031



0024287.062



0024287.090

**APPLICATIONS**

HUSQVARNA FE 250 2020 2021 2022 2023 | HUSQVARNA FE 350 2020 2021 2022 2023 | HUSQVARNA FE 450 2020 2021 2022 2023 |  
HUSQVARNA FE 501 2020 2021 2022 2023 | HUSQVARNA TE 250I 2020 2021 2022 2023 | HUSQVARNA TE 300I 2020 2021 2022 2023

**PRODUCTS RELATED**



0024049  
HEADLIGHT MASK

031

090

HEADLIGHT MASK  
0024049



0024049.031



0024049.090

APPLICATIONS

HUSQVARNA FE 250 2020 2021 2022 2023 | HUSQVARNA FE 350 2020 2021 2022 2023 | HUSQVARNA FE 350 S 2022 2023 | HUSQVARNA FE 450 2020 2021 2022 2023 | HUSQVARNA FE 501 2020 2021 2022 2023 | HUSQVARNA FE 501 S 2022 2023 | HUSQVARNA TE 150I 2020 2021 2022 2023 | HUSQVARNA TE 250I 2020 2021 2022 2023 | HUSQVARNA TE 300I 2020 2021 2022 2023

PRODUCTS RELATED



0024287  
BOTTOM HEADLIGHT MASK  
FOR HUSQVARNA

□ 031

■ 062

■ 090

**HEADLIGHT MASK**  
0023426



0023426.030



0023426.040



0023426.062



0023426.070



0023426.090

**APPLICATIONS**

HUSQVARNA FE 250 2017 2018 2019 | HUSQVARNA FE 350 2017 2018 2019 | HUSQVARNA FE 450 2017 2018 2019 | HUSQVARNA FE 501 2017 2018 2019 | HUSQVARNA TE 250 2017 | HUSQVARNA TE 250I 2018 2019 | HUSQVARNA TE 300 2017 | HUSQVARNA TE 300I 2018 2019 | HUSQVARNA TX 125 2017 2018 2019



**RADIATOR SCOOPS**  
0026848



0026848.031



0026848.071



0026848.090

**APPLICATIONS**

HUSQVARNA FC 250 2023 2024 | HUSQVARNA FC 350 2023 2024 | HUSQVARNA FC 450 2023 2024 | HUSQVARNA FE 250 2024 2025 |  
HUSQVARNA FE 350 2024 2025 | HUSQVARNA FE 350 PRO 2024 2025 | HUSQVARNA FE 350 S 2024 2025 | HUSQVARNA FE 450 2024 2025 |  
HUSQVARNA FE 501 2024 2025 | HUSQVARNA FE 501 S 2024 2025 | HUSQVARNA FX 350 2023 2024 | HUSQVARNA TC 125 2023 2024 |  
HUSQVARNA TC 250 2023 2024 | HUSQVARNA TE 150 2024 2025 | HUSQVARNA TE 250 2024 2025 | HUSQVARNA TE 300 2024 2025 |  
HUSQVARNA TE 300 PRO 2024 2025 | HUSQVARNA TX 300 2023 2024

**RADIATOR SCOOPS**  
0023042



0023042.030



0023042.031



0023042.071



0023042.040



0023042.090

**APPLICATIONS**

HUSQVARNA TC 85 2018 2019 2020 2021 2022 2023 2024

---

**RADIATOR SCOOPS**  
0023543



0023543.030



0023543.031



0023543.071



0023543.040



0023543.090

---

**APPLICATIONS**

HUSQVARNA TC 65 2017 2018 2019 2020 2021 2022 2023

RADIATOR SCOOPS  
0023522



APPLICATIONS

HUSQVARNA FC 250 2019 2020 2021 2022 | HUSQVARNA FC 350 2019 2020 2021 2022 | HUSQVARNA FC 450 2019 2020 2021 2022 | HUSQVARNA FE 250 2020 2021 2022 2023 | HUSQVARNA FE 350 2020 2021 2022 2023 | HUSQVARNA FE 350 S 2022 2023 | HUSQVARNA FE 450 2020 2021 2022 2023 | HUSQVARNA FE 501 2020 2021 2022 2023 | HUSQVARNA FE 501 S 2022 2023 | HUSQVARNA FS 450 2019 2020 | HUSQVARNA FX 350 2020 2021 2022 | HUSQVARNA FX 450 2020 2021 2022 | HUSQVARNA TC 125 2019 2020 2021 2022 | HUSQVARNA TC 250 2019 2020 2021 2022 | HUSQVARNA TE 150I 2020 2021 2022 2023 | HUSQVARNA TE 250I 2020 2021 2022 2023 | HUSQVARNA TE 300I 2020 2021 2022 2023 | HUSQVARNA TX 300 2020 2021 2022

---

**RADIATOR SCOOPS**  
0013090



0013090.110

---

**APPLICATIONS**

HUSQVARNA CR 250 2T 2008 | HUSQVARNA TC 250 2008 | HUSQVARNA WR 125 2T 2008 | HUSQVARNA WR 250 2T 2008



---

**RADIATOR SCOOPS**  
0022803



0022803.030



0022803.040



0022803.090

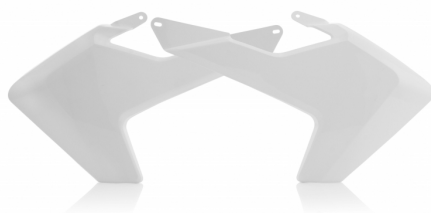
---

**APPLICATIONS**

HUSQVARNA TC 85 2014 2015 2016 2017

---

**RADIATOR SCOOPS**  
0021827



0021827.030



0021827.040



0021827.041



0021827.070



0021827.090

---

**APPLICATIONS**

HUSQVARNA FC 250 2016 2017 2018 | HUSQVARNA FC 350 2016 2017 2018 | HUSQVARNA FC 450 2016 2017 2018 | HUSQVARNA FE 250 2017 2018 2019 | HUSQVARNA FE 350 2017 2018 2019 | HUSQVARNA FE 450 2017 2018 2019 | HUSQVARNA FE 501 2017 2018 2019 | HUSQVARNA TC 125 2016 2017 2018 | HUSQVARNA TC 250 2017 2018 | HUSQVARNA TE 250 2017 | HUSQVARNA TE 250I 2018 2019 | HUSQVARNA TE 300 2017 | HUSQVARNA TE 300I 2018 2019 | HUSQVARNA TX 125 2017 2018 2019

**RADIATOR SCOOPS**  
0017698



0017698.030



0017698.090



0017698.234



0017698.248

**FEATURES**

All Acerbis replica plastic has the original factory shape of the OEM plastic of each specific model.

**APPLICATIONS**

HUSABERG FE 250 2013 2014 | HUSABERG FE 350 2013 2014 | HUSABERG FE 450 2013 2014 | HUSABERG TE 125 2013 2014 | HUSABERG TE 250 2013 2014 | HUSABERG TE 300 2013 2014 | HUSQVARNA FC 250 2014 2015 | HUSQVARNA FC 350 2014 2015 | HUSQVARNA FC 450 2014 2015 | HUSQVARNA FE 250 2014 2015 2016 | HUSQVARNA FE 350 2014 2015 2016 | HUSQVARNA FE 450 2014 2015 2016 | HUSQVARNA FE 501 2014 2015 2016 | HUSQVARNA TC 125 2014 2015 | HUSQVARNA TC 250 2014 2015 2016 | HUSQVARNA TE 125 2014 2015 2016 | HUSQVARNA TE 250 2014 2015 2016 | HUSQVARNA TE 300 2014 2015 2016

**RADIATOR LOUVERS  
FOR KTM /  
HUSQVARNA**  
0024002



0024002.011.016



0024002.030



0024002.090

**APPLICATIONS**

HUSQVARNA FC 250 2019 2020 2021 2022 | HUSQVARNA FC 350 2019 2020 2021 2022 | HUSQVARNA FC 450 2019 2020 2021 2022 | HUSQVARNA FE 250 2020 2021 2022 2023 | HUSQVARNA FE 350 2020 2021 2022 2023 | HUSQVARNA FE 350 PRO 2024 | HUSQVARNA FE 350 S 2022 2023 | HUSQVARNA FE 450 2020 2021 2022 2023 | HUSQVARNA FE 501 2020 2021 2022 2023 | HUSQVARNA FE 501 S 2022 2023 | HUSQVARNA FX 350 2020 2021 2022 | HUSQVARNA FX 450 2020 2021 2022 | HUSQVARNA TC 125 2019 2020 2021 2022 | HUSQVARNA TC 250 2019 2020 2021 2022 | HUSQVARNA TE 150I 2020 2021 2022 2023 | HUSQVARNA TE 250I 2020 2021 2022 2023 | HUSQVARNA TE 300I 2020 2021 2022 2023 | HUSQVARNA TX 300 2020 2021 2022 | KTM EXC 150 TPI 2020 2021 2022 2023 | KTM EXC 250 TPI 2020 2021 2022 2023 | KTM EXC 300 TPI 2020 2021 2022 2023 | KTM EXC-F 250 2020 2021 2022 2023 | KTM EXC-F 350 2020 2021 2022 2023 | KTM EXC-F 450 2020 2021 2022 2023 | KTM EXC-F 500 2020 2021 2022 2023 | KTM SX 125 2019 2020 2021 2022 | KTM SX 150 2019 2020 | KTM SX 250 2019 2020 2021 2022 | KTM SX-F 250 2019 2020 2021 2022 | KTM SX-F 350 2019 2020 2021 2022 | KTM SX-F 450 2019 2020 2021 2022 | KTM XC 250 TPI 2020 2021 2022 | KTM XC 300 TPI 2020 2021 2022 | KTM XC-F 250 2020 2021 2022 | KTM XC-F 350 2020 2021 2022 | KTM XC-F 450 2020 2021 2022 | KTM XC-W 250 TPI 2020 2021 2022 2023 | KTM XC-W 300 TPI 2020 2021 2022 2023 | KTM XCF-W 350 2020 2021 2022 2023 | KTM XCF-W 450 2023 | KTM XCF-W 500 2020 2021 2022 2023

**PRODUCTS RELATED**



0023600  
X-GRIP FOR HUSQVARNA  
FRAME PROTECTOR

- 249
- 293
- 315
- 319
- 349
- 726
- 878

**RADIATOR LOUVERS  
FOR KTM /  
HUSQVARNA**  
0023311



0023311.011.016



0023311.030



0023311.041



0023311.090

**APPLICATIONS**

HUSQVARNA FC 250 2016 2017 2018 | HUSQVARNA FC 350 2016 2017 2018 | HUSQVARNA FC 450 2016 2017 2018 | HUSQVARNA FE 250 2017 2018 2019 | HUSQVARNA FE 350 2017 2018 2019 | HUSQVARNA FE 450 2017 2018 2019 | HUSQVARNA FE 501 2017 2018 2019 | HUSQVARNA TC 125 2016 2017 2018 | HUSQVARNA TC 250 2017 2018 | HUSQVARNA TE 250 2017 | HUSQVARNA TE 250I 2018 2019 | HUSQVARNA TE 300 2017 | HUSQVARNA TE 300I 2018 2019 | HUSQVARNA TX 125 2017 2018 2019 | KTM EXC 250 2017 | KTM EXC 250 TPI 2018 2019 | KTM EXC 300 2017 | KTM EXC 300 TPI 2018 2019 | KTM EXC-F 250 2017 2018 2019 | KTM EXC-F 350 2017 2018 2019 | KTM EXC-F 450 2017 2018 2019 | KTM EXC-F 500 2017 2018 2019 | KTM SX 125 2016 2017 2018 | KTM SX 150 2016 2017 2018 | KTM SX 250 2017 2018 | KTM SX-F 250 2016 2017 2018 | KTM SX-F 350 2016 2017 2018 | KTM SX-F 450 2016 2017 2018 | KTM XC-W 125 2017 2018 2019 | KTM XC-W 150 TPI 2019 | KTM XC-W 250 TPI 2019 | KTM XC-W 300 TPI 2019

**SIDE PANELS**  
0025450



0025450.031



0025450.090

**APPLICATIONS**

HUSQVARNA FC 250 2023 2024 | HUSQVARNA FC 350 2023 2024 | HUSQVARNA FC 450 2023 2024 | HUSQVARNA FE 250 2024 2025 |  
HUSQVARNA FE 350 2024 2025 | HUSQVARNA FE 350 PRO 2024 2025 | HUSQVARNA FE 350 S 2024 2025 | HUSQVARNA FE 450 2024 2025 |  
HUSQVARNA FE 501 2024 2025 | HUSQVARNA FE 501 S 2024 2025 | HUSQVARNA FX 350 2023 2024 | HUSQVARNA FX 450 2023 2024 |  
HUSQVARNA TC 125 2023 2024 | HUSQVARNA TC 250 2023 2024 | HUSQVARNA TE 125 2024 2025 | HUSQVARNA TE 150 2024 2025 |  
HUSQVARNA TE 250 2024 2025 | HUSQVARNA TE 300 2024 2025 | HUSQVARNA TE 300 PRO 2024 2025 | HUSQVARNA TX 300 2023 2024



**SHOCK ABSORBER  
COVER**  
0025452



0025452.031



0025452.090

**APPLICATIONS**

HUSQVARNA FC 250 2023 2024 | HUSQVARNA FC 350 2023 2024 | HUSQVARNA FC 450 2023 2024 | HUSQVARNA FE 250 2024 2025 |  
HUSQVARNA FE 350 2024 2025 | HUSQVARNA FE 350 PRO 2024 2025 | HUSQVARNA FE 350 S 2024 2025 | HUSQVARNA FE 450 2024 2025 |  
HUSQVARNA FE 501 2024 2025 | HUSQVARNA FE 501 S 2024 2025 | HUSQVARNA FX 350 2023 2024 | HUSQVARNA FX 450 2023 2024 |  
HUSQVARNA TC 125 2023 2024 | HUSQVARNA TC 250 2023 2024 | HUSQVARNA TE 125 2024 2025 | HUSQVARNA TE 150 2024 2025 |  
HUSQVARNA TE 250 2024 2025 | HUSQVARNA TE 300 2024 2025 | HUSQVARNA TE 300 PRO 2024 2025 | HUSQVARNA TX 300 2023 2024

**RUBBER INSERT FOR  
SIDE PANELS**  
0023710



0023710.090

**PRODUCTS RELATED**



0023523  
SIDE PANELS

- |                              |                              |
|------------------------------|------------------------------|
| <input type="checkbox"/> 030 | <input type="checkbox"/> 031 |
| <input type="checkbox"/> 070 | <input type="checkbox"/> 072 |
| <input type="checkbox"/> 083 | <input type="checkbox"/> 090 |
| <input type="checkbox"/> 092 | <input type="checkbox"/> 132 |
| <input type="checkbox"/> 235 | <input type="checkbox"/> 237 |



**SIDE PANELS VENTED**  
**0024263**



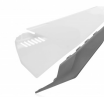
0024263.030



0024263.031



0024263.090

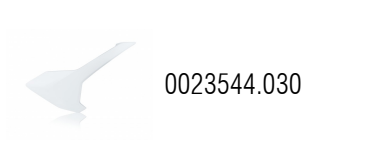


0024263.235

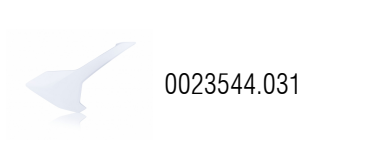
**APPLICATIONS**

HUSQVARNA FC 250 2019 2020 2021 2022 | HUSQVARNA FC 350 2019 2020 2021 2022 | HUSQVARNA FC 450 2019 2020 2021 2022 | HUSQVARNA FE 250 2020 2021 2022 2023 | HUSQVARNA FE 350 2020 2021 2022 2023 | HUSQVARNA FE 350 S 2022 2023 | HUSQVARNA FE 450 2020 2021 2022 2023 | HUSQVARNA FE 501 2020 2021 2022 2023 | HUSQVARNA FE 501 S 2022 2023 | HUSQVARNA FX 350 2020 2021 2022 | HUSQVARNA FX 450 2020 2021 2022 | HUSQVARNA TC 125 2019 2020 2021 2022 | HUSQVARNA TC 250 2019 2020 2021 2022 | HUSQVARNA TE 150I 2020 2021 2022 2023 | HUSQVARNA TE 250I 2020 2021 2022 2023 | HUSQVARNA TE 300I 2020 2021 2022 2023 | HUSQVARNA TX 300 2020 2021 2022

**SIDE PANELS**  
0023544



0023544.030



0023544.031



0023544.040



0023544.090

**APPLICATIONS**

HUSQVARNA TC 65 2017 2018 2019 2020 2021 2022

**SIDE PANELS**  
0023523



0023523.031



0023523.072



0023523.092



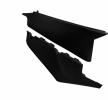
0023523.132



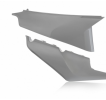
0023523.030



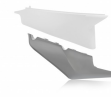
0023523.083



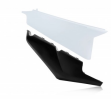
0023523.090



0023523.070



0023523.235



0023523.237

**APPLICATIONS**

HUSQVARNA FC 250 2019 2020 2021 2022 | HUSQVARNA FC 350 2019 2020 2021 2022 | HUSQVARNA FC 450 2019 2020 2021 2022 | HUSQVARNA FE 250 2020 2021 2022 2023 | HUSQVARNA FE 350 2020 2021 2022 2023 | HUSQVARNA FE 350 S 2022 2023 | HUSQVARNA FE 450 2020 2021 2022 2023 | HUSQVARNA FE 501 2020 2021 2022 2023 | HUSQVARNA FE 501 S 2022 2023 | HUSQVARNA FX 350 2020 2021 2022 | HUSQVARNA FX 450 2020 2021 2022 | HUSQVARNA TC 125 2019 2020 2021 2022 | HUSQVARNA TC 250 2019 2020 2021 2022 | HUSQVARNA TE 150I 2020 2021 2022 2023 | HUSQVARNA TE 250I 2020 2021 2022 2023 | HUSQVARNA TE 300I 2020 2021 2022 2023 | HUSQVARNA TX 300 2020 2021 2022

**PRODUCTS RELATED**



0023710  
RUBBER INSERT FOR SIDE  
PANELS

■ 090

**SIDE PANELS**  
0023043



0023043.030



0023043.031



0023043.040



0023043.090

**APPLICATIONS**

HUSQVARNA TC 85 2018 2019 2020 2021 2022 2023 2024

**SIDE PANELS**  
0021828



0021828.030



0021828.040



0021828.041



0021828.090



0021828.061



0021828.070



0021828.133

**APPLICATIONS**

HUSQVARNA FC 250 2016 2017 2018 | HUSQVARNA FC 350 2016 2017 2018 | HUSQVARNA FC 450 2016 2017 2018 | HUSQVARNA FE 250 2017 2018 2019 | HUSQVARNA FE 350 2017 2018 2019 | HUSQVARNA FE 450 2017 2018 2019 | HUSQVARNA FE 501 2017 2018 2019 | HUSQVARNA TC 125 2016 2017 2018 | HUSQVARNA TC 250 2017 2018 | HUSQVARNA TE 250 2017 | HUSQVARNA TE 250I 2018 2019 | HUSQVARNA TE 300 2017 | HUSQVARNA TE 300I 2018 2019 | HUSQVARNA TX 125 2017 2018 2019

**SIDE PANELS**  
**0017699**



0017699.030



0017699.090

**APPLICATIONS**

HUSABERG FE 250 2013 2014 | HUSABERG FE 350 2013 2014 | HUSABERG FE 450 2013 2014 | HUSABERG TE 125 2013 2014 | HUSABERG TE 250 2013 2014 | HUSABERG TE 300 2013 2014 | HUSQVARNA FC 250 2014 2015 | HUSQVARNA FC 350 2014 2015 | HUSQVARNA FC 450 2014 2015 | HUSQVARNA FE 250 2014 2015 2016 | HUSQVARNA FE 350 2014 2015 2016 | HUSQVARNA FE 450 2014 2015 2016 | HUSQVARNA FE 501 2014 2015 2016 | HUSQVARNA TC 125 2014 2015 | HUSQVARNA TC 250 2014 2016 | HUSQVARNA TE 125 2014 2015 2016 | HUSQVARNA TE 250 2014 2015 2016 | HUSQVARNA TE 300 2014 2015 2016



**AIR BOX COVER**  
0025451



0025451.031



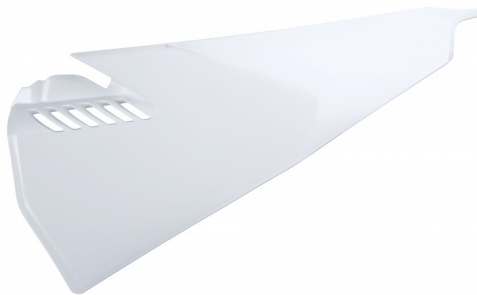
0025451.090

**APPLICATIONS**

HUSQVARNA FC 250 2023 2024 | HUSQVARNA FC 350 2023 2024 | HUSQVARNA FC 450 2023 2024 | HUSQVARNA FE 250 2024 2025 |  
HUSQVARNA FE 350 2024 2025 | HUSQVARNA FE 350 PRO 2024 2025 | HUSQVARNA FE 350 S 2024 2025 | HUSQVARNA FE 450 2024 2025 |  
HUSQVARNA FE 501 2024 2025 | HUSQVARNA FE 501 S 2024 2025 | HUSQVARNA FX 350 2023 2024 | HUSQVARNA FX 450 2023 2024 |  
HUSQVARNA TC 125 2023 2024 | HUSQVARNA TC 250 2023 2024 | HUSQVARNA TE 125 2024 2025 | HUSQVARNA TE 150 2024 2025 |  
HUSQVARNA TE 250 2024 2025 | HUSQVARNA TE 300 2024 2025 | HUSQVARNA TE 300 PRO 2024 2025 | HUSQVARNA TX 300 2023 2024



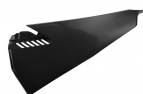
**AIR BOX COVER  
VENTED**  
0024327



0024327.030



0024327.031



0024327.090

**APPLICATIONS**

HUSQVARNA FC 250 2019 2020 2021 2022 | HUSQVARNA FC 350 2019 2020 2021 2022 | HUSQVARNA FC 450 2019 2020 2021 2022 | HUSQVARNA FE 250 2020 2021 2022 2023 | HUSQVARNA FE 350 2020 2021 2022 2023 | HUSQVARNA FE 350 S 2022 2023 | HUSQVARNA FE 450 2020 2021 2022 2023 | HUSQVARNA FE 501 2020 2021 2022 2023 | HUSQVARNA FE 501 S 2022 2023 | HUSQVARNA FX 350 2020 2021 2022 | HUSQVARNA FX 450 2020 2021 2022 | HUSQVARNA TC 125 2019 2020 2021 2022 | HUSQVARNA TC 250 2019 2020 2021 2022 | HUSQVARNA TE 150I 2020 2021 2022 2023 | HUSQVARNA TE 250I 2020 2021 2022 2023 | HUSQVARNA TE 300I 2020 2021 2022 2023 | HUSQVARNA TX 300 2020 2021 2022

---

**AIR BOX COVER**  
0022806



0022806.030



0022806.040



0022806.090

---

**APPLICATIONS**

HUSQVARNA TC 85 2014 2015 2016 2017



**REAR FENDER**  
0026849



0026849.031



0026849.062



0026849.090

**APPLICATIONS**

HUSQVARNA FC 250 2023 2024 2025 | HUSQVARNA FC 350 2023 2024 2025 | HUSQVARNA FC 450 2023 2024 2025 | HUSQVARNA FX 350 2023 2024 2025 | HUSQVARNA TC 125 2023 2024 2025 | HUSQVARNA TC 150 2025 | HUSQVARNA TC 250 2023 2024 2025 | HUSQVARNA TX 300 2023 2024 2025

REAR FENDER  
0024048



0024048.031



0024048.062



0024048.090

APPLICATIONS

HUSQVARNA FE 250 2020 2021 2022 2023 | HUSQVARNA FE 350 2020 2021 2022 2023 | HUSQVARNA FE 350 S 2022 2023 | HUSQVARNA FE 450 2020 2021 2022 2023 | HUSQVARNA FE 501 2020 2021 2022 2023 | HUSQVARNA FE 501 S 2022 2023 | HUSQVARNA TE 150I 2020 2021 2022 2023 | HUSQVARNA TE 250I 2020 2021 2022 2023 | HUSQVARNA TE 300I 2020 2021 2022 2023

**REAR FENDER**  
0023545



0023545.030



0023545.031



0023545.040



0023545.090



0023545.062

**APPLICATIONS**

HUSQVARNA TC 65 2017 2018 2019 2020 2021 2022 2023

REAR FENDER  
0023525



0023525.030



0023525.072



0023525.092



0023525.132



0023525.031



0023525.062



0023525.070



0023525.083



0023525.090

APPLICATIONS

HUSQVARNA FC 250 2019 2020 2021 2022 | HUSQVARNA FC 350 2019 2020 2021 2022 | HUSQVARNA FC 450 2019 2020 2021 2022 | HUSQVARNA FX 350 2020 2021 2022 | HUSQVARNA FX 450 2020 2021 2022 | HUSQVARNA TC 125 2019 2020 2021 2022 | HUSQVARNA TC 250 2019 2020 2021 2022 | HUSQVARNA TX 300 2020 2021 2022

**REAR FENDER**  
**0023044**



0023044.030



0023044.031



0023044.062



0023044.040



0023044.090

**APPLICATIONS**

HUSQVARNA TC 85 2018 2019 2020 2021 2022 2023 2024

---



**REAR FENDER**  
0022804



0022804.030



0022804.040



0022804.090

---

**APPLICATIONS**

HUSQVARNA TC 85 2014 2015 2016 2017



**REAR FENDER**  
**0022373**



0022373.030



0022373.040



0022373.070



0022373.090

**APPLICATIONS**

HUSQVARNA FE 250 2017 2018 2019 | HUSQVARNA FE 350 2017 2018 2019 | HUSQVARNA FE 450 2017 2018 2019 | HUSQVARNA FE 501 2017 2018 2019 | HUSQVARNA TE 250 2017 | HUSQVARNA TE 250I 2018 2019 | HUSQVARNA TE 300 2017 | HUSQVARNA TE 300I 2018 2019 | HUSQVARNA TX 125 2017 2018 2019

REAR FENDER  
0021829



0021829.030



0021829.040



0021829.041



0021829.061



0021829.090



0021829.133

APPLICATIONS

HUSQVARNA FC 250 2016 2017 2018 | HUSQVARNA FC 350 2016 2017 2018 | HUSQVARNA FC 450 2016 2017 2018 | HUSQVARNA TC 125 2016 2017 2018 | HUSQVARNA TC 250 2017 2018

**REAR FENDER**  
0017696



0017696.030



0017696.090

**APPLICATIONS**

HUSABERG FE 250 2013 2014 | HUSABERG FE 350 2013 2014 | HUSABERG FE 450 2013 2014 | HUSABERG TE 125 2013 2014 | HUSABERG TE 250 2013 2014 | HUSABERG TE 300 2013 2014 | HUSQVARNA FC 250 2014 2015 | HUSQVARNA FC 350 2014 2015 | HUSQVARNA FC 450 2014 2015 | HUSQVARNA FE 250 2014 2015 2016 | HUSQVARNA FE 350 2014 2015 2016 | HUSQVARNA FE 450 2014 2015 2016 | HUSQVARNA FE 501 2014 2015 2016 | HUSQVARNA TC 125 2014 2015 | HUSQVARNA TC 250 2014 2015 2016 | HUSQVARNA TE 125 2014 2015 2016 | HUSQVARNA TE 250 2014 2015 2016 | HUSQVARNA TE 300 2014 2015 2016

**LOWER FORK COVER**  
0025455



0025455.031



0025455.062



0025455.090



0025455.040

**APPLICATIONS**

HUSQVARNA FC 250 2023 2024 2025 | HUSQVARNA FC 350 2023 2024 2025 | HUSQVARNA FC 450 2023 2024 2025 | HUSQVARNA FE 250 2024 2025 | HUSQVARNA FE 350 2024 2025 | HUSQVARNA FE 350 PRO 2024 2025 | HUSQVARNA FE 350 S 2024 2025 | HUSQVARNA FE 450 2024 2025 | HUSQVARNA FE 501 2024 2025 | HUSQVARNA FE 501 S 2024 2025 | HUSQVARNA FX 350 2023 2024 2025 | HUSQVARNA FX 450 2023 2024 | HUSQVARNA TC 125 2023 2024 2025 | HUSQVARNA TC 150 2025 | HUSQVARNA TC 250 2023 2024 2025 | HUSQVARNA TE 125 2024 2025 | HUSQVARNA TE 150 2024 2025 | HUSQVARNA TE 250 2024 2025 | HUSQVARNA TE 300 2024 2025 | HUSQVARNA TE 300 PRO 2024 2025 | HUSQVARNA TX 300 2023 2024 2025

**LOWER FORK COVER**  
0023542



0023542.030



0023542.031



0023542.040



0023542.062



0023542.090

**APPLICATIONS**

HUSQVARNA TC 65 2017 2018 2019 2020 2021 2022 2023



**LOWER FORK COVER**  
**0023045**



0023045.011.016



0023045.014



0023045.072



0023045.132



0023045.092



0023045.030



0023045.031



0023045.032



0023045.040



0023045.041



0023045.062



0023045.090



0023045.110

**GAS GAS / LOWER FORK COVERS**  
**LOWER FORK COVER**



---

**APPLICATIONS**

GAS GAS MC 85 2021 2022 2023 2024 2025 | HUSQVARNA TC 85 2018 2019 2020 2021 2022 2023 2024 | KTM SX 85 2018 2019 2020 2021 2022 2023 2024 2025



**LOWER FORK COVER**  
0022805



0022805.040



0022805.060



0022805.090

**APPLICATIONS**

HUSQVARNA TC 85 2014 2015 2016 2017

**SIZES**

16 016





**LOWER FORK COVER**  
0022288



0022288.030



0022288.031



0022288.072



0022288.132



0022288.092



0022288.040



0022288.041



0022288.060



0022288.062



0022288.070



0022288.071



0022288.083



0022288.090

## **APPLICATIONS**

HUSQVARNA FC 250 2016 2017 2018 2019 2020 2021 2022 | HUSQVARNA FC 350 2016 2017 2018 2019 2020 2021 2022 | HUSQVARNA FC 450 2016 2017 2018 2019 2020 2021 2022 | HUSQVARNA FE 250 2016 2017 2018 2019 2020 2021 2022 2023 | HUSQVARNA FE 350 2016 2017 2018 2019 2020 2021 2022 2023 | HUSQVARNA FE 350 S 2022 2023 | HUSQVARNA FE 450 2016 2017 2018 2019 2020 2021 2022 2023 | HUSQVARNA FE 501 2016 2017 2018 2019 2020 2021 2022 2023 | HUSQVARNA FE 501 S 2022 2023 | HUSQVARNA FX 350 2020 2021 2022 | HUSQVARNA FX 450 2020 2021 2022 | HUSQVARNA TC 125 2016 2017 2018 2019 2020 2021 2022 | HUSQVARNA TC 250 2016 2017 2018 2019 2020 2021 2022 | HUSQVARNA TE 125 2016 | HUSQVARNA TE 150I 2020 2021 2022 2023 | HUSQVARNA TE 250 2016 2017 | HUSQVARNA TE 250I 2018 2019 2020 2021 2022 2023 | HUSQVARNA TE 300 2016 2017 | HUSQVARNA TE 300I 2018 2019 2020 2021 2022 2023 | HUSQVARNA TX 125 2017 2018 2019 | HUSQVARNA TX 300 2020 2021 2022



**LOWER FORK COVER**  
**0011649**



0011649.010



0011649.030



0011649.060



0011649.090

**APPLICATIONS**

HUSQVARNA FC 250 2014 | HUSQVARNA FC 350 2014 | HUSQVARNA FC 450 2014 | HUSQVARNA FE 250 2014 2015 | HUSQVARNA FE 350 2014 2015 | HUSQVARNA FE 450 2014 2015 | HUSQVARNA FE 501 2014 2015 | HUSQVARNA TC 125 2014 | HUSQVARNA TC 250 2014 | HUSQVARNA TC 300 2014 | HUSQVARNA TE 125 2014 2015 | HUSQVARNA TE 250 2014 2015 | HUSQVARNA TE 300 2014 2015 | KTM EXC 125 2008 2009 2010 2011 2012 2013 2014 2015 | KTM EXC 200 2008 2009 2010 2011 2012 2013 2014 2015 | KTM EXC 250 2008 2009 2010 2011 2012 2013 2014 2015 | KTM EXC 300 2008 2009 2010 2011 2012 2013 2014 2015 | KTM EXC-F 250 2008 2009 2010 2011 2012 2013 2014 2015 | KTM EXC-F 350 2012 2013 2014 2015 | KTM EXC-F 400 2008 2009 2010 2011 | KTM EXC-F 450 2008 2009 2010 2011 2012 2013 2014 2015 | KTM EXC-F 500 2008 2009 2010 2011 2012 2013 2014 2015 | KTM EXC-F 530 2008 2009 2010 2011 | KTM SX 125 2008 2009 2010 2011 2012 2013 2014 | KTM SX 150 2011 2012 2013 2014 | KTM SX 250 2008 2009 2010 2011 2012 2013 2014 | KTM SX-F 250 2011 2012 2013 2014 | KTM SX-F 350 2011 2012 2013 2014 | KTM SX-F 450 2008 2009 2010 2011 2012 2013 2014 | KTM SX-F 505 2008

**SIZES**

16 016

PLASTIC KIT  
0026854



0026854.031



0026854.090



0026854.553.024



0026854.553.025

APPLICATIONS

HUSQVARNA FE 250 2024 2025 | HUSQVARNA FE 350 2024 2025 | HUSQVARNA FE 350 PRO 2024 2025 | HUSQVARNA FE 350 S 2025 |  
HUSQVARNA FE 450 2024 2025 | HUSQVARNA FE 501 2024 2025 | HUSQVARNA FE 501 S 2024 2025 | HUSQVARNA TE 125 2024 2025 |  
HUSQVARNA TE 150 2024 2025 | HUSQVARNA TE 250 2024 2025 | HUSQVARNA TE 300 2024 2025 | HUSQVARNA TE 300 PRO 2024 2025

**PLASTIC KIT  
COMPATIBLE FOR  
HUSQVARNA**  
0026850



0026850.031



0026850.090



0026850.553.023



0026850.553.024

## APPLICATIONS

HUSQVARNA FC 250 2023 2024 | HUSQVARNA FC 350 2023 2024 | HUSQVARNA FC 450 2023 2024 | HUSQVARNA FX 350 2023 2024 |  
HUSQVARNA TC 125 2023 2024 | HUSQVARNA TC 250 2023 2024 | HUSQVARNA TX 300 2023 2024

PLASTIC KIT  
0024052



0024052.031



0024052.090



0024052.553



0024052.553.022



0024052.553.023

APPLICATIONS

HUSQVARNA FE 250 2020 2021 2022 2023 | HUSQVARNA FE 350 2020 2021 2022 2023 | HUSQVARNA FE 350 S 2022 2023 | HUSQVARNA FE 450 2020 2021 2022 2023 | HUSQVARNA FE 501 2020 2021 2022 2023 | HUSQVARNA FE 501 S 2022 2023 | HUSQVARNA TE 150I 2020 2021 2022 2023 | HUSQVARNA TE 250I 2020 2021 2022 2023 | HUSQVARNA TE 300I 2020 2021 2022 2023

**PLASTIC KIT**  
0023539



0023539.030



0023539.031



0023539.040



0023539.090



0023539.553



0023539.553.020



0023539.553.023

**APPLICATIONS**

HUSQVARNA TC 65 2017 2018 2019 2020 2021 2022 2023

PLASTIC KIT  
0023482



0023482.030



0023482.031



0023482.072



0023482.092



0023482.132



0023482.070



0023482.090



0023482.237



0023482.553



0023482.553.020



0023482.553.022

APPLICATIONS

HUSQVARNA FC 250 2019 2020 2021 2022 | HUSQVARNA FC 350 2019 2020 2021 2022 | HUSQVARNA FC 450 2019 2020 2021 2022 | HUSQVARNA FX 350 2020 2021 2022 | HUSQVARNA FX 450 2020 2021 2022 | HUSQVARNA TC 125 2019 2020 2021 2022 | HUSQVARNA TC 250 2019 2020 2021 2022 | HUSQVARNA TX 300 2020 2021 2022



**PLASTIC KIT**  
0023055



0023055.030



0023055.031



0023055.040



0023055.090



0023055.553



0023055.553.020



0023055.553.023

**APPLICATIONS**

HUSQVARNA TC 85 2018 2019 2020 2021 2022 2023 2024

**PLASTIC KIT**  
0022807



0022807.040



0022807.090

**APPLICATIONS**

HUSQVARNA TC 85 2014 2015 2016 2017

PLASTIC KIT  
0022374



0022374.030



0022374.040



0022374.070



0022374.090



0022374.553



0022374.553.018



0022374.553.019

## FEATURES

All Acerbis replica plastic has the original factory shape of the OEM plastic of each specific model.

## APPLICATIONS

HUSQVARNA FE 250 2017 2018 2019 | HUSQVARNA FE 350 2017 2018 2019 | HUSQVARNA FE 450 2017 2018 2019 | HUSQVARNA FE 501 2017 2018 2019 | HUSQVARNA TE 250 2017 | HUSQVARNA TE 250I 2018 2019 | HUSQVARNA TE 300 2017 | HUSQVARNA TE 300I 2018 2019 | HUSQVARNA TX 125 2017 2018 2019

**PLASTIC KIT**  
0021830



0021830.030



0021830.041



0021830.090



0021830.553



0021830.553.017



0021830.553.018

**APPLICATIONS**

HUSQVARNA FC 250 2016 2017 2018 | HUSQVARNA FC 350 2016 2017 2018 | HUSQVARNA FC 450 2016 2017 2018 | HUSQVARNA TC 125 2016 2017 2018 | HUSQVARNA TC 250 2017 2018 | HUSQVARNA TC 300 2016 2017 2018

PLASTIC KIT  
0017704



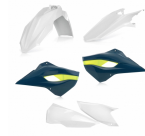
0017704.090



0017704.553



0017704.553.015



0017704.553.016

APPLICATIONS

HUSQVARNA FC 250 2014 2015 | HUSQVARNA FC 350 2014 2015 | HUSQVARNA FC 450 2014 2015 | HUSQVARNA TC 125 2014 2015 |  
HUSQVARNA TC 250 2014 2015 2016

PLASTIC KIT  
0017703



0017703.090



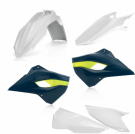
0017703.090.015



0017703.553



0017703.553.015



0017703.553.016

APPLICATIONS

HUSABERG FE 250 2013 2014 | HUSABERG FE 350 2013 2014 | HUSABERG FE 450 2013 2014 | HUSABERG TE 125 2013 2014 | HUSABERG TE 250 2013 2014 | HUSABERG TE 300 2013 2014 | HUSQVARNA FE 250 2014 2015 2016 | HUSQVARNA FE 350 2014 2015 2016 | HUSQVARNA FE 450 2014 2015 2016 | HUSQVARNA FE 501 2014 2015 2016 | HUSQVARNA TE 125 2014 2015 2016 | HUSQVARNA TE 250 2014 2015 2016 | HUSQVARNA TE 300 2014 2015 2016

**FULL PLASTIC KIT FOR  
HUSQVARNA  
0026855**



0026855.031



0026855.090



0026855.553.024



0026855.553.025

**APPLICATIONS**

HUSQVARNA FE 250 2024 2025 | HUSQVARNA FE 350 2024 2025 | HUSQVARNA FE 350 PRO 2024 2025 | HUSQVARNA FE 350 S 2024 2025 |  
HUSQVARNA FE 450 2024 2025 | HUSQVARNA FE 501 2024 2025 | HUSQVARNA FE 501 S 2024 2025 | HUSQVARNA TE 125 2024 2025 |  
HUSQVARNA TE 150 2024 2025 | HUSQVARNA TE 250 2024 2025 | HUSQVARNA TE 300 2024 2025 | HUSQVARNA TE 300 PRO 2024 2025

**HUSQVARNA / FULL PLASTIC KIT**  
**FULL PLASTIC KIT COMPATIBLE FOR HUSQVARNA**



**FULL PLASTIC KIT  
COMPATIBLE FOR  
HUSQVARNA**  
0026851



0026851.031



0026851.090



0026851.553.023



0026851.553.024

**APPLICATIONS**

HUSQVARNA FC 250 2023 2024 | HUSQVARNA FC 350 2023 2024 | HUSQVARNA FC 450 2023 2024 | HUSQVARNA FX 350 2023 2024 |  
HUSQVARNA TC 125 2023 2024 | HUSQVARNA TC 250 2023 2024 | HUSQVARNA TX 300 2023 2024



FULL PLASTIC KIT FOR  
HUSQVARNA  
0024051



0024051.031



0024051.090



0024051.553



0024051.553.022



0024051.553.023

APPLICATIONS

HUSQVARNA FE 250 2020 2021 2022 2023 | HUSQVARNA FE 350 2020 2021 2022 2023 | HUSQVARNA FE 350 S 2022 2023 | HUSQVARNA FE 450 2020 2021 2022 2023 | HUSQVARNA FE 501 2020 2021 2022 2023 | HUSQVARNA FE 501 S 2022 2023 | HUSQVARNA TE 150I 2020 2021 2022 2023 | HUSQVARNA TE 250I 2020 2021 2022 2023 | HUSQVARNA TE 300I 2020 2021 2022 2023

PRODUCTS RELATED



0024302  
HEADLIGHT MASK VSL FOR  
HUSQVARNA

□ 030



0021833  
ACERBIS CHAIN GUIDE/SLIDER  
KIT FOR KTM/HUSQVARNA/GAS  
GAS

■ 010

■ 090



0024296  
X-FUTURE HANDGUARDS

■ 203

■ 209

■ 232

■ 234

■ 237

■ 239

■ 241

■ 245

■ 251

■ 273

■ 279

■ 313

■ 315

■ 319

■ 343

■ 349

■ 371

■ 377

■ 848

■ 879

**FULL PLASTIC KIT FOR  
HUSQVARNA**  
0023538



0023538.030



0023538.031



0023538.040



0023538.090



0023538.553



0023538.553.020



0023538.553.023

**APPLICATIONS**

HUSQVARNA TC 65 2017 2018 2019 2020 2021 2022 2023

FULL PLASTIC KIT FOR  
HUSQVARNA  
0023481



0023481.030



0023481.031



0023481.072



0023481.092



0023481.132



0023481.070



0023481.083



0023481.090



0023481.237



0023481.315



0023481.553



0023481.553.020



0023481.553.022

APPLICATIONS

HUSQVARNA FC 250 2019 2020 2021 2022 | HUSQVARNA FC 350 2019 2020 2021 2022 | HUSQVARNA FC 450 2019 2020 2021 2022 |  
HUSQVARNA FX 350 2020 2021 2022 | HUSQVARNA FX 450 2020 2021 2022 | HUSQVARNA TC 125 2019 2020 2021 2022 | HUSQVARNA TC  
250 2019 2020 2021 2022 | HUSQVARNA TX 300 2020 2021 2022

FULL PLASTIC KIT FOR  
HUSQVARNA

0023596



0023596.030



0023596.040



0023596.070



0023596.090



0023596.553

FEATURES

APPLICATION:

HUSQVARNA FE 250 2017 2018 2019  
HUSQVARNA FE 350 2017 2018 2019  
HUSQVARNA FE 450 2017 2018 2019  
HUSQVARNA FE 501 2017 2018 2019

HUSQVARNA TE 250 2017  
HUSQVARNA TE 250I 2018 2019  
HUSQVARNA TE 300 2017  
HUSQVARNA TE 300I 2018 2019  
HUSQVARNA TX 125 2017 2018 2019

**FULL PLASTIC KIT FOR  
HUSQVARNA**  
0023056



0023056.030



0023056.031



0023056.040



0023056.090



0023056.553



0023056.553.020



0023056.553.023

**APPLICATIONS**

HUSQVARNA TC 85 2018 2019 2020 2021 2022 2023 2024

**FULL PLASTIC KIT FOR  
HUSQVARNA**  
0022808



0022808.040



0022808.090

**APPLICATIONS**

HUSQVARNA TC 85 2014 2015 2016 2017

FULL PLASTIC KIT FOR  
HUSQVARNA  
0022375



0022375.030



0022375.040



0022375.070



0022375.090



0022375.318



0022375.553



0022375.553.018



0022375.553.019

APPLICATIONS

HUSQVARNA FE 250 2017 2018 2019 | HUSQVARNA FE 350 2017 2018 2019 | HUSQVARNA FE 450 2017 2018 2019 | HUSQVARNA FE 501  
2017 2018 2019 | HUSQVARNA TE 250 2017 | HUSQVARNA TE 250I 2018 2019 | HUSQVARNA TE 300 2017 | HUSQVARNA TE 300I 2018 2019 |  
HUSQVARNA TX 125 2017 2018 2019



**FULL PLASTIC KIT FOR  
HUSQVARNA**  
0021937



0021937.090



0021937.553

**FULL PLASTIC KIT FOR  
HUSQVARNA**  
0021831



0021831.030



0021831.090



0021831.315



0021831.318



0021831.325



0021831.553



0021831.553.017



0021831.553.018

**APPLICATIONS**

HUSQVARNA FC 250 2016 2017 2018 | HUSQVARNA FC 350 2016 2017 2018 | HUSQVARNA FC 450 2016 2017 2018 | HUSQVARNA TC 125 2016 2017 2018 | HUSQVARNA TC 250 2017 2018 | HUSQVARNA TC 300 2016 2017 2018

**FULL PLASTIC KIT FOR  
HUSQVARNA**  
0021819



0021819.090



0021819.318



0021819.553

**APPLICATIONS**

HUSQVARNA FE 250 2016 | HUSQVARNA FE 350 2016 | HUSQVARNA FE 450 2016 | HUSQVARNA FE 501 2016 | HUSQVARNA TE 125 2016 |  
HUSQVARNA TE 250 2016 | HUSQVARNA TE 300 2016

**FULL PLASTIC KIT FOR  
HUSQVARNA**  
0017706



0017706.090



0017706.090.015



0017706.553



0017706.553.015



0017706.553.016

**APPLICATIONS**

HUSQVARNA FC 250 2014 2015 | HUSQVARNA FC 350 2014 2015 | HUSQVARNA FC 450 2014 2015 | HUSQVARNA TC 125 2014 2015 |  
HUSQVARNA TC 250 2014 2015 2016

FULL PLASTIC KIT FOR  
HUSQVARNA  
0017705



0017705.090



0017705.090.015



0017705.553



0017705.553.015

APPLICATIONS

HUSQVARNA FE 250 2014 2015 | HUSQVARNA FE 350 2014 2015 | HUSQVARNA FE 450 2014 2015 | HUSQVARNA FE 501 2014 2015 |  
HUSQVARNA TE 125 2014 2015 | HUSQVARNA TE 250 2014 2015 | HUSQVARNA TE 300 2014 2015



**REPLICA CHAIN GUIDE**  
**0025789**



0025789.090

**APPLICATIONS**

GAS GAS MC 85 2021 2022 2023 2024 | HUSQVARNA FE 250 2014 2015 2016 2017 2018 2019 2020 2021 2022 2023 | HUSQVARNA FE 350 2014 2015 2016 2017 2018 2019 2020 2021 2022 2023 | HUSQVARNA FE 350 PRO 2024 2025 | HUSQVARNA FE 350 S 2022 2023 | HUSQVARNA FE 450 2014 2015 2016 2017 2018 2019 2020 2021 2022 2023 | HUSQVARNA FE 501 2014 2015 2016 2017 2018 2019 2020 2021 2022 2023 | HUSQVARNA FE 501 S 2022 2023 | HUSQVARNA TC 85 2015 2016 2017 2018 2019 2020 2021 2022 2023 2024 | HUSQVARNA TE 125 2014 2015 2016 | HUSQVARNA TE 150i 2020 2021 2022 2023 | HUSQVARNA TE 250 2014 2015 2016 2017 | HUSQVARNA TE 250i 2018 2019 2020 2021 2022 2023 | HUSQVARNA TE 300 2014 2015 2016 2017 | HUSQVARNA TE 300i 2018 2019 2020 2021 2022 2023 | KTM EXC 125 2014 2015 2016 | KTM EXC 150 TPI 2020 2021 2022 2023 | KTM EXC 200 2014 2015 2016 2017 2018 | KTM EXC 250 2014 2015 2016 2017 | KTM EXC 250 TPI 2017 2018 2019 2020 2021 2022 2023 | KTM EXC 300 2014 2016 2017 | KTM EXC 300 TPI 2018 2019 2020 2021 2022 2023 | KTM EXC-F 250 2014 2015 2016 2017 2018 2019 2020 2021 2022 2023 | KTM EXC-F 350 2014 2015 2016 2017 2018 2019 2020 2021 2022 2023 | KTM EXC-F 450 2014 2015 2016 2017 2018 2019 2020 2021 2022 2023 | KTM SX 85 2015 2016 2017 2018 2019 2020 2021 2022 2023 2024 | KTM XC-W 125 2017 2018 2019 | KTM XC-W 150 TPI 2019 2020 2021 2022 2023 | KTM XC-W 250 TPI 2019 2020 2021 2022 2023 | KTM XC-W 300 TPI 2019 2020 2021 2022 2023 | KTM XCF-W 350 2020 2021 2022 2023 | KTM XCF-W 450 2023 | KTM XCF-W 500 2020 2021 2022 2023

PRODUCTS RELATED



0022933  
FULL PLASTIC KIT FOR KTM

- 011.016    □ 030
- 031    ■ 072
- 090    ■ 092
- 110    ■ 132
- ▨ 553    ■ 553.019
- 553.020    ■ 553.021
- 553.023



**CHAIN SLIDER**  
**0025457**



0025457.090

**APPLICATIONS**

GAS GAS EC 250 2024 | GAS GAS EC 250 F 2024 | GAS GAS EC 300 2024 | GAS GAS EC 350 F 2024 | GAS GAS EC 450 F 2024 | GAS GAS EC 500 F 2024 | GAS GAS EX 250 2024 | GAS GAS EX 250 F 2024 | GAS GAS EX 300 2024 | GAS GAS EX 350 F 2024 | GAS GAS EX 450 F 2024 | GAS GAS MC 125 2024 | GAS GAS MC 250 2024 | GAS GAS MC 250 F 2024 | GAS GAS MC 350 F 2024 | GAS GAS MC 450 F 2024 | HUSQVARNA FC 250 2023 2024 | HUSQVARNA FC 350 2023 2024 | HUSQVARNA FC 450 2023 2024 | HUSQVARNA FE 250 2024 | HUSQVARNA FE 350 2024 | HUSQVARNA FE 350 PRO 2024 | HUSQVARNA FE 350 S 2024 | HUSQVARNA FE 350 W 2024 | HUSQVARNA FE 450 2024 | HUSQVARNA FE 501 2024 | HUSQVARNA FE 501 S 2024 | HUSQVARNA FE 501 W 2024 | HUSQVARNA FX 350 2023 2024 | HUSQVARNA FX 450 2023 2024 | HUSQVARNA TC 125 2023 2024 | HUSQVARNA TC 250 2023 2024 | HUSQVARNA TE 150 2024 | HUSQVARNA TE 250 2024 | HUSQVARNA TE 300 2024 | HUSQVARNA TE 300 PRO 2024 | HUSQVARNA TX 300 2023 2024 | KTM EXC 150 2024 | KTM EXC 250 2024 | KTM EXC 300 2024 | KTM EXC-F 250 2024 | KTM EXC-F 350 2024 | KTM EXC-F 450 2024 | KTM EXC-F 500 2024 | KTM SX 125 2023 2024 | KTM SX 250 2023 2024 | KTM SX 300 2023 2024 | KTM SX-F 250 2023 2024 | KTM SX-F 350 2023 2024 | KTM SX-F 450 2023 2024 | KTM XC 125 2023 2024 | KTM XC 250 2023 2024 | KTM XC 300 2023 2024 | KTM XC-F 250 2023 2024 | KTM XC-F 350 2023 2024 | KTM XC-F 450 2023 2024 | KTM XC-W 150 2024 | KTM XC-W 250 2024 | KTM XC-W 300 2024 | KTM XCF-W 450 2024 | KTM XW-F 350 2024 | KTM XW-F 500 2024





**REPLICA CHAIN GUIDE**  
**0025458**



0025458.090

**APPLICATIONS**

GAS GAS EC 125 2025 | GAS GAS EC 250 2024 2025 | GAS GAS EC 250 F 2024 2025 | GAS GAS EC 300 2024 2025 | GAS GAS EC 350 F 2024 2025 | GAS GAS EC 450 F 2024 2025 | GAS GAS EC 500 F 2024 2025 | GAS GAS EX 250 2024 2025 | GAS GAS EX 250 F 2024 2025 | GAS GAS EX 300 2024 2025 | GAS GAS EX 350 F 2024 2025 | GAS GAS EX 450 F 2024 2025 | GAS GAS MC 125 2024 2025 | GAS GAS MC 250 2024 2025 | GAS GAS MC 250 F 2024 2025 | GAS GAS MC 350 F 2024 2025 | GAS GAS MC 450 F 2024 2025 | HUSQVARNA FC 250 2023 2024 2025 | HUSQVARNA FC 350 2023 2024 2025 | HUSQVARNA FC 450 2023 2024 2025 | HUSQVARNA FE 250 2024 2025 | HUSQVARNA FE 350 2024 2025 | HUSQVARNA FE 350 PRO 2024 2025 | HUSQVARNA FE 350 S 2024 2025 | HUSQVARNA FE 350 W 2024 | HUSQVARNA FE 450 2024 2025 | HUSQVARNA FE 501 2024 2025 | HUSQVARNA FE 501 S 2024 2025 | HUSQVARNA FE 501 W 2024 | HUSQVARNA FX 350 2023 2024 2025 | HUSQVARNA FX 450 2023 2024 2025 | HUSQVARNA TC 125 2023 2024 2025 | HUSQVARNA TC 150 2025 | HUSQVARNA TC 250 2023 2024 2025 | HUSQVARNA TE 150 2024 2025 | HUSQVARNA TE 250 2024 2025 | HUSQVARNA TE 300 2024 2025 | HUSQVARNA TE 300 PRO 2024 2025 | HUSQVARNA TX 300 2023 2024 2025 | KTM EXC 150 2024 2025 | KTM EXC 250 2024 2025 | KTM EXC 300 2024 2025 | KTM EXC-F 250 2024 2025 | KTM EXC-F 350 2024 2025 | KTM EXC-F 450 2024 2025 | KTM EXC-F 500 2024 2025 | KTM SX 125 2023 2024 2025 | KTM SX 150 2025 | KTM SX 250 2023 2024 2025 | KTM SX 300 2023 2024 2025 | KTM SX-F 250 2023 2024 2025 | KTM SX-F 350 2023 2024 2025 | KTM SX-F 450 2023 2024 2025 | KTM XC 125 2023 2024 2025 | KTM XC 250 2023 2024 2025 | KTM XC 300 2023 2024 2025 | KTM XC-F 250 2023 2024 2025 | KTM XC-F 350 2023 2024 2025 | KTM XC-F 450 2023 2024 2025 | KTM XC-W 125 2025 | KTM XC-W 150 2024 2025 | KTM XC-W 250 2024 2025 | KTM XC-W 300 2024 2025 | KTM XCF-W 450 2024 2025 | KTM XW-F 350 2024 2025 | KTM XW-F 500 2024 2025

**REPLICA CHAIN GUIDE**  
**0012211**



0012211.090

**APPLICATIONS**

HUSABERG FE 250 2013 2014 | HUSABERG FE 350 2013 2014 | HUSABERG FE 450 2013 2014 | HUSABERG TE 125 2009 2010 2011 2012 2013 2014 | HUSABERG TE 250 2013 2014 | HUSABERG TE 300 2013 2014 | KTM EXC 125 2008 2009 2010 2011 2012 2013 | KTM EXC 200 2008 2009 2010 2011 2012 2013 | KTM EXC 250 2008 2009 2010 2011 2012 2013 | KTM EXC 300 2008 2009 2010 2011 2012 2013 | KTM EXC 380 2T 2008 2009 2010 2011 2012 2013 | KTM EXC-F 250 2008 2009 2010 2011 2012 2013 | KTM EXC-F 350 2008 2009 2010 2011 2012 2013 | KTM EXC-F 400 2008 2009 2010 2011 2012 2013 | KTM EXC-F 450 2008 2009 2010 2011 2012 2013 | KTM EXC-F 500 2007 2008 2009 2010 2011 2012 2013 | KTM EXC-F 520 2008 2009 2010 2011 2012 2013 | KTM SX 125 2007 | KTM SX 150 2007 | KTM SX 200 2007 | KTM SX 250 2007 | KTM SX 85 2007 | KTM SX-F 250 2007 | KTM SX-F 350 2007 | KTM SX-F 450 2007 | KTM SX-F 505 2007

**CHAIN GUIDE FOR  
KTM/HUSQVARNA**  
**0015914**



0015914.090

**APPLICATIONS**

HUSQVARNA FC 250 2015 2016 2017 2018 2019 2020 2021 2022 | HUSQVARNA FC 350 2015 2016 2017 2018 2019 2020 2021 2022 | HUSQVARNA FC 450 2015 2016 2017 2018 2019 2020 2021 2022 | HUSQVARNA FX 350 2020 2021 2022 2023 2024 | HUSQVARNA FX 450 2020 2021 2022 | HUSQVARNA TC 125 2015 2016 2017 2018 2019 2020 2021 2022 | HUSQVARNA TC 250 2015 2016 2017 2018 2019 2020 2021 2022 | HUSQVARNA TX 300 2020 2021 2022 | KTM SX 125 2008 2009 2010 2011 2012 2013 2014 2015 2016 2017 2018 2019 2020 2021 2022 2023 | KTM SX 150 2011 2012 2013 2014 2015 2016 2017 2018 2019 | KTM SX 200 2011 2012 2013 2014 2015 2016 2017 | KTM SX 250 2008 2009 2010 2011 2012 2013 2014 2015 2016 2017 2018 2019 2020 2021 2022 | KTM SX-F 250 2008 2009 2010 2011 2012 2013 2014 2015 2016 2017 2018 2019 2020 2021 2022 | KTM SX-F 350 2008 2009 2010 2011 2012 2013 2014 2015 2016 2017 2018 2019 2020 2021 2022 | KTM SX-F 450 2008 2009 2010 2011 2012 2013 2014 2015 2016 2017 2018 2019 2020 2021 2022 | KTM SX-F 505 2008 2009 2010 2011 2012 2013 2014 2015 2016 2017 2018 | KTM XC 125 2020 2021 2022 | KTM XC 250 2019 2023 2024 | KTM XC 250 TPI 2020 2021 2022 | KTM XC 300 2019 | KTM XC 300 TPI 2020 2021 2022 | KTM XC-F 250 2019 2020 2021 2022 | KTM XC-F 350 2019 2020 2021 2022 2024 | KTM XC-F 450 2019 2020 2021 2022

**MUD FLAP**  
**0025456**



0025456.090

## **APPLICATIONS**

HUSQVARNA FC 250 2023 2024 | HUSQVARNA FC 350 2023 2024 | HUSQVARNA FC 450 2023 2024 | HUSQVARNA FX 350 2023 2024 | HUSQVARNA FX 450 2023 2024 | HUSQVARNA TC 125 2023 2024 | HUSQVARNA TC 250 2023 2024 | HUSQVARNA TX 300 2023 2024 | KTM SX 125 2023 2024 | KTM SX 250 2023 2024 | KTM SX 300 2023 2024 | KTM SX-F 250 2023 2024 | KTM SX-F 350 2023 2024 | KTM SX-F 450 2023 2024 | KTM XC 125 2023 2024 | KTM XC 250 2023 2024 | KTM XC 300 2023 2024 | KTM XC-F 250 2023 2024 | KTM XC-F 350 2023 2024 | KTM XC-F 450 2023 2024

**MUD FLAP**  
0025311



0025311.090

## APPLICATIONS

GAS GAS MC 65 2021 2022 2023 | HUSQVARNA TC 65 2017 2018 2019 2020 2021 2022 2023 | KTM SX 65 2016 2017 2018 2019 2020 2021 2022 2023