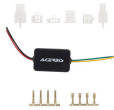
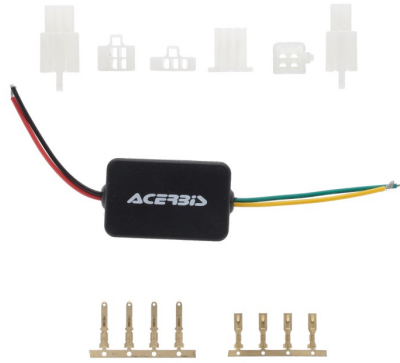


## VSL-CURRENT RECTIFIER 0026569



0026569.090

## FEATURES

AC to DC 12V - 15A adapter, for the installation of Acerbis VSL masks to motorcycles with carburetor  
Highly integrated SMD components for high stability and reliability.  
Small size, easy to install, with over-voltage, over-current and short-circuit protection.  
IP67 waterproof and dustproof  
Plastic shell, lightweight and safe.

**SPECIFICATIONS**  
Shell material: Plastic  
Input voltage: AC 10-30V  
Output voltage: DC12V±0.2V  
Output current: 15A  
Output power: 180W  
Working temperature: -40~80?  
Conversion efficiency: 92%~96%  
Static power consumption: 10~15ma  
Dimensions: mm./2.17 X 1.38 X 0.79 in.  
Weight: 32g

## APPLICATIONS

BETA RR 125 2T RACING 2021 2022 2023 2024 | BETA RR 250 2T 2021 2022 2023 2024 | BETA RR 250 2T RACING 2021 2022 2023 2024 |  
BETA RR 300 2T 2021 2022 2023 2024 | BETA RR 300 2T RACING 2021 2022 2023 2024

PRODUCTS RELATED



0025033  
HEADLIGHT MASK VSL FOR  
BETA

■ 110



0024471  
HEADLIGHT MASK VSL FIT ALL

□ 030

■ 090

**RASPA MUD SCRAPER  
+ BRUSCIA CHAIN  
BRUSH**  
0026753



0026753.318

**FEATURES**

**Raspa:**  
Scraper that ensures easy removal of mud from the bike.  
Handle with motorcycle rubber grip for greater ergonomics.  
Its shape is designed to allow easy access to curved parts, such as the fender

**Bruscia:**  
Brush for cleaning chains and transmission assembly.  
Removes sand, mud and dirt.  
Suitable for wet and dry use.

**PRODUCTS RELATED**



0026240  
RASPA MUD SCRAPER

■ 318



0026241  
BRUSCIA CHAIN BRUSH

■ 318

REAR SHOCK SOCK  
COVER  
0026592



FEATURES

Rear shock cover, protects from dust, mud and debris.  
Elastic fabric, fits all Japanese motorcycles.  
Acerbis logo printed on the front and on the elastic band.

The installation requires the disassembly of the shock absorber from the motorcycle.  
Weight: 20g

PRODUCT DETAILS

95% Polyestere | 4% Silicone | 1% Other

Made In: China

APPLICATIONS

BETA RR 125 2T RACING 2025 | BETA RR 200 2T RACING 2025 | BETA RR 250 2T RACING 2025 | BETA RR 300 2T RACING 2025 | BETA RR 350 4T RACING 2025 | BETA RR 390 4T RACING 2025 | BETA RR 480 4T RACING 2025 | BETA RR X-PRO 125 2T 2025 | BETA RR X-PRO 200 2T 2025 | BETA RR X-PRO 250 2T 2025 | BETA RR X-PRO 300 2T 2025 | BETA RR X-PRO 350 4T 2025 | BETA RR X-PRO 390 4T 2025 | BETA RR X-PRO 430 4T 2025 | BETA RR X-PRO 480 4T 2025 | FANTIC XE 125 2025 | FANTIC XE 300 2025 | FANTIC XEF 250 2025 | FANTIC XEF 310 2025 | FANTIC XEF 450 2025 | FANTIC XX 125 2025 | FANTIC XX 250 2025 | FANTIC XXF 250 2025 | FANTIC XXF 450 2025 | GAS GAS EC 125 2025 | GAS GAS EC 250 2025 | GAS GAS EC 300 2025 | GAS GAS MC 250 F 2025 | GAS GAS MC 350 F 2025 | GAS GAS MC 450 F 2025 | HONDA CRF 250 R 2025 | HONDA CRF 250 R-WE 2025 | HONDA CRF 250 RX 2025 | HONDA CRF 250 RX ENDURO 2025 | HONDA CRF 250 RX ENDURO SPECIAL 2025 | HONDA CRF 300 RX 2025 | HONDA CRF 300 RX ENDURO 2025 | HONDA CRF 300 RX ENDURO SPECIAL 2025 | HONDA CRF 450 R 2025 | HONDA CRF 450 R-WE 2025 | HONDA CRF 450 RX 2025 | KAWASAKI KX 250 2025 | KAWASAKI KX 250 X 2025 | KAWASAKI KX 300 X ENDURO 2025 | KAWASAKI KX 450 2025 | KAWASAKI KX 450 X 2025 | SHERCO 250 SE FACTORY 2025 | SHERCO 250 SEF FACTORY 2025 | SHERCO 300 SE FACTORY 2025 | SHERCO 300 SEF FACTORY 2025 | SUZUKI RM-Z 250 2025 | SUZUKI RM-Z 450 2025 | TRIUMPH TF 250 X 2025 | TRIUMPH TF 450-RC 2025 | YAMAHA WR 250 F 2025 | YAMAHA WR 450 F 2025 | YAMAHA YZ 125 2025 | YAMAHA YZ 250 2025 | YAMAHA YZ 250 F 2025 | YAMAHA YZ 250 FX 2025 | YAMAHA YZ 450 F 2025 | YAMAHA YZ 450 FX 2025

**NEW PRODUCTS / NEW PRODUCTS**  
**REAR SHOCK SOCK COVER**



REAR SHOCK SOCK  
COVER K  
0026591



0026591.010



0026591.090



0026591.110

## FEATURES

Rear shock cover, protects from dust, mud and debris.  
Elastic fabric, fits all KTM, HUSQVARNA, GASGAS models.  
Acerbis logo printed on the front and on the elastic band.

The installation requires the disassembly of the shock absorber from the motorcycle.  
Weight: 20g

## PRODUCT DETAILS

90% Polyestere | 2% Silicone | 6% SBR | 1% Spandex | 1% Others

Made In: China

## APPLICATIONS

GAS GAS EC 250 F 2025 | GAS GAS EC 350 F 2025 | GAS GAS EC 450 F 2025 | GAS GAS EX 250 2025 | GAS GAS EX 250 F 2025 | GAS GAS EX 300 2025 | GAS GAS EX 350 F 2025 | GAS GAS EX 450 F 2025 | GAS GAS MC 125 2025 | GAS GAS MC 250 2025



**TIREM-DRE BELT**  
0026474



0026474.090

## FEATURES

Ultra-durable Nylon construction  
Universal strap  
Made for lifting the motorcycle in cases of extreme difficulty  
Easy installation on motorcycles , only if equipped with attached license plate holder

Strap with adjustable lengths  
Strong and easy to grip

## PRODUCT DETAILS

Nylon 50% | Rubber 15% | Zinc Alloy 25% | Polyester 8% | Others 2%

Made In: China

## APPLICATIONS

HUSQVARNA FE 350 S 2024 2025 | HUSQVARNA FE 501 S 2024 2025 | HUSQVARNA TE 300 PRO 2024 2025

**RAMPA**  
0026239



0026239.020

## FEATURES

Folding ramp for loading and unloading motorcycles  
Lightweight, maneuverable, durable and easy to use.  
The 22cm width allows easy loading of any motorcycle up to 210kg in running order.  
When closed it occupies 95cm in height and 12cm in thickness.  
Design designed for good grip, limiting the risk of slipping even in conditions where surfaces are not totally dry.

It has a mounting kit that allows a second ramp to be placed side by side, so that its width can be doubled, for greater convenience in maneuvering.  
There is also a strap in the kit to allow the ramp to be secured and prevent any shifting during loading/unloading maneuvers.  
Dimensions: length 190cm; width 22cm; thickness 6cm; folded length 95cm  
Weight: 5.5kg

## PRODUCT DETAILS

98% Inox steel | 2% Other

Made In: China





**BRUSCIA CHAIN  
BRUSH**  
0026241



**FEATURES**

Brush for cleaning chains and transmission assembly.  
Removes sand, mud and dirt.

Suitable for wet and dry use.

**PRODUCT DETAILS**

100% Plastic

Made In: China

**PRODUCTS RELATED**



0026753  
RASPA MUD SCRAPER +  
BRUSCIA CHAIN BRUSH

■ 318



## RASPA MUD SCRAPER

0026240



0026240.318

### FEATURES

Scraper that ensures easy removal of mud from the bike.  
Handle with motorcycle rubber grip for greater ergonomics.

Its shape is designed to allow easy access to curved parts, such as the fender

### PRODUCT DETAILS

60% Plastic | 40% Rubber

Made In: China

### PRODUCTS RELATED



0026753  
RASPA MUD SCRAPER +  
BRUSCIA CHAIN BRUSH

■ 318

**DONUTS RING-ONE**  
0026076



0026076.090

**FEATURES**

Coated neoprene ring best protects thumbs from blistering while riding.

**PRODUCTS RELATED**



0025423  
HANDLE COVER MANETA

■ 090

**HANGER ACERBIS SET  
10 PCS  
0026028**



0026028.090

DASH REV COUNTER  
FOHDEGIR  
0025498



0025498.090

## FEATURES

Universal tachometer with RPM reader, launch control and shift warning functionality

LEDs allow you to read revolutions per minute (RPM) in real time, giving you full control

The Launch Control function ensures the rider gets the perfect start, thanks to LEDs that indicate the ideal moment to start at maximum power and control, depending on one's preferences

The shift warning function uses LEDs to signal the rider the right time to shift gears and release full engine power. The LEDs will flash at the desired rpm

Equipped with a convenient button for adjusting the necessary settings, which can be positioned on the handlebars

Front guard integrated into the aluminum support base, with the protective function from bumps and debris

Water-resistant

Applies to the front of the fender, via an aluminum bracket and screws in the mounting kit

Can be applied to any fender, with direct power supply to the battery. RPM reading is via electrical pulses detectable from the spark plug power cable

Printed logo on tachometer and lasered on bracket

## PRODUCT DETAILS

PVC: 29 | 304 stainless steel: 14 | Epoxy Resin: 10 | Aluminium: 9 | ABS: 7 | Organic silicone: 6 | Copper: 5 | Methyl vinyl silicone rubber: 5 | PBT: 4 | Fiberglass: 4 | Others: 2 | PP: 3 | PMMA: 1 | PBS: 1

Made In: China

HANDLE COVER  
MANETA  
0025423



0025423.090

## FEATURES

Hand grip cover kit for transport and "donuts" thumb protection. Maneta is an innovative accessory that, thanks to its neoprene construction, fits all types of handlebars. The neoprene grip cover, prevents the grip from getting dirty during transportation and maintenance work on the motorcycle.

The outer TPR protector, allows the knob to be protected from rubbing during transport. Coated neoprene ring best protects thumbs from blistering while riding. Velcro closure for easy donning  
Weight: 100g

## PRODUCT DETAILS

40% Neoprene | 25% Nylon | 20% Polyestere | 12% PVC | 3% Others

Made In: China

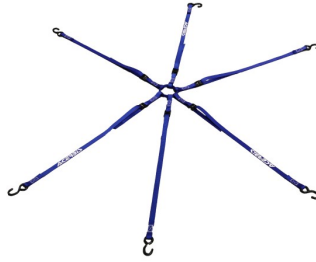
## PRODUCTS RELATED



0026076  
DONUTS RING-ONE

■ 090

**TIE DOWN RAGNO**  
0025275



0025275.040



0025275.090



0025275.110

**FEATURES**

6 arm retaining strap  
6 straps with 980mm length / 25mm width and hook  
S-hooks in steel with PVC coating for protection against scratches

Maximum load 100kg / 220 Lb

**PRODUCT DETAILS**

POLYESTER 92,00% | STEEL 8,00%

Made In: Taiwan, Province of China

## EVO WATER BOTTLE

0022923



0022923.060

### FEATURES

0,75 lt water bottle in high-quality PE for food use

Ergonomic grip  
Cap with one-way flow valve

### PRODUCT DETAILS

100% PE

Made In: Italy

### PRODUCTS RELATED



0022922  
EVO Water Bottle Carrier

■ 090

### SIZES

ONE SIZE 180



FLAME WORK LIGHT  
0025099



0025099.318

FEATURES

GENERAL DETAILS:

Portable lamp for mechanical, folding and rechargeable  
Adjustable light intensity, which allows you to meet the many lighting needs  
The previously chosen lighting level is stored until a new light setting is selected  
Made for motorcycle/bike maintenance  
Lamp equipped with a magnet, which allows the fixing of the lamp to ferrous surfaces, to provide lighting in times of need  
Hook hidden in the bottom of the light, utility for vertical suspension and convenient to hang on objects to be used for emergency road repairs, night work or multipurpose work

TECHNICAL DETAILS:

Closed lamp size: 150x48x39 mm  
Open lamp size: 270x48x39 mm

Weight : 157g

Led: 1x3w ( head ) + 5W COB LED ( side )  
Battery: 3.7V; 2000mAh; Li-ion rechargeable battery  
Full charge in 4 hours  
Usage time: 4.5 hours with maximum intensity head light (48 hours at low intensity) and 3 hours with maximum intensity side light (30 hours at low intensity)  
Lumens : 150 lumens with head light and 360 lumens with side light  
USB power cable included in the box  
Made of plastic material resistant to shocks and scratches  
Rubberized surface for maximum grip  
Equipped with a front and side light  
Hook for vertical lamp suspension  
Multi angle led adjustment, with 270 degree rotation

PRODUCT DETAILS

ABS 85,00% | RUBBER 1,00% | ALLUMINIUM 2,00% | POLYCARBONATE 1,00% | PRINTED CIRCUIT BOAR 8,00% | OTHERS 3,00%

Made In: China



## RUMUR EARPLUGS

0025135



0025135.090

### FEATURES

Acoustic protection certified EN352-2: 2002 / CE1974  
Integrated acoustic filter  
Nominal diameter: 7-11 mm  
Transparent plastic container  
Suitable for on-road and off-road use  
Hypoallergenic material

Adapt to being worn for a long time and reused  
Easy and comfortable to use  
Maintained sound quality  
Compatible with intercoms  
H:20DB / M:15DB / L:11DB

### PRODUCT DETAILS

POLYETHYLENE 1 % | ABS 37 % | TPR 24 % | TPU 38 %

Made In: Netherlands



FUNNEL TANK  
0000022



0000022.040



0000022.131



0000022.010



0000022.030



0000022.110



0000022.070

PRODUCTS RELATED



0023860  
ELEVATOR BIKE STAND

■ 090

**OVERSHOES X-FOOT**  
0024549



0024549.090

**U-RET RADIATOR  
LOUVERS**  
0024804



0024804.090

**FEATURES**

Mesh for universal radiator louvers  
It allows to limit the infiltration of mud, sand and debris into the radiator that cause the engine to overheat

Quick and easy assembly  
Easy cleaning

**PRODUCT DETAILS**

POLYVINYL CHLORIDE 60% | POLYAMIDE 20% | POLYESTER 17% | OTHERS 3%

Made In: China

X-EXHAUST  
0024259



0024259.011.016



0024259.090

FEATURES

Easy to mount with adjustable metal clamps  
Resistant to high temperatures (Warning: the plastic must stay at least 8mm away from the exhaust)

Avoid contact of trousers and boots with hot exhaust  
Specific to OEM standard pipes

APPLICATIONS

BETA RR 350 4T 2013 2014 2015 2016 2017 2018 2019 2020 2021 2022 2023 2024 | BETA RR 390 4T 2015 2016 2017 2018 2019 2020 2021 2022 2023 2024 | BETA RR 430 4T 2015 2016 2017 2018 2019 2020 2021 2022 2023 2024 | BETA RR 480 4T 2015 2016 2017 2018 2019 2020 2021 2022 2023 2024 | BETA RR X-PRO 350 4T 2025 | BETA RR X-PRO 390 4T 2025 | BETA RR X-PRO 430 4T 2025 | BETA RR X-PRO 480 4T 2025 | GAS GAS EC 250 F 2021 2022 2023 2024 2025 | GAS GAS EC 350 F 2021 2022 2023 2024 2025 | GAS GAS EC 450 F 2024 2025 | GAS GAS EC 500 F 2024 2025 | GAS GAS EX 250 F 2021 2022 2023 2024 2025 | GAS GAS EX 350 F 2021 2022 2023 2024 2025 | GAS GAS EX 450 F 2021 2022 2023 2024 2025 | GAS GAS MC 250 F 2021 2022 2023 2024 2025 | GAS GAS MC 350 F 2022 2023 2024 2025 | GAS GAS MC 450 F 2021 2022 2023 2024 2025 | HONDA CRF 250 R 2022 2023 2024 2025 | HONDA CRF 250 R-WE 2025 | HONDA CRF 250 RX 2022 2023 2024 2025 | HONDA CRF 250 RX ENDURO 2022 2023 2024 2025 | HONDA CRF 250 RX ENDURO SPECIAL 2022 2023 2024 2025 | HONDA CRF 300 RX 2022 2023 2024 | HONDA CRF 300 RX ENDURO 2022 2023 2024 2025 | HONDA CRF 300 RX ENDURO SPECIAL 2022 2023 2024 2025 | HONDA CRF 450 R 2020 2021 2022 2023 2024 2025 | HONDA CRF 450 R-WE 2025 | HONDA CRF 450 RX 2020 | HUSQVARNA FC 250 2014 2015 2016 2017 2018 2019 2020 2021 2022 2023 2024 2025 | HUSQVARNA FC 350 2014 2015 2016 2017 2018 2019 2020 2021 2022 2023 2024 2025 | HUSQVARNA FE 250 2014 2015 2016 2017 2018 2019 2020 2021 2022 2023 2024 2025 | HUSQVARNA FE 350 2014 2015 2016 2017 2018 2019 2020 2021 2022 2023 2024 2025 | HUSQVARNA FE 350 PRO 2024 2025 | HUSQVARNA FE 350 S 2022 2023 2024 2025 | HUSQVARNA FE 350 W 2024 | HUSQVARNA FE 450 2025 | HUSQVARNA FE 501 2025 | HUSQVARNA FE 501 S 2022 2023 2024 2025 | HUSQVARNA FE 501 W 2024 | HUSQVARNA FX 350 2020 2021 2022 2025 | HUSQVARNA FX 450 2020 2021 2022 2025 | HUSQVARNA TX 300 2025 | KAWASAKI KX 450 2024 2025 | KAWASAKI KX 450 X 2024 2025 | KTM EXC-F 250 2012 2013 2014 2015 2016 2017 2018 2019 2020 2021 2022 2023 2024 2025 | KTM EXC-F 350 2012 2013 2014 2015 2016 2017 2018 2019 2020 2021 2022 2023 2024 2025 | KTM EXC-F 450 2012 2013 2014 2015 2016 2017 2018 2019 2020 2021 2022 2023 2024 2025 | KTM EXC-F 500 2012 2013 2014 2015 2016 2017 2018 2019 2020 2021 2022 2023 2024 2025 | KTM SX-F 250 2012 2013 2014 2015 2016 2017 2018 2019 2020 2021 2022 2023 2024 2025 | KTM SX-F 350 2012 2013 2014 2015 2016 2017 2018 2019 2020 2021 2022 2023 2024 2025 | KTM SX-F 450 2012 2013 2014 2015 2016 2017 2018 2019 2020 2021 2022 2023 2024 2025 | KTM XC-W 150 TPI 2019 2020 2021 2022 2023 | KTM XCF-W 450 2024 2025 | KTM XW-F 350 2024 2025 | KTM XW-F 500 2024 2025 | SHERCO 250 SEF-R 2012 2013 2014 2015 2016 2017 2018 2019 2020 2021 2022 2023 | SHERCO 300 SEF-R 2012 2013 2014 2015 2016 2017 2018 2019 2020 2021 2022 2023 | SHERCO 450 SEF-R 2012 2013 2014 2015 2016 2017 2018 2019 2020 2021 2022 2023



**SILENCER END CAP  
16-39MM  
0000364**



0000364.090

**PRODUCTS RELATED**



0023860  
ELEVATOR BIKE STAND

■ 090



**UHR BAR PAD**

**UHR BAR PAD**  
**0024501**



0024501.315

**FEATURES**

**MANUFACTURING AND DESIGN:**

With small compartment (75x50x40mm) for storing car keys; paper towels, etc. with zippered closure.

TPR cover with excellent resistance to tearing.

Made of foam material to reduce shock in case of impact

Extremely light

Velcro fastening

Permanent wash-proof graphics

Provided with a microcomputer with the following functions:

Watch

Stopwatch

Timer

n.3 hour counter: 1 cumulative (non-resettable) and 2 partial resettable

SVC: Scheduled maintenance alert

The hour counter is activated automatically by the vibrations of the engine when the motorcycle is moving.

Lock function to prevent the hour counter from being activated while the motorcycle is being transported

Waterproof -- IP68

No external power supply required - Battery included

**PRODUCT DETAILS**

COMPOSITION: | 70% Polyvinyl chloride | 26% ethylene-co-vinyl acetate | 4% Polyamide

Made In: China

## HOUR METER REROY

0024275



0024275.090

## FEATURES

### APPLICATION:

Can be mounted on cross / enduro / motard / ATV / moped / maxi enduro / trial

### DETAILS:

No power supply required

Simple installation with double-sided tape

Battery included

It turns on automatically with the engine's vibrations

2 hour-counter functions: 1 total + 1 partially resettable

Lock function to prevent its activation during transport

Waterproof IP68

Possibility to improve or reduce sensitivity

0.1 hour resolution

Wireless operation

**TA-TIRE BELT**  
**0023578**



0023578.090

**FEATURES**

Ultra-strong structure  
Semi-rigid handle made of non-slip material  
Made for extreme enduro use  
Easily installed via ring coupling without having to remove forks

Can be installed on all fork diameters

**PRODUCT DETAILS**

NYLON 29,00% | ZINC ALLOY 22,00% | RUBBER 10,00% | PVC 15,00% | OTHERS 5,00% | POLYPROPYLENE 19,00%

Made In: China



**X-TIRE COVER**  
**0023579**



0023579.090

**FEATURES**

**USE:** Wheel covers are used to avoid getting the bike's tyres dirty in the presence of mud and/or sand (for example after washing the bike), or before a competition at the starting grid, to avoid clogging the tyre treads, allowing the rider to have a fast start with the best possible grip and riding control.

**APPLICATION:** The kit consists of two Tyre covers: one for 21" front wheel and one for 18" and 19" rear wheel.

**FITTING:** The tyre covers can be quickly and intuitively fitted thanks to the Velcro fastener.

**MAINTENANCE AND WASHING:** by washing machine at 30 ° or high pressure washer (cold water)

**MATERIALS:** Polyester and PVC fabric resistant to wear and tear.

**PRODUCT DETAILS**

COMPOSITION: | 50% Polyester | 50% PVC

Made In: China

SILENCER PROTECTOR  
0022754



0022754.010



0022754.040



0022754.090



0022754.110

FEATURES

Silencer protection against bumps  
Circumference 200/400 mm  
Locking system through micrometric closing bands

Heat resistant

PRODUCT DETAILS

100% Silicone

Made In: Italy

PRODUCTS RELATED










0023479  
FULL PLASTIC KIT FOR KTM

-  011.016
-  030
-  031
-  070
-  072
-  083
-  090
-  092
-  132
-  204
-  207
-  232
-  243
-  297
-  313
-  319
-  553
-  553.020
-  553.021
-  553.022



0009846  
MX UNIKO VENTED  
HANDGUARDS

-  011.016
-  030
-  040
-  090
-  110
-  112
-  325

**BREMBO PUMP  
COVERS**  
0021680



0021680.010



0021680.011.016



0021680.030



0021680.041



0021680.060



0021680.090

**FEATURES**

- Polypropylene pump cover
- Protection for Brembo clutches and brake master cylinders manufactured after 2014
- Shock resistant and reduces wear of the plates
- O-Ring fixing
- **INSTALLATION DOESN'T REQUIRE LOOSENING ANY SCREWS**

**PROTECTOR**  
0008320



0008320.090



**TENAY BELT**  
0023893



0023893.070



0023893.090

**FEATURES**

Length : 170 cm x 25mm  
Maximum tensile load: 80kg  
Set of two belts equipped with non-slip safety metal buckle

**PRODUCTS RELATED**



0024540  
X-WATER 40L HORIZONTAL  
BAG

■ 319



0024541  
X-WATER 30L VERTICAL BAG

■ 319

**UNIVERSAL FILTER  
COVER**  
0022709



0022709.090

**FEATURES**

The filter cover is an essential accessory for safeguarding the engine.  
The filter cover fits all filter cages to allow deep washing of the motorcycle without letting water into the engine.

Weight: 70g

**PRODUCT DETAILS**

100% Rubber

Made In: Italy



**TIE DOWNS 25MM**  
0009266



0009266.010



0009266.040



0009266.060



0009266.090



0009266.111

**FEATURES**

Total Length 200 cm  
Buckle Length 177 cm

2 pz.

**PRODUCT DETAILS**

FABRIC: | Polyester 100%BUCKLE | Zinc alloy 93% | Steel 7%

Made In: China



**BIG TIE DOWNS 35MM**  
0010355



0010355.040



0010355.090



0010355.111

**FEATURES**

Total lenght 205 cm  
Buckle lenght 185 cm

2 pz.

**PRODUCT DETAILS**

FABRIC: | Polyester 100%BUCKLE | Zinc alloy 93% | Steel 7%

Made In: China

**LIQUID BREAKERS - 01**  
0001010



0001010.000

**PRODUCTS RELATED**



0023860  
ELEVATOR BIKE STAND

■ 090

**LIQUID BREAKERS - 02**  
0001011



0001011.000



**LIQUID BREAKERS - 03**  
0000045



0000045.000

**PRODUCTS RELATED**



0023860  
ELEVATOR BIKE STAND

■ 090



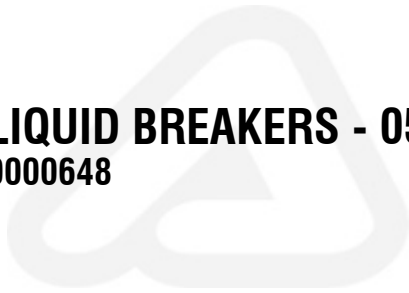
**LIQUID BREAKERS - 04**  
0000030



0000030.000



**LIQUID BREAKERS - 05**  
0000648



0000648.000

**X-BAR PAD**  
0023450



0023450.313



0023450.315



0023450.319

**FEATURES**

Cover in highly resistant TPR  
Created in foam material to absorb the blow in case of an impact

Extremely lightweight  
Velcro fastening  
Permanent wash-proof graphics

**PRODUCTS RELATED**



0009846  
MX UNIKO VENTED  
HANDGUARDS

- 011.016    ■ 030
- 040        ■ 090
- 110         ■ 112
- 325

**ACERBIS LOGO CROSS  
BAR PAD**  
0016279



0016279.090

**FOOT PEG COVER**  
0011469



0011469.010



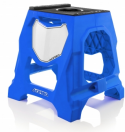
0011469.090



711 BIKE STAND  
0023453



0023453.010



0023453.040



0023453.060



0023453.070



0023453.090



0023453.110



0023453.130

FEATURES

Structure composed of a techno polymer combined with two high-resistance steel tubes  
Upper mat with anti-slip design developed for the best stability, even in wet conditions  
Removable mount to stabilise the bike according to the form of the frame  
Central hole for the insert of 'Speedy Fuel' and '10L' tanks

Maximum static load: 160 kg - 352,74 Lbs  
The very wide feet and the knurled surface prevent any swaying, ensuring that the stand is very stable on sandy or muddy ground  
Integrated customisable number plate  
Easy handhold

ELEVATOR BIKE  
STAND  
0023860



0023860.090

FEATURES

Steel constructed Lift-Stand with an additional damper to slow the period of descent when lowering.  
Rubber upper deck with adjustable height to adapt to most full-size off-road dirt-bikes as well as youth/mini bikes.  
Rotating upper deck to allow movement of the bike during maintenance.

Locking mechanism to secure the stand and prevent accidental lowering of the bike.  
Maximum height of the bike: adjustable from 33 to 46 cm / 13" to 18".  
Minimum height of the bike: adjustable from 23,5 to 36 cm / 9 1/4" to 14" for minicross  
Maximum load: 130 Kg / 286lb.

PRODUCTS RELATED



000022  
FUNNEL TANK

- 010    □ 030
- 040    ■ 070
- 110    ■ 131



0000364  
SILENCER END CAP 16-39MM

- 090



0001010  
LIQUID BREAKERS - 01

**MOTO ACCESSORIES / RACE MATERIALS / ACCESSORIES**  
**ELEVATOR BIKE STAND**



0000045  
LIQUID BREAKERS - 03



0000033  
USA DUCT TAPE 9 MT  
■ 090

**END CAP DISPLAY**  
0011550



0011550.120

**FEATURES**

2/4 STROKES  
pcs: 36 pcs. set (18 yellow / 18 black)



**2/4 STROKE -  
SILENCER END CAP**  
0009601



0009601.090

**FEATURES**

2/4 STROKES

**HANDLEBAR END CAP**  
0012989



0012989.090

**FEATURES**

5 pcs

**REAR VIEW MIRROR -  
LEFT**  
0000541

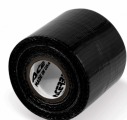




**REAR VIEW MIRROR -  
RIGHT**  
0000587



**USA DUCT TAPE 9 MT**  
0000033



0000033.090

**FEATURES**

Length: 10 mt  
Wide: 5 cm.

**PRODUCTS RELATED**



0023860  
ELEVATOR BIKE STAND

■ 090

**BIKE STAND DRIVE**  
0026568



0026568.090

**FEATURES**

The new Drive bike stand makes it easy to raise the off-road bike, move and rotate it in all directions thanks to 4 swivel wheels, two of which have brakes for added safety.  
Safety system to prevent accidental release of the stand, risking the bike falling off.

Rubberized surface to protect the motorcycle frame from scratches.  
Height of the kickstand fully up: 43cm  
Height of the stand fully down: 35cm  
Maximum load capacity: 130kg

**PRODUCT DETAILS**

98% Steel | 1% Rubber | 1% Plastic

Made In: China



## EASY MOTO CARPET

0026544



0026544.315

## FEATURES

Rubberized carpet to isolate the motorcycle from the ground  
Ideal for extraordinary and routine maintenance of the vehicle  
Absorbent top is coupled with a layer of rubberized, non-slip and waterproof material

Resistant to oil, grease, water and dirt stains prevents contamination of the ground underneath  
Can be used both outdoors and indoors  
Easily washable  
Mandatory use in many motocross tracks  
Size: 80x180 cm

## PRODUCT DETAILS

25% Polyester | 75% TPR

Made In: China



**MOTO CARPET**  
0026029



0026029.315

**FEATURES**

Rubberized bike mat, perfect for your dirtbike to be perched upon  
Ideal for maintenance of the vehicle  
Absorbent upper part is coupled with a layer of rubberized, non-slip and waterproof material  
Resistant to oil, grease, water and dirt stains the mat prevents contamination of the ground underneath

For indoor and outdoor use  
Easy to wash  
Mandatory use in several motocross tracks  
Size: 100x200 cm



**MOTO CARPET**  
0025927



0025927.315

## FEATURES

Rubberized bike mat, perfect for your dirtbike to be perched upon  
Ideal for maintenance of the vehicle  
Absorbent upper part is coupled with a layer of rubberized, non-slip and waterproof material  
Resistant to oil, grease, water and dirt stains the mat prevents contamination of the ground underneath

For indoor and outdoor use  
Easy to wash  
Mandatory use in several motocross tracks  
Size: 80x180 cm

BIKE STAND PAKET  
0025403



0025403.349



0025403.209



0025403.293



0025403.321



0025403.377



0025403.251

## FEATURES

Folding stand for off-road and supermotard motorbikes.  
Load capacity for motorbikes up to 130 kg (=286.60 Lb) and a maximum capacity of 250 kg (=551.15 Lb) including rider.  
The structure consisting of 6 plastic sections, joined by the two upper plates, provides the motorbike with excellent stability and offers a comfortable grip handle when the stand is closed.

There is a non-slip and scratch-resistant surface on the top.  
Integrated customisable number plate  
Perfectly stackable stand that only takes up a few centimetres when closed  
Embossed logo  
Weight 3300 g  
Dimensions:  
Height when closed: 610 mm;  
Height when open: 425 mm;  
Width when closed: 50 mm;  
Top surface: 300x320 mm;  
Base: 420x450 mm

## PRODUCT DETAILS

90% Polypropylene | 8% EPDM | 2% Others

Made In: China

**MOTO ACCESSORIES / RACE MATERIALS / RACE MATERIALS  
BIKE STAND PAKET**



PRODUCTS RELATED



0009846  
MX UNIKO VENTED  
HANDGUARDS

011.016 030

040 090

110 112

325



**RACE TAPE ACERBIS  
MT.500  
0025272**



**MOTO CARPET  
P-KOULIT  
0024957**



0024957.319

**FEATURES**

Rubberized bike mat, perfect for your dirtbike to be perched upon  
Ideal for maintenance of the vehicle  
Absorbent upper part is coupled with a layer of rubberized, non-slip and waterproof material  
Resistant to oil, grease, water and dirt stains the mat prevents contamination of the ground underneath

For indoor and outdoor use  
Easy to wash  
Mandatory use in several motocross tracks  
Size: 80x180 cm

**PRODUCT DETAILS**

100% Polyester

Made In: China

## MOTO KAMP TENT

0024985



0024985.319

## FEATURES

Camping tent with automatic opening  
Closed curtain size: 73x6 cm  
Weight: 2,1 Kg/ 4,6LB  
Equipped with pegs for better ground fixing

Room: 210x145 cm  
Maximum working height: 100 cm  
Resistant to wind  
Small internal storage pocket: 20x25 cm  
Capacity: 2 seats

## PRODUCT DETAILS

100% Polyester

Made In: China

**ROOF TENT FOR  
0024886.  
0024967**



0024967.060

**PRODUCTS RELATED**



0024886  
PROFILE ACERBIS TENT 3X3

■ 060



0024961  
SIDE PANELS TENT FOR  
0024886.

■ 060



**SIDE PANELS TENT  
FOR 0024886.  
0024961**



0024961.060

**PRODUCTS RELATED**



0024886  
PROFILE ACERBIS TENT 3X3

■ 060



0024967  
ROOF TENT FOR 0024886.

■ 060

**MOTO KAMP CHAIR**  
0024984



0024984.090

**FEATURES**

Foldable chair and easy to carry  
Made of durable polyester material  
2 covered armrests for maximum comfort

Recommended maximum load of 100 kg  
Closed chair size: 48x80x16 cm  
Open chair size: 48x80x59 cm

**PRODUCT DETAILS**

Steel 90,00% | Polyester 10,00%

Made In: China

**PROFILE ACERBIS  
TENT 3X3  
0024886**



0024886.060

**PRODUCT DETAILS**

POLYESTER 60% | ALLUMINIUM 30% | OTHERS 10%

Made In: China

**PRODUCTS RELATED**



0024967  
ROOF TENT FOR 0024886.

■ 060



0024961  
SIDE PANELS TENT FOR  
0024886.

■ 060



**UMBRELLA ACERBIS**  
0024731



0024731.090



0024731.110



0024731.030



0024731.040



0024731.130



0024731.010



0024731.060

**FEATURES**

Height: 98cm  
1/2 Width: 75cm

**PRODUCT DETAILS**

POLYESTER

Made In: China



**TRACK MARKER**  
**56PCS**  
**0016905**



0016905.030



0016905.133



0016905.131



0016905.061



0016905.041



0016905.014



0016905.010



0016905.040



0016905.060

## **FEATURES**

56 PCS  
Height: 76,5 cm

**RACE TAPE**  
**ACERBIS.COM**  
0024260



0024260.000

## FEATURES

Lenght 250 m

**RACE TAPE ACERBIS  
IN ACTION MT.250**  
0024261

DO NOT CROSS **ACERBIS** IN ACTION DO NOT CROSS



0024261.000

**FEATURES**

Length 250 m





**EVO 2 FOOTBALL  
SACK**  
0022759



0022759.090

**FEATURES**

Inserts in high durability 600D polyester fabric resistant to wear  
Top closure with cord

Printed logos  
Netted sack for footballs  
Adjustable shoulder strap  
Capacity 12 balls

**PRODUCT DETAILS**

100% POLYESTER

Made In: China

**SIZES**

ONE SIZE 180

## EVO 2 MEDICAL BAG

0022758



0022758.090

## FEATURES

Ergonomic opening with double zip  
2 front and back pockets lined internally with coolant padding  
2 external side pockets  
Double padded handles for better grip  
Printed logos

High durability fabric in 600D polyester resistant to wear  
Adjustable internal separator for 8 medicine compartments  
Bottom with 4 feet to protect the fabric

## PRODUCT DETAILS

100% POLYESTER 600D

Made In: China

## SIZES

ONE SIZE 180



**ATLANTIS BIB**  
0017020



0017020.010



0017020.047



0017020.060



0017020.130



0017020.141

**FEATURES**

Perforated tear-resistant fabric  
New design with logo print

5 pcs. set

**PRODUCT DETAILS**

100% POLYESTER

Made In: Pakistan

**SIZES**

S 062 | L 066 | XXL 069

**EVO TOWEL**  
0022715



0022715.040

**FEATURES**

Bath towel in soft pure cotton  
Jacquard Logo

Dimensions 140x80 cm

**PRODUCT DETAILS**

100% COTTON

Made In: Egypt

**INFLATABLE ARCH  
110V**  
0021867



0021867.060

**FEATURES**

110V

**INFLATABLE ARCH  
220V  
0014256**



0014256.060

**FEATURES**

220V  
fabric: 210D oxford nylon about 120gsm  
arch dim.: inner: 460cm wide, 330cm high, outer: 600cm wide,  
400cm high

Logo on top horizontal tube: 244cmx33cm  
Logo on diagonal tube: 80cmx50cm  
Logo on vertical tube: 27cmx214cm



**ACERBIS BANNER**  
0020068



**ACERBIS** 0020068.000

## FEATURES

1 Logo

**ACERBIS BANNERS  
ROLLS  
0020065**



---

**ACERBIS** 0020065.000

---

## FEATURES

9 logos

**MARKERS**  
0012965



0012965.060

**FEATURES**

5 pcs. set

**PIT BOARD**  
0011526



0011526.090

**FEATURES**

Pit Board + Gloves cod. 0016429

**PRODUCTS RELATED**



0016429  
COTTON GLOVES

■ 060

## OOSET BOOTS 0023859



0023859.060

## FEATURES

From size 40 to size 47  
EN ISO 20345:2011 certified  
Water, mud, oil and grease protection  
Maximum protection against crushing of the toes thanks to the steel cap and maximum protection against penetration

Outsole with grip

## PRODUCT DETAILS

PVC 95% | OTHERS 5 %

Made In: China

## SIZES

T.40 040 | T.41 041 | T.42 042 | T.43 043 | T.44 044 | T.45 045 | T.46 046 | T.47 047



**COTTON GLOVES**  
0016429



0016429.060

**PRODUCT DETAILS**

100% COTTON

Made In: China

**PRODUCTS RELATED**



0011526  
PIT BOARD

■ 090



**ACERBIS FLAG**  
0012213



0012213.279



**TRACK MARKER**  
0009606



0009606.060

**FEATURES**

Height: 76,5 cm



**RACE TAPE**  
0020066



0020066.000

**FEATURES**

Lenght 500m

**MOTO CARPET**  
0021696



0021696.318

**FEATURES**

Rubberized bike mat, perfect for your dirtbike to be perched upon  
Ideal for maintenance of the vehicle  
Absorbent upper part is coupled with a layer of rubberized, non-slip and waterproof material  
Resistant to oil, grease, water and dirt stains the mat prevents contamination of the ground underneath

For indoor and outdoor use  
Easy to wash  
Mandatory use in several motocross tracks  
Size: 100x200 cm

**MOTORBIKE COVER**  
0020086



0020086.060

**BIKE COVER**  
0022505



0022505.090

**FEATURES**

- Elasticised edge for better closing and protection
- Suitable for internal and external use
- Cover with zip
- Silver Acerbis Logo

**50 PCS SHOPPER  
BAGS**  
0026599



0026599.000

**FEATURES**

50 pieces

**KEY RINGS**  
0026002



0026002.315.002



0026002.315.005



0026002.315.006



0026002.315.007

**FEATURES**

10 pieces

**PRODUCT DETAILS**

78% PVC | 12% Iron

Made In: China

**ACERBIS LOGO  
DECALS**  
0006248



**ACERBIS** 0006248.060

## FEATURES

100 pcs. set  
15 cm

**MOUSE PAD XL  
ACERBIS**  
0024964



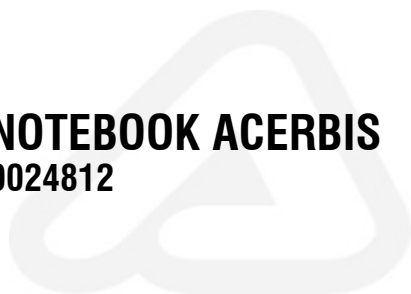
0024964.319

**FEATURES**

78,5\*40cm



**NOTEBOOK ACERBIS**  
0024812



0024812.090

**ACERBIS  
PHOTOGRAPHER VEST  
0024270**



0024270.073

**PRODUCT DETAILS**

Shell: | NYLON 70% | POLYESTER 30% | Lining: | POLYESTER 100%

Made In: China

**SIZES**

S 062 | M 064 | L 066 | XL 068 | XXL 069 | XXXL 070 | 4XL 076



**INFLATABLE  
HALF-BUST  
MANNEQUIN**  
0023846



0023846.070

**FEATURES**

Hanging inflatable half-bust mannequin  
Specific for body armour and jackets

1 pcs /set

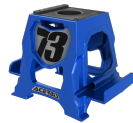
**PHONE STAND**  
0024241



0024241.110



0024241.010



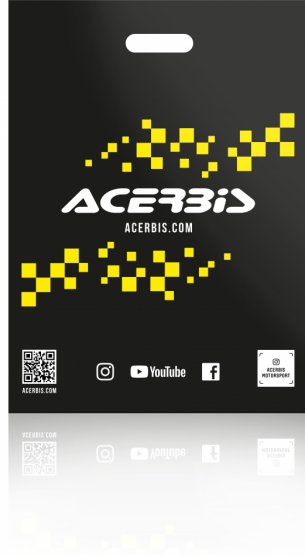
0024241.040



0024241.090



SHOPPER BAG  
0023988



0023988.090

## FEATURES

100 PIECES

## PRODUCT DETAILS

COMPONENTS: | PE-LD (Polyethylene low density) MATERIAL: | Recyclable Material

Made In: Viet Nam

**ACERBIS PLATE  
STICKER**  
0022497



0022497.315



0022497.318

FRONT NUMBER  
PLATES RIDER  
AUTOGRAPH  
0002159



0002159.010



0002159.014



0002159.030



0002159.040.098



0002159.060.003



0002159.090



0002159.110.990



0002159.130



0002159.131



**SHOES BAG**  
**0021818**



0021818.060

**FEATURES**

50 pcs



**ACERBIS LOGO  
DECALS**  
0006051



**ACERBIS** 0006051.000

## FEATURES

100 pcs. set  
13 cm

**ACERBIS LOGO  
DECALS**  
0006053



**ACERBIS** 0006053.000

## FEATURES

10 pcs. set  
30 cm

**ACERBIS LOGO  
DECALS**  
0006054



**ACERBIS** 0006054.000

## FEATURES

5 pcs. set  
60 cm

**ACERBIS LOGO  
DECALS**  
0006056



**ACERBIS** 0006056.000

## FEATURES

5 pcs. set  
90 cm

**ACERBIS LOGO  
DECALS**  
0006057



**ACERBIS** 0006057.000

## FEATURES

2 pcs. set  
150 cm



**KIT DECAL LOGO  
ACERBIS  
0017848**



0017848.318

**USB KEY**  
0021835



0021835.070

**FEATURES**

Capacity: 4 GB

**TRIAL FRONT FENDER**  
0002695



0002695.030



0002695.110

**FEATURES**

Universal trial front fender



**EVO FRONTFENDER**  
0009709



0009709.060



0009709.130

**SUPERMOTO FRONT  
FENDER**  
0008033



0008033.010.098



0008033.030



0008033.040.098



0008033.060.001



0008033.090



0008033.110.990



0008033.130.003

**SUPERMOTO  
EVOLUTION FRONT  
FENDER**  
0009708



0009708.090

**NOST FRONT FENDER**  
**0008200**

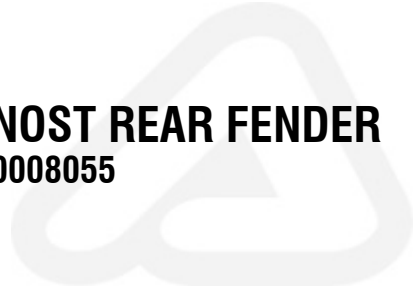


0008200.030



0008200.090

**NOST REAR FENDER**  
0008055



0008055.030



0008055.090

**SIZES**

001 001 | T.2 002 | 13 013

**BAJA REAR FENDER**  
0008013



0008013.030