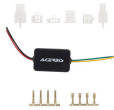
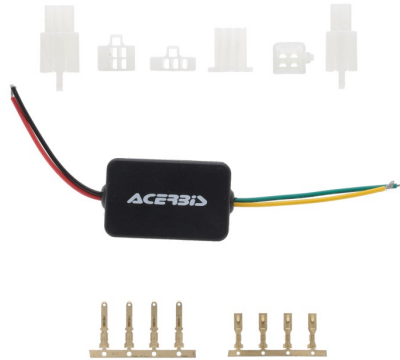


**VSL-CURRENT
RECTIFIER**
0026569



0026569.090

FEATURES

AC to DC 12V - 15A adapter, for the installation of Acerbis VSL masks to motorcycles with carburetor
Highly integrated SMD components for high stability and reliability.
Small size, easy to install, with over-voltage, over-current and short-circuit protection.
IP67 waterproof and dustproof
Plastic shell, lightweight and safe.

SPECIFICATIONS
Shell material: Plastic
Input voltage: AC 10-30V
Output voltage: DC12V±0.2V
Output current: 15A
Output power: 180W
Working temperature: -40~80?
Conversion efficiency: 92%~96%
Static power consumption: 10~15ma
Dimensions: mm./2.17 X 1.38 X 0.79 in.
Weight: 32g

PRODUCTS RELATED



0025033
HEADLIGHT MASK VSL FOR
BETA

■ 110



0024471
HEADLIGHT MASK VSL FIT ALL

□ 030

■ 090

REAR SHOCK SOCK
COVER
0026592



FEATURES

Rear shock cover, protects from dust, mud and debris.
Elastic fabric, fits all Japanese motorcycles.
Acerbis logo printed on the front and on the elastic band.

The installation requires the disassembly of the shock absorber from the motorcycle.
Weight: 20g

PRODUCT DETAILS

95% Polyestere | 4% Silicone | 1% Other

Made In: China

APPLICATIONS

BETA RR 125 2T RACING 2025 | BETA RR 200 2T RACING 2025 | BETA RR 250 2T RACING 2025 | BETA RR 300 2T RACING 2025 | BETA RR 350 4T RACING 2025 | BETA RR 390 4T RACING 2025 | BETA RR 480 4T RACING 2025 | BETA RR X-PRO 125 2T 2025 | BETA RR X-PRO 200 2T 2025 | BETA RR X-PRO 250 2T 2025 | BETA RR X-PRO 300 2T 2025 | BETA RR X-PRO 350 4T 2025 | BETA RR X-PRO 390 4T 2025 | BETA RR X-PRO 430 4T 2025 | BETA RR X-PRO 480 4T 2025 | FANTIC XE 125 2025 | FANTIC XE 300 2025 | FANTIC XEF 250 2025 | FANTIC XEF 310 2025 | FANTIC XEF 450 2025 | FANTIC XX 125 2025 | FANTIC XX 250 2025 | FANTIC XXF 250 2025 | FANTIC XXF 450 2025 | GAS GAS EC 125 2025 | GAS GAS EC 250 2025 | GAS GAS EC 300 2025 | GAS GAS MC 250 F 2025 | GAS GAS MC 350 F 2025 | GAS GAS MC 450 F 2025 | HONDA CRF 250 R 2025 | HONDA CRF 250 R-WE 2025 | HONDA CRF 250 RX 2025 | HONDA CRF 250 RX ENDURO 2025 | HONDA CRF 250 RX ENDURO SPECIAL 2025 | HONDA CRF 300 RX 2025 | HONDA CRF 300 RX ENDURO 2025 | HONDA CRF 300 RX ENDURO SPECIAL 2025 | HONDA CRF 450 R 2025 | HONDA CRF 450 R-WE 2025 | HONDA CRF 450 RX 2025 | KAWASAKI KX 250 2025 | KAWASAKI KX 250 X 2025 | KAWASAKI KX 300 X ENDURO 2025 | KAWASAKI KX 450 2025 | KAWASAKI KX 450 X 2025 | SHERCO 250 SE FACTORY 2025 | SHERCO 250 SEF FACTORY 2025 | SHERCO 300 SE FACTORY 2025 | SHERCO 300 SEF FACTORY 2025 | SUZUKI RM-Z 250 2025 | SUZUKI RM-Z 450 2025 | TRIUMPH TF 250 X 2025 | TRIUMPH TF 450-RC 2025 | YAMAHA WR 250 F 2025 | YAMAHA WR 450 F 2025 | YAMAHA YZ 125 2025 | YAMAHA YZ 250 2025 | YAMAHA YZ 250 F 2025 | YAMAHA YZ 250 FX 2025 | YAMAHA YZ 450 F 2025 | YAMAHA YZ 450 FX 2025

NEW PRODUCTS / NEW PRODUCTS
REAR SHOCK SOCK COVER



REAR SHOCK SOCK
COVER K
0026591



0026591.010



0026591.090



0026591.110

FEATURES

Rear shock cover, protects from dust, mud and debris.
Elastic fabric, fits all KTM, HUSQVARNA, GASGAS models.
Acerbis logo printed on the front and on the elastic band.

The installation requires the disassembly of the shock absorber from the motorcycle.
Weight: 20g

PRODUCT DETAILS

90% Polyestere | 2% Silicone | 6% SBR | 1% Spandex | 1% Others

Made In: China

APPLICATIONS

GAS GAS EC 250 F 2025 | GAS GAS EC 350 F 2025 | GAS GAS EC 450 F 2025 | GAS GAS EX 250 2025 | GAS GAS EX 250 F 2025 | GAS GAS EX 300 2025 | GAS GAS EX 350 F 2025 | GAS GAS EX 450 F 2025 | GAS GAS MC 125 2025 | GAS GAS MC 250 2025



TIREM-DRE BELT
0026474



0026474.090

FEATURES

Ultra-durable Nylon construction
Universal strap
Made for lifting the motorcycle in cases of extreme difficulty
Easy installation on motorcycles , only if equipped with attached license plate holder

Strap with adjustable lengths
Strong and easy to grip

PRODUCT DETAILS

Nylon 50% | Rubber 15% | Zinc Alloy 25% | Polyester 8% | Others 2%

Made In: China

APPLICATIONS

HUSQVARNA FE 350 S 2024 2025 | HUSQVARNA FE 501 S 2024 2025 | HUSQVARNA TE 300 PRO 2024 2025

RAMPA
0026239



0026239.020

FEATURES

Folding ramp for loading and unloading motorcycles
Lightweight, maneuverable, durable and easy to use.
The 22cm width allows easy loading of any motorcycle up to 210kg in running order.
When closed it occupies 95cm in height and 12cm in thickness.
Design designed for good grip, limiting the risk of slipping even in conditions where surfaces are not totally dry.

It has a mounting kit that allows a second ramp to be placed side by side, so that its width can be doubled, for greater convenience in maneuvering.
There is also a strap in the kit to allow the ramp to be secured and prevent any shifting during loading/unloading maneuvers.
Dimensions: length 190cm; width 22cm; thickness 6cm; folded length 95cm
Weight: 5.5kg

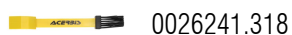
PRODUCT DETAILS

98% Inox steel | 2% Other

Made In: China



**BRUSCIA CHAIN
BRUSH**
0026241



0026241.318

FEATURES

Brush for cleaning chains and transmission assembly.
Removes sand, mud and dirt.

Suitable for wet and dry use.

PRODUCT DETAILS

100% Plastic

Made In: China

PRODUCTS RELATED



0026753
RASPA MUD SCRAPER +
BRUSCIA CHAIN BRUSH

■ 318



RASPA MUD SCRAPER
0026240



0026240.318

FEATURES

Scraper that ensures easy removal of mud from the bike.
Handle with motorcycle rubber grip for greater ergonomics.

Its shape is designed to allow easy access to curved parts, such as the fender

PRODUCT DETAILS

60% Plastic | 40% Rubber

Made In: China

PRODUCTS RELATED



0026753
RASPA MUD SCRAPER +
BRUSCIA CHAIN BRUSH

■ 318

DONUTS RING-ONE
0026076



0026076.090

FEATURES

Coated neoprene ring best protects thumbs from blistering while riding.

PRODUCTS RELATED



0025423
HANDLE COVER MANETA

■ 090

**HANGER ACERBIS SET
10 PCS
0026028**



0026028.090

DASH REV COUNTER
FOHDEGIR
0025498



0025498.090

FEATURES

Universal tachometer with RPM reader, launch control and shift warning functionality

LEDs allow you to read revolutions per minute (RPM) in real time, giving you full control

The Launch Control function ensures the rider gets the perfect start, thanks to LEDs that indicate the ideal moment to start at maximum power and control, depending on one's preferences

The shift warning function uses LEDs to signal the rider the right time to shift gears and release full engine power. The LEDs will flash at the desired rpm

Equipped with a convenient button for adjusting the necessary settings, which can be positioned on the handlebars

Front guard integrated into the aluminum support base, with the protective function from bumps and debris

Water-resistant

Applies to the front of the fender, via an aluminum bracket and screws in the mounting kit

Can be applied to any fender, with direct power supply to the battery. RPM reading is via electrical pulses detectable from the spark plug power cable

Printed logo on tachometer and lasered on bracket

PRODUCT DETAILS

PVC: 29 | 304 stainless steel: 14 | Epoxy Resin: 10 | Aluminium: 9 | ABS: 7 | Organic silicone: 6 | Copper: 5 | Methyl vinyl silicone rubber: 5 | PBT: 4 | Fiberglass: 4 | Others: 2 | PP: 3 | PMMA: 1 | PBS: 1

Made In: China

HANDLE COVER MANETA 0025423



0025423.090

FEATURES

Hand grip cover kit for transport and "donuts" thumb protection. Maneta is an innovative accessory that, thanks to its neoprene construction, fits all types of handlebars. The neoprene grip cover, prevents the grip from getting dirty during transportation and maintenance work on the motorcycle.

The outer TPR protector, allows the knob to be protected from rubbing during transport. Coated neoprene ring best protects thumbs from blistering while riding. Velcro closure for easy donning
Weight: 100g

PRODUCT DETAILS

40% Neoprene | 25% Nylon | 20% Polyestere | 12% PVC | 3% Others

Made In: China

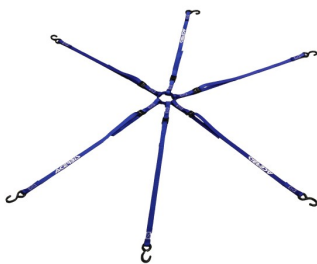
PRODUCTS RELATED



0026076
DONUTS RING-ONE

■ 090

TIE DOWN RAGNO
0025275



0025275.040



0025275.090



0025275.110

FEATURES

6 arm retaining strap
6 straps with 980mm length / 25mm width and hook
S-hooks in steel with PVC coating for protection against scratches

Maximum load 100kg / 220 Lb

PRODUCT DETAILS

POLYESTER 92,00% | STEEL 8,00%

Made In: Taiwan, Province of China

EVO WATER BOTTLE

0022923



0022923.060

FEATURES

0,75 lt water bottle in high-quality PE for food use

Ergonomic grip
Cap with one-way flow valve

PRODUCT DETAILS

100% PE

Made In: Italy

PRODUCTS RELATED



0022922
EVO Water Bottle Carrier

■ 090

SIZES

ONE SIZE 180

FLAME WORK LIGHT
0025099



0025099.318

FEATURES

GENERAL DETAILS:

Portable lamp for mechanical, folding and rechargeable
Adjustable light intensity, which allows you to meet the many lighting needs
The previously chosen lighting level is stored until a new light setting is selected
Made for motorcycle/bike maintenance
Lamp equipped with a magnet, which allows the fixing of the lamp to ferrous surfaces, to provide lighting in times of need
Hook hidden in the bottom of the light, utility for vertical suspension and convenient to hang on objects to be used for emergency road repairs, night work or multipurpose work

TECHNICAL DETAILS:

Closed lamp size: 150x48x39 mm
Open lamp size: 270x48x39 mm

Weight : 157g

Led: 1x3w (head) + 5W COB LED (side)
Battery: 3.7V; 2000mAh; Li-ion rechargeable battery
Full charge in 4 hours
Usage time: 4.5 hours with maximum intensity head light (48 hours at low intensity) and 3 hours with maximum intensity side light (30 hours at low intensity)
Lumens : 150 lumens with head light and 360 lumens with side light
USB power cable included in the box
Made of plastic material resistant to shocks and scratches
Rubberized surface for maximum grip
Equipped with a front and side light
Hook for vertical lamp suspension
Multi angle led adjustment, with 270 degree rotation

PRODUCT DETAILS

ABS 85,00% | RUBBER 1,00% | ALLUMINIUM 2,00% | POLYCARBONATE 1,00% | PRINTED CIRCUIT BOAR 8,00% | OTHERS 3,00%

Made In: China



RUMUR EARPLUGS
0025135



0025135.090

FEATURES

Acoustic protection certified EN352-2: 2002 / CE1974
Integrated acoustic filter
Nominal diameter: 7-11 mm
Transparent plastic container
Suitable for on-road and off-road use
Hypoallergenic material

Adapt to being worn for a long time and reused
Easy and comfortable to use
Maintained sound quality
Compatible with intercoms
H:20DB / M:15DB / L:11DB

PRODUCT DETAILS

POLYETHYLENE 1 % | ABS 37 % | TPR 24 % | TPU 38 %

Made In: Netherlands



FUNNEL TANK
0000022



0000022.040



0000022.131



0000022.010



0000022.030



0000022.110



0000022.070

PRODUCTS RELATED



0023860
ELEVATOR BIKE STAND

■ 090

OVERSHOES X-FOOT
0024549



0024549.090

HURA WATCH

0024682



0024682.090

FEATURES

Wristwatch
Steel case with a diameter of 43 mm
Steel ferrule
Hardened mineral glass
Steel crown and pushers
Japanese movement, Seiko VD57 chronometer
Dial with green light

Diamond-cut hands
Screw-down steel caseback
3 ATM waterproof
Adjustable strap in genuine full grain calfskin
Steel buckle
Battery operated

PRODUCT DETAILS

STEEL 60% | GLASS 5% | GENUINE LEATHER 5% | METAL 20%

Made In: China

**U-RET RADIATOR
LOUVERS**
0024804



0024804.090

FEATURES

Mesh for universal radiator louvers
It allows to limit the infiltration of mud, sand and debris into the radiator that cause the engine to overheat

Quick and easy assembly
Easy cleaning

PRODUCT DETAILS

POLYVINYL CHLORIDE 60% | POLYAMIDE 20% | POLYESTER 17% | OTHERS 3%

Made In: China

X-EXHAUST
0024259



0024259.011.016



0024259.090

FEATURES

Easy to mount with adjustable metal clamps
Resistant to high temperatures (Warning: the plastic must stay at least 8mm away from the exhaust)

Avoid contact of trousers and boots with hot exhaust
Specific to OEM standard pipes

APPLICATIONS

BETA RR 350 4T 2013 2014 2015 2016 2017 2018 2019 2020 2021 2022 2023 2024 | BETA RR 390 4T 2015 2016 2017 2018 2019 2020 2021 2022 2023 2024 | BETA RR 430 4T 2015 2016 2017 2018 2019 2020 2021 2022 2023 2024 | BETA RR 480 4T 2015 2016 2017 2018 2019 2020 2021 2022 2023 2024 | BETA RR X-PRO 350 4T 2025 | BETA RR X-PRO 390 4T 2025 | BETA RR X-PRO 430 4T 2025 | BETA RR X-PRO 480 4T 2025 | GAS GAS EC 250 F 2021 2022 2023 2024 2025 | GAS GAS EC 350 F 2021 2022 2023 2024 2025 | GAS GAS EC 450 F 2024 2025 | GAS GAS EC 500 F 2024 2025 | GAS GAS EX 250 F 2021 2022 2023 2024 2025 | GAS GAS EX 350 F 2021 2022 2023 2024 2025 | GAS GAS EX 450 F 2021 2022 2023 2024 2025 | GAS GAS MC 250 F 2021 2022 2023 2024 2025 | GAS GAS MC 350 F 2022 2023 2024 2025 | GAS GAS MC 450 F 2021 2022 2023 2024 2025 | HONDA CRF 250 R 2022 2023 2024 2025 | HONDA CRF 250 R-WE 2025 | HONDA CRF 250 RX 2022 2023 2024 2025 | HONDA CRF 250 RX ENDURO 2022 2023 2024 2025 | HONDA CRF 250 RX ENDURO SPECIAL 2022 2023 2024 2025 | HONDA CRF 300 RX 2022 2023 2024 | HONDA CRF 300 RX ENDURO 2022 2023 2024 2025 | HONDA CRF 300 RX ENDURO SPECIAL 2022 2023 2024 2025 | HONDA CRF 450 R 2020 2021 2022 2023 2024 2025 | HONDA CRF 450 R-WE 2025 | HONDA CRF 450 RX 2020 | HUSQVARNA FC 250 2014 2015 2016 2017 2018 2019 2020 2021 2022 2023 2024 2025 | HUSQVARNA FC 350 2014 2015 2016 2017 2018 2019 2020 2021 2022 2023 2024 2025 | HUSQVARNA FE 250 2014 2015 2016 2017 2018 2019 2020 2021 2022 2023 2024 2025 | HUSQVARNA FE 350 2014 2015 2016 2017 2018 2019 2020 2021 2022 2023 2024 2025 | HUSQVARNA FE 350 PRO 2024 2025 | HUSQVARNA FE 350 S 2022 2023 2024 2025 | HUSQVARNA FE 350 W 2024 | HUSQVARNA FE 450 2025 | HUSQVARNA FE 501 2025 | HUSQVARNA FE 501 S 2022 2023 2024 2025 | HUSQVARNA FE 501 W 2024 | HUSQVARNA FX 350 2020 2021 2022 2025 | HUSQVARNA FX 450 2020 2021 2022 2025 | HUSQVARNA TX 300 2025 | KAWASAKI KX 450 2024 2025 | KAWASAKI KX 450 X 2024 2025 | KTM EXC-F 250 2012 2013 2014 2015 2016 2017 2018 2019 2020 2021 2022 2023 2024 2025 | KTM EXC-F 350 2012 2013 2014 2015 2016 2017 2018 2019 2020 2021 2022 2023 2024 2025 | KTM EXC-F 450 2012 2013 2014 2015 2016 2017 2018 2019 2020 2021 2022 2023 2024 2025 | KTM EXC-F 500 2012 2013 2014 2015 2016 2017 2018 2019 2020 2021 2022 2023 2024 2025 | KTM SX-F 250 2012 2013 2014 2015 2016 2017 2018 2019 2020 2021 2022 2023 2024 2025 | KTM SX-F 350 2012 2013 2014 2015 2016 2017 2018 2019 2020 2021 2022 2023 2024 2025 | KTM SX-F 450 2012 2013 2014 2015 2016 2017 2018 2019 2020 2021 2022 2023 2024 2025 | KTM XC-W 150 TPI 2019 2020 2021 2022 2023 | KTM XCF-W 450 2024 2025 | KTM XW-F 350 2024 2025 | KTM XW-F 500 2024 2025 | SHERCO 250 SEF-R 2012 2013 2014 2015 2016 2017 2018 2019 2020 2021 2022 2023 | SHERCO 300 SEF-R 2012 2013 2014 2015 2016 2017 2018 2019 2020 2021 2022 2023 | SHERCO 450 SEF-R 2012 2013 2014 2015 2016 2017 2018 2019 2020 2021 2022 2023

**SILENCER END CAP
16-39MM
0000364**



0000364.090

PRODUCTS RELATED



0023860
ELEVATOR BIKE STAND

■ 090

UHR BAR PAD

UHR BAR PAD
0024501



0024501.315

FEATURES

MANUFACTURING AND DESIGN:

With small compartment (75x50x40mm) for storing car keys; paper towels, etc. with zippered closure.

TPR cover with excellent resistance to tearing.

Made of foam material to reduce shock in case of impact

Extremely light

Velcro fastening

Permanent wash-proof graphics

Provided with a microcomputer with the following functions:

Watch

Stopwatch

Timer

n.3 hour counter: 1 cumulative (non-resettable) and 2 partial resettable

SVC: Scheduled maintenance alert

The hour counter is activated automatically by the vibrations of the engine when the motorcycle is moving.

Lock function to prevent the hour counter from being activated while the motorcycle is being transported

Waterproof -- IP68

No external power supply required - Battery included

PRODUCT DETAILS

COMPOSITION: | 70% Polyvinyl chloride | 26% ethylene-co-vinyl acetate | 4% Polyamide

Made In: China

HOUR METER REROY

0024275



0024275.090

FEATURES

APPLICATION:

Can be mounted on cross / enduro / motard / ATV / moped / maxi enduro / trial

DETAILS:

No power supply required

Simple installation with double-sided tape

Battery included

It turns on automatically with the engine's vibrations

2 hour-counter functions: 1 total + 1 partially resettable

Lock function to prevent its activation during transport

Waterproof IP68

Possibility to improve or reduce sensitivity

0.1 hour resolution

Wireless operation

TA-TIRE BELT
0023578



0023578.090

FEATURES

Ultra-strong structure
Semi-rigid handle made of non-slip material
Made for extreme enduro use
Easily installed via ring coupling without having to remove forks

Can be installed on all fork diameters

PRODUCT DETAILS

NYLON 29,00% | ZINC ALLOY 22,00% | RUBBER 10,00% | PVC 15,00% | OTHERS 5,00% | POLYPROPYLENE 19,00%

Made In: China



X-TIRE COVER
0023579



0023579.090

FEATURES

USE: Wheel covers are used to avoid getting the bike's tyres dirty in the presence of mud and/or sand (for example after washing the bike), or before a competition at the starting grid, to avoid clogging the tyre treads, allowing the rider to have a fast start with the best possible grip and riding control.

APPLICATION: The kit consists of two Tyre covers: one for 21" front wheel and one for 18" and 19" rear wheel.

FITTING: The tyre covers can be quickly and intuitively fitted thanks to the Velcro fastener.

MAINTENANCE AND WASHING: by washing machine at 30 ° or high pressure washer (cold water)

MATERIALS: Polyester and PVC fabric resistant to wear and tear.

PRODUCT DETAILS

COMPOSITION: | 50% Polyester | 50% PVC

Made In: China

SILENCER PROTECTOR
0022754



0022754.010



0022754.040



0022754.090



0022754.110

FEATURES

Silencer protection against bumps
Circumference 200/400 mm
Locking system through micrometric closing bands

Heat resistant

PRODUCT DETAILS

100% Silicone

Made In: Italy

PRODUCTS RELATED










0023479
FULL PLASTIC KIT FOR KTM

-  011.016
-  030
-  031
-  070
-  072
-  083
-  090
-  092
-  132
-  204
-  207
-  232
-  243
-  297
-  313
-  319
-  553
-  553.020
-  553.021
-  553.022



0009846
MX UNIKO VENTED
HANDGUARDS

-  011.016
-  030
-  040
-  090
-  110
-  112
-  325

**BREMBO PUMP
COVERS**
0021680



0021680.010



0021680.011.016



0021680.030



0021680.041



0021680.060



0021680.090

FEATURES

- Polypropylene pump cover
- Protection for Brembo clutches and brake master cylinders manufactured after 2014
- Shock resistant and reduces wear of the plates
- O-Ring fixing
- **INSTALLATION DOESN'T REQUIRE LOOSENING ANY SCREWS**

PROTECTOR
0008320



0008320.090

TENAY BELT
0023893



0023893.070



0023893.090

FEATURES

Length : 170 cm x 25mm
Maximum tensile load: 80kg
Set of two belts equipped with non-slip safety metal buckle

PRODUCTS RELATED



0024540
X-WATER 40L HORIZONTAL
BAG

■ 319



0024541
X-WATER 30L VERTICAL BAG

■ 319

**UNIVERSAL FILTER
COVER**
0022709



0022709.090

FEATURES

The filter cover is an essential accessory for safeguarding the engine.
The filter cover fits all filter cages to allow deep washing of the motorcycle without letting water into the engine.

Weight: 70g

PRODUCT DETAILS

100% Rubber

Made In: Italy



TIE DOWNS 25MM
0009266



0009266.010



0009266.040



0009266.060



0009266.090



0009266.111

FEATURES

Total Length 200 cm
Buckle Length 177 cm

2 pz.

PRODUCT DETAILS

FABRIC: | Polyester 100%BUCKLE | Zinc alloy 93% | Steel 7%

Made In: China



BIG TIE DOWNS 35MM
0010355



0010355.040



0010355.090



0010355.111

FEATURES

Total lenght 205 cm
Buckle lenght 185 cm

2 pz.

PRODUCT DETAILS

FABRIC: | Polyester 100%BUCKLE | Zinc alloy 93% | Steel 7%

Made In: China

LIQUID BREAKERS - 01
0001010



0001010.000

PRODUCTS RELATED



0023860
ELEVATOR BIKE STAND

■ 090

LIQUID BREAKERS - 02
0001011



0001011.000



LIQUID BREAKERS - 03
0000045



0000045.000

PRODUCTS RELATED



0023860
ELEVATOR BIKE STAND

■ 090

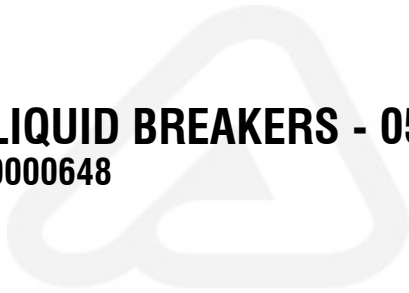


LIQUID BREAKERS - 04
0000030



0000030.000

LIQUID BREAKERS - 05
0000648



0000648.000

X-BAR PAD
0023450



0023450.313



0023450.315



0023450.319

FEATURES

Cover in highly resistant TPR
Created in foam material to absorb the blow in case of an impact

Extremely lightweight
Velcro fastening
Permanent wash-proof graphics

PRODUCTS RELATED



0009846
MX UNIKO VENTED
HANDGUARDS

- 011.016 ■ 030
- 040 ■ 090
- 110 ■ 112
- 325

**ACERBIS LOGO CROSS
BAR PAD**
0016279



0016279.090

FOOT PEG COVER
0011469



0011469.010



0011469.090

711 BIKE STAND

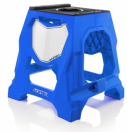


711 BIKE STAND

0023453



0023453.010



0023453.040



0023453.060



0023453.070



0023453.090



0023453.110



0023453.130

FEATURES

Structure composed of a techno polymer combined with two high-resistance steel tubes
 Upper mat with anti-slip design developed for the best stability, even in wet conditions
 Removable mount to stabilise the bike according to the form of the frame
 Central hole for the insert of 'Speedy Fuel' and '10L' tanks

Maximum static load: 160 kg - 352,74 Lbs
 The very wide feet and the knurled surface prevent any swaying, ensuring that the stand is very stable on sandy or muddy ground
 Integrated customisable number plate
 Easy handhold

ELEVATOR BIKE
STAND
0023860



0023860.090

FEATURES

Steel constructed Lift-Stand with an additional damper to slow the period of descent when lowering.
Rubber upper deck with adjustable height to adapt to most full-size off-road dirt-bikes as well as youth/mini bikes.
Rotating upper deck to allow movement of the bike during maintenance.

Locking mechanism to secure the stand and prevent accidental lowering of the bike.
Maximum height of the bike: adjustable from 33 to 46 cm / 13" to 18".
Minimum height of the bike: adjustable from 23,5 to 36 cm / 9 1/4" to 14" for minicross
Maximum load: 130 Kg / 286lb.

PRODUCTS RELATED



000022
FUNNEL TANK

- 010
- 040
- 110
- 030
- 070
- 131



0000364
SILENCER END CAP 16-39MM

- 090



0001010
LIQUID BREAKERS - 01

MOTO ACCESSORIES / RACE MATERIALS / ACCESSORIES
ELEVATOR BIKE STAND



0000045
LIQUID BREAKERS - 03



0000033
USA DUCT TAPE 9 MT

■ 090

END CAP DISPLAY
0011550



0011550.120

FEATURES

2/4 STROKES
pcs: 36 pcs. set (18 yellow / 18 black)

**2/4 STROKE -
SILENCER END CAP**
0009601



0009601.090

FEATURES

2/4 STROKES

HANDLEBAR END CAP
0012989



0012989.090

FEATURES

5 pcs



**REAR VIEW MIRROR -
LEFT**
0000541



0000541.090

**REAR VIEW MIRROR -
RIGHT**
0000587



USA DUCT TAPE 9 MT
0000033



0000033.090

FEATURES

Length: 10 mt
Wide: 5 cm.

PRODUCTS RELATED



0023860
ELEVATOR BIKE STAND

■ 090

BIKE STAND DRIVE
0026568



0026568.090

FEATURES

The new Drive bike stand makes it easy to raise the off-road bike, move and rotate it in all directions thanks to 4 swivel wheels, two of which have brakes for added safety.
Safety system to prevent accidental release of the stand, risking the bike falling off.

Rubberized surface to protect the motorcycle frame from scratches.
Height of the kickstand fully up: 43cm
Height of the stand fully down: 35cm
Maximum load capacity: 130kg

PRODUCT DETAILS

98% Steel | 1% Rubber | 1% Plastic

Made In: China



EASY MOTO CARPET

0026544



0026544.315

FEATURES

Rubberized carpet to isolate the motorcycle from the ground
Ideal for extraordinary and routine maintenance of the vehicle
Absorbent top is coupled with a layer of rubberized, non-slip and waterproof material

Resistant to oil, grease, water and dirt stains prevents contamination of the ground underneath
Can be used both outdoors and indoors
Easily washable
Mandatory use in many motocross tracks
Size: 80x180 cm

PRODUCT DETAILS

25% Polyester | 75% TPR

Made In: China



MOTO CARPET
0026029



0026029.315

FEATURES

Rubberized bike mat, perfect for your dirtbike to be perched upon
Ideal for maintenance of the vehicle
Absorbent upper part is coupled with a layer of rubberized, non-slip and waterproof material
Resistant to oil, grease, water and dirt stains the mat prevents contamination of the ground underneath

For indoor and outdoor use
Easy to wash
Mandatory use in several motocross tracks
Size: 100x200 cm

MOTO CARPET
0025927



0025927.315

FEATURES

Rubberized bike mat, perfect for your dirtbike to be perched upon
Ideal for maintenance of the vehicle
Absorbent upper part is coupled with a layer of rubberized, non-slip and waterproof material
Resistant to oil, grease, water and dirt stains the mat prevents contamination of the ground underneath

For indoor and outdoor use
Easy to wash
Mandatory use in several motocross tracks
Size: 80x180 cm

BIKE STAND PAKET
0025403



0025403.349



0025403.209



0025403.293



0025403.321



0025403.377



0025403.251

FEATURES

Folding stand for off-road and supermotard motorbikes.
Load capacity for motorbikes up to 130 kg (=286.60 Lb) and a maximum capacity of 250 kg (=551.15 Lb) including rider.
The structure consisting of 6 plastic sections, joined by the two upper plates, provides the motorbike with excellent stability and offers a comfortable grip handle when the stand is closed.

There is a non-slip and scratch-resistant surface on the top.
Integrated customisable number plate
Perfectly stackable stand that only takes up a few centimetres when closed
Embossed logo
Weight 3300 g
Dimensions:
Height when closed: 610 mm;
Height when open: 425 mm;
Width when closed: 50 mm;
Top surface: 300x320 mm;
Base: 420x450 mm

PRODUCT DETAILS

90% Polypropylene | 8% EPDM | 2% Others

Made In: China

**MOTO ACCESSORIES / RACE MATERIALS / RACE MATERIALS
BIKE STAND PAKET**



PRODUCTS RELATED



0009846
MX UNIKO VENTED
HANDGUARDS

■ 011.016 □ 030

■ 040 ■ 090

■ 110 ■ 112

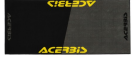
■ 325



**RACE TAPE ACERBIS
MT.500
0025272**



**MOTO CARPET
P-KOULIT
0024957**



0024957.319

FEATURES

Rubberized bike mat, perfect for your dirtbike to be perched upon
Ideal for maintenance of the vehicle
Absorbent upper part is coupled with a layer of rubberized, non-slip and waterproof material
Resistant to oil, grease, water and dirt stains the mat prevents contamination of the ground underneath

For indoor and outdoor use
Easy to wash
Mandatory use in several motocross tracks
Size: 80x180 cm

PRODUCT DETAILS

100% Polyester

Made In: China

MOTO KAMP TENT
0024985



0024985.319

FEATURES

Camping tent with automatic opening
Closed curtain size: 73x6 cm
Weight: 2,1 Kg/ 4,6LB
Equipped with pegs for better ground fixing

Room: 210x145 cm
Maximum working height: 100 cm
Resistant to wind
Small internal storage pocket: 20x25 cm
Capacity: 2 seats

PRODUCT DETAILS

100% Polyester

Made In: China

**ROOF TENT FOR
0024886.
0024967**



0024967.060

PRODUCTS RELATED



0024886
PROFILE ACERBIS TENT 3X3

■ 060



0024961
SIDE PANELS TENT FOR
0024886.

■ 060

**SIDE PANELS TENT
FOR 0024886.
0024961**



0024961.060

PRODUCTS RELATED



0024886
PROFILE ACERBIS TENT 3X3

■ 060



0024967
ROOF TENT FOR 0024886.

■ 060

MOTO KAMP CHAIR
0024984



0024984.090

FEATURES

Foldable chair and easy to carry
Made of durable polyester material
2 covered armrests for maximum comfort

Recommended maximum load of 100 kg
Closed chair size: 48x80x16 cm
Open chair size: 48x80x59 cm

PRODUCT DETAILS

Steel 90,00% | Polyester 10,00%

Made In: China

**PROFILE ACERBIS
TENT 3X3
0024886**



0024886.060

PRODUCT DETAILS

POLYESTER 60% | ALLUMINIUM 30% | OTHERS 10%

Made In: China

PRODUCTS RELATED



0024967
ROOF TENT FOR 0024886.

■ 060



0024961
SIDE PANELS TENT FOR
0024886.

■ 060



UMBRELLA ACERBIS
0024731



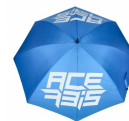
0024731.090



0024731.110



0024731.030



0024731.040



0024731.130



0024731.010



0024731.060

FEATURES

Height: 98cm
1/2 Width: 75cm

PRODUCT DETAILS

POLYESTER

Made In: China



TRACK MARKER
56PCS
0016905



0016905.030



0016905.133



0016905.131



0016905.061



0016905.041



0016905.014



0016905.010



0016905.040



0016905.060

FEATURES

56 PCS
Height: 76,5 cm

RACE TAPE
ACERBIS.COM
0024260



0024260.000

FEATURES

Lenght 250 m

**RACE TAPE ACERBIS
IN ACTION MT.250**
0024261

DO NOT CROSS **ACERBIS** IN ACTION DO NOT CROSS



0024261.000

FEATURES

Length 250 m



**EVO 2 FOOTBALL
SACK**
0022759



0022759.090

FEATURES

Inserts in high durability 600D polyester fabric resistant to wear
Top closure with cord

Printed logos
Netted sack for footballs
Adjustable shoulder strap
Capacity 12 balls

PRODUCT DETAILS

100% POLYESTER

Made In: China

SIZES

ONE SIZE 180

EVO 2 MEDICAL BAG

0022758



0022758.090

FEATURES

Ergonomic opening with double zip
2 front and back pockets lined internally with coolant padding
2 external side pockets
Double padded handles for better grip
Printed logos

High durability fabric in 600D polyester resistant to wear
Adjustable internal separator for 8 medicine compartments
Bottom with 4 feet to protect the fabric

PRODUCT DETAILS

100% POLYESTER 600D

Made In: China

SIZES

ONE SIZE 180



ATLANTIS BIB
0017020



0017020.010



0017020.047



0017020.060



0017020.130



0017020.141

FEATURES

Perforated tear-resistant fabric
New design with logo print

5 pcs. set

PRODUCT DETAILS

100% POLYESTER

Made In: Pakistan

SIZES

S 062 | L 066 | XXL 069

EVO TOWEL
0022715



0022715.040

FEATURES

Bath towel in soft pure cotton
Jacquard Logo

Dimensions 140x80 cm

PRODUCT DETAILS

100% COTTON

Made In: Egypt

**INFLATABLE ARCH
110V**
0021867



0021867.060

FEATURES

110V

**INFLATABLE ARCH
220V
0014256**



0014256.060

FEATURES

220V
fabric: 210D oxford nylon about 120gsm
arch dim.: inner: 460cm wide, 330cm high, outer: 600cm wide,
400cm high

Logo on top horizontal tube: 244cmx33cm
Logo on diagonal tube: 80cmx50cm
Logo on vertical tube: 27cmx214cm

ACERBIS BANNER
0020068



ACERBIS 0020068.000

FEATURES

1 Logo

**ACERBIS BANNERS
ROLLS
0020065**



ACERBIS 0020065.000

FEATURES

9 logos

MARKERS
0012965



0012965.060

FEATURES

5 pcs. set

PIT BOARD
0011526



0011526.090

FEATURES

Pit Board + Gloves cod. 0016429

PRODUCTS RELATED



0016429
COTTON GLOVES

■ 060

OOSET BOOTS 0023859



0023859.060

FEATURES

From size 40 to size 47
EN ISO 20345:2011 certified
Water, mud, oil and grease protection
Maximum protection against crushing of the toes thanks to the steel cap and maximum protection against penetration

Outsole with grip

PRODUCT DETAILS

PVC 95% | OTHERS 5 %

Made In: China

SIZES

T.40 040 | T.41 041 | T.42 042 | T.43 043 | T.44 044 | T.45 045 | T.46 046 | T.47 047



COTTON GLOVES
0016429



0016429.060

PRODUCT DETAILS

100% COTTON

Made In: China

PRODUCTS RELATED



0011526
PIT BOARD

■ 090



ACERBIS FLAG
0012213



0012213.279



TRACK MARKER
0009606



0009606.060

FEATURES

Height: 76,5 cm

RACE TAPE
0020066



0020066.000

FEATURES

Lenght 500m

MOTO CARPET
0021696



0021696.318

FEATURES

Rubberized bike mat, perfect for your dirtbike to be perched upon
Ideal for maintenance of the vehicle
Absorbent upper part is coupled with a layer of rubberized, non-slip
and waterproof material
Resistant to oil, grease, water and dirt stains the mat prevents
contamination of the ground underneath

For indoor and outdoor use
Easy to wash
Mandatory use in several motocross tracks
Size: 100x200 cm

MOTORBIKE COVER
0020086



0020086.060

BIKE COVER
0022505



0022505.090

FEATURES

- Elasticised edge for better closing and protection
- Suitable for internal and external use
- Cover with zip
- Silver Acerbis Logo

**50 PCS SHOPPER
BAGS**
0026599



0026599.000

FEATURES

50 pieces

KEY RINGS
0026002



0026002.315.002



0026002.315.005



0026002.315.006



0026002.315.007

FEATURES

10 pieces

PRODUCT DETAILS

78% PVC | 12% Iron

Made In: China

**ACERBIS LOGO
DECALS**
0006248

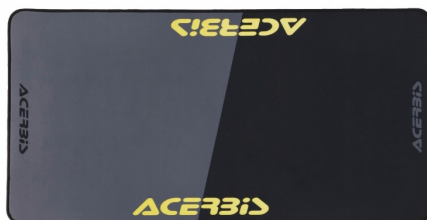


ACERBIS 0006248.060

FEATURES

100 pcs. set
15 cm

**MOUSE PAD XL
ACERBIS**
0024964

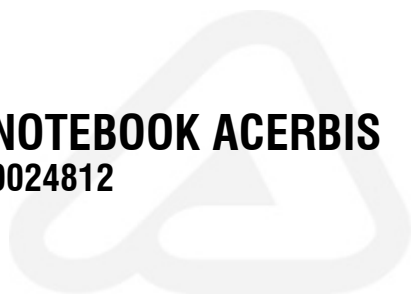


0024964.319

FEATURES

78,5*40cm

NOTEBOOK ACERBIS
0024812



0024812.090

**ACERBIS
PHOTOGRAPHER VEST
0024270**



0024270.073

PRODUCT DETAILS

Shell: | NYLON 70% | POLYESTER 30% | Lining: | POLYESTER 100%

Made In: China

SIZES

S 062 | M 064 | L 066 | XL 068 | XXL 069 | XXXL 070 | 4XL 076



**INFLATABLE
HALF-BUST
MANNEQUIN**
0023846



0023846.070

FEATURES

Hanging inflatable half-bust mannequin
Specific for body armour and jackets

1 pcs /set

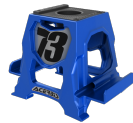
PHONE STAND
0024241



0024241.110



0024241.010



0024241.040



0024241.090



SHOPPER BAG
0023988



0023988.090

FEATURES

100 PIECES

PRODUCT DETAILS

COMPONENTS: | PE-LD (Polyethylene low density) MATERIAL: | Recyclable Material

Made In: Viet Nam

**ACERBIS PLATE
STICKER**
0022497



0022497.315



0022497.318

FRONT NUMBER
PLATES RIDER
AUTOGRAPH
0002159



0002159.010



0002159.014



0002159.030



0002159.040.098



0002159.060.003



0002159.090



0002159.110.990



0002159.130



0002159.131



SHOES BAG
0021818



0021818.060

FEATURES

50 pcs

**ACERBIS LOGO
DECALS**
0006051



ACERBIS 0006051.000

FEATURES

100 pcs. set
13 cm

**ACERBIS LOGO
DECALS**
0006053



ACERBIS 0006053.000

FEATURES

10 pcs. set
30 cm

**ACERBIS LOGO
DECALS**
0006054



ACERBIS 0006054.000

FEATURES

5 pcs. set
60 cm

**ACERBIS LOGO
DECALS**
0006056



ACERBIS 0006056.000

FEATURES

5 pcs. set
90 cm

**ACERBIS LOGO
DECALS**
0006057



ACERBIS 0006057.000

FEATURES

2 pcs. set
150 cm



**KIT DECAL LOGO
ACERBIS
0017848**



0017848.318

USB KEY
0021835



0021835.070

FEATURES

Capacity: 4 GB

TRIAL FRONT FENDER
0002695



0002695.030



0002695.110

FEATURES

Universal trial front fender

EVO FRONTFENDER
0009709



0009709.060



0009709.130

**SUPERMOTO FRONT
FENDER**
0008033



0008033.010.098



0008033.030



0008033.040.098



0008033.060.001



0008033.090



0008033.110.990



0008033.130.003

**SUPERMOTO
EVOLUTION FRONT
FENDER**
0009708



0009708.090

NOST FRONT FENDER
0008200

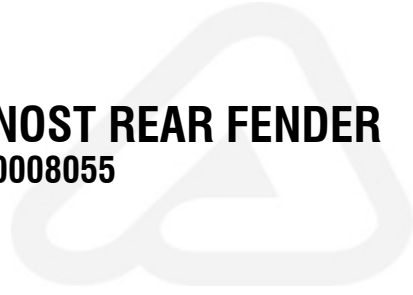


0008200.030



0008200.090

NOST REAR FENDER
0008055



0008055.030



0008055.090

SIZES

001 001 | T.2 002 | 13 013

BAJA REAR FENDER
0008013



0008013.030