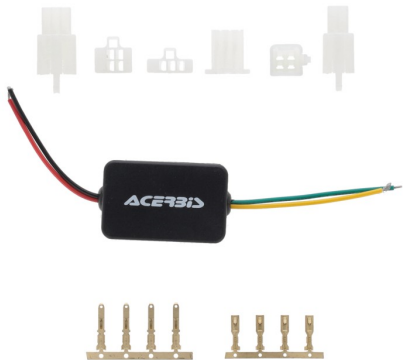


VSL-CURRENT
RECTIFIER
0026569



0026569.090

FEATURES

<p>AC to DC 12V - 15A adapter, for the installation of Acerbis VSL masks to motorcycles with carburetor</p> <p>Highly integrated SMD components for high stability and reliability.</p> <p>Small size, easy to install, with over-voltage, over-current and short-circuit protection.</p> <p>IP67 waterproof and dustproof</p> <p>Plastic shell, lightweight and safe.</p>	<p>SPECIFICATIONS</p> <p>Shell material: Plastic</p> <p>Input voltage: AC 10-30V</p> <p>Output voltage: DC12V±0.2V</p> <p>Output current: 15A</p> <p>Output power: 180W</p> <p>Working temperature: -40~80°</p> <p>Conversion efficiency: 92%~96%</p> <p>Static power consumption: 10~15ma</p> <p>Dimensions: mm./2.17 X 1.38 X 0.79 in.</p> <p>Weight: 32g</p>
--	---


APPLICATIONS

BETA RR X-PRO 125 2T 2025 | BETA RR X-PRO 200 2T 2025 | BETA RR X-PRO 250 2T 2025 | BETA RR X-PRO 300 2T 2025

PRODUCTS RELATED





0025033
HEADLIGHT MASK VSL FOR
BETA

 110



0024471
HEADLIGHT MASK VSL FIT ALL

 030  090

REAR SHOCK SOCK
COVER
0026592



0026592.040



0026592.110



0026592.090



0026592.130

FEATURES

Rear shock cover, protects from dust, mud and debris. Elastic fabric, fits all Japanese motorcycles. Acerbis logo printed on the front and on the elastic band.	The installation requires the disassembly of the shock absorber from the motorcycle. Weight: 20g
---	---

PRODUCT DETAILS

95% Polyestere | 4% Silicone | 1% Other
Made In: China

REAR SHOCK SOCK
COVER K
0026591



0026591.010



0026591.090



0026591.110

FEATURES

Rear shock cover, protects from dust, mud and debris. Elastic fabric, fits all KTM, HUSQVARNA, GASGAS models. Acerbis logo printed on the front and on the elastic band.	The installation requires the disassembly of the shock absorber from the motorcycle. Weight: 20g
--	---

PRODUCT DETAILS

90% Polyestere | 2% Silicone | 6% SBR | 1% Spandex | 1% Others

Made In: China

TIREM-DRE BELT
0026474



0026474.090

FEATURES

Ultra-durable Nylon construction Universal strap Made for lifting the motorcycle in cases of extreme difficulty Easy installation on motorcycles , only if equipped with attached license plate holder	Strap with adjustable lengths Strong and easy to grip
---	--

PRODUCT DETAILS

Nylon 50% | Rubber 15% | Zinc Alloy 25% | Polyester 8% | Others 2%

Made In: China

RAMPA
0026239



0026239.020

FEATURES

<p>Folding ramp for loading and unloading motorcycles Lightweight, maneuverable, durable and easy to use. The 22cm width allows easy loading of any motorcycle up to 210kg in running order. When closed it occupies 95cm in height and 12cm in thickness. Design designed for good grip, limiting the risk of slipping even in conditions where surfaces are not totally dry.</p>	<p>It has a mounting kit that allows a second ramp to be placed side by side, so that its width can be doubled, for greater convenience in maneuvering. There is also a strap in the kit to allow the ramp to be secured and prevent any shifting during loading/unloading maneuvers. Dimensions: length 190cm; width 22cm; thickness 6cm; folded length 95cm Weight: 5.5kg</p>
--	---

PRODUCT DETAILS

98% Inox steel | 2% Other

Made In: China

BRUSCIA CHAIN
BRUSH
0026241



0026241.318

FEATURES

Brush for cleaning chains and transmission assembly.
Removes sand, mud and dirt.

Suitable for wet and dry use.

PRODUCT DETAILS

100% Plastic

Made In: China



RASPA MUD SCRAPER

0026240



0026240.318

FEATURES

Scraper that ensures easy removal of mud from the bike. Handle with motorcycle rubber grip for greater ergonomics.	Its shape is designed to allow easy access to curved parts, such as the fender
---	--

PRODUCT DETAILS

60% Plastic | 40% Rubber

Made In: China

DONUTS RING-ONE
0026076



0026076.090

FEATURES

Coated neoprene ring best protects thumbs from blistering while riding.

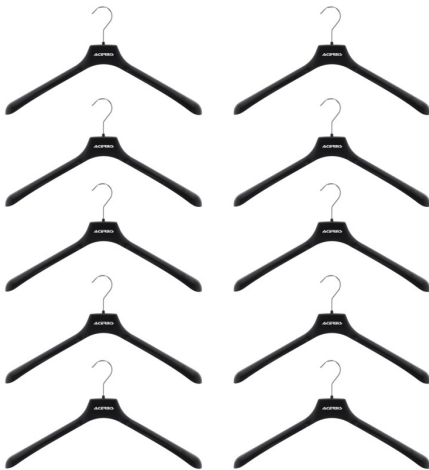
PRODUCTS RELATED



0025423
HANDLE COVER MANETA

090

HANGER ACERBIS SET
10 PCS
0026028



0026028.090

DASH REV COUNTER
FOHDEGIR
0025498



0025498.090

FEATURES

Universal tachometer with RPM reader, launch control and shift warning functionality LEDs allow you to read revolutions per minute (RPM) in real time, giving you full control The Launch Control function ensures the rider gets the perfect start, thanks to LEDs that indicate the ideal moment to start at maximum power and control, depending on one's preferences The shift warning function uses LEDs to signal the rider the right time to shift gears and release full engine power. the LEDs will flash at the desired rpm	Equipped with a convenient button for adjusting the necessary settings, which can be positioned on the handlebars Front guard integrated into the aluminum support base, with the protective function from bumps and debris Water-resistant Applies to the front of the fender, via an aluminum bracket and screws in the mounting kit Can be applied to any fender, with direct power supply to the battery. RPM reading is via electrical pulses detectable from the spark plug power cable Printed logo on tachometer and lasered on bracket
--	--

PRODUCT DETAILS

PVC: 29 | 304 stainless steel: 14 | Epoxy Resin: 10 | Aluminium: 9 | ABS: 7 | Organic silicone: 6 | Copper: 5 | Methyl vinyl silicone rubber: 5 | PBT: 4 | Fiberglass: 4 | Others: 2 | PP: 3 | PMMA: 1 | PBS: 1

Made In: China

HANDLE COVER MANETA 0025423



0025423.090

FEATURES

Hand grip cover kit for transport and "donuts" thumb protection. Maneta is an innovative accessory that, thanks to its neoprene construction, fits all types of handlebars. The neoprene grip cover, prevents the grip from getting dirty during transportation and maintenance work on the motorcycle.

The outer TPR protector, allows the knob to be protected from rubbing during transport. Coated neoprene ring best protects thumbs from blistering while riding. Velcro closure for easy donning
Weight: 100g

PRODUCT DETAILS

40% Neoprene | 25% Nylon | 20% Polyestere | 12% PVC | 3% Others

Made In: China

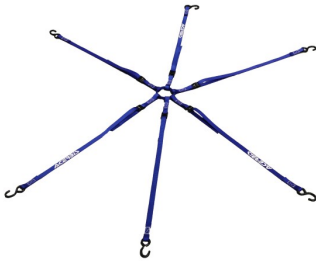
PRODUCTS RELATED



0026076
DONUTS RING-ONE

■ 090

TIE DOWN RAGNO
0025275



0025275.040



0025275.090



0025275.110

FEATURES

- 6 arm retaining strap
- 6 straps with 980mm length / 25mm width and hook
- S-hooks in steel with PVC coating for protection against scratches

Maximum load 100kg / 220 Lb

PRODUCT DETAILS

POLYESTER 92,00% | STEEL 8,00%

Made In: Taiwan, Province of China

EVO WATER BOTTLE

0022923



0022923.060

FEATURES

0,75 lt water bottle in high-quality PE for food use	Ergonomic grip Cap with one-way flow valve
--	---

PRODUCT DETAILS

100% PE
Made In: Italy

PRODUCTS RELATED



0022922
EVO Water Bottle Carrier

■ 090

SIZES

ONE SIZE 180

FLAME WORK LIGHT
0025099



FEATURES

GENERAL DETAILS:
Portable lamp for mechanical, folding and rechargeable
Adjustable light intensity, which allows you to meet the many lighting needs
The previously chosen lighting level is stored until a new light setting is selected
Made for motorcycle/bike maintenance
Lamp equipped with a magnet, which allows the fixing of the lamp to ferrous surfaces, to provide lighting in times of need
Hook hidden in the bottom of the light , utility for vertical suspension and convenient to hang on objects to be used for emergency road repairs, night work or multipurpose work
TECHNICAL DETAILS:
Closed lamp size: 150x48x39 mm
Open lamp size: 270x48x39 mm

Weight : 157g
Led: 1x3w (head) + 5W COB LED (side)
Battery: 3.7V; 2000mAh; Li-ion rechargeable battery
Full charge in 4 hours
Usage time: 4.5 hours with maximum intensity head light (48 hours at low intensity) and 3 hours with maximum intensity side light (30 hours at low intensity)
Lumens : 150 lumens with head light and 360 lumens with side light
USB power cable included in the box
Made of plastic material resistant to shocks and scratches
Rubberized surface for maximum grip
Equipped with a front and side light
Hook for vertical lamp suspension
Multi angle led adjustment, with 270 degree rotation

PRODUCT DETAILS

ABS 85,00% | RUBBER 1,00% | ALLUMINIUM 2,00% | POLYCARBONATE 1,00% | PRINTED CIRCUIT BOAR 8,00% | OTHERS 3,00%

Made In: China



RUMUR EARPLUGS

0025135



0025135.090

FEATURES

Acoustic protection certified EN352-2: 2002 / CE1974	Adapt to being worn for a long time and reused
Integrated acoustic filter	Easy and comfortable to use
Nominal diameter: 7-11 mm	Maintained sound quality
Transparent plastic container	Compatible with intercoms
Suitable for on-road and off-road use	H:20DB / M:15DB / L:11DB
Hypoallergenic material	

PRODUCT DETAILS

POLYETHYLENE 1 % | ABS 37 % | TPR 24 % | TPU 38 %

Made In: Netherlands



FUNNEL TANK

0000022



0000022.040



0000022.131



0000022.010



0000022.030



0000022.110



0000022.070

PRODUCTS RELATED



0023860
ELEVATOR BIKE STAND

■ 090

OVERSHOES X-FOOT
0024549



0024549.090

HURA WATCH
0024682



0024682.090

FEATURES

Wristwatch	Diamond-cut hands
Steel case with a diameter of 43 mm	Screw-down steel caseback
Steel ferrule	3 ATM waterproof
Hardened mineral glass	Adjustable strap in genuine full grain calfskin
Steel crown and pushers	Steel buckle
Japanese movement, Seiko VD57 chronometer	Battery operated
Dial with green light	

PRODUCT DETAILS

STEEL 60% | GLASS 5% | GENUINE LEATHER 5% | METAL 20%

Made In: China

U-RET RADIATOR
LOUVERS
0024804



0024804.090

FEATURES

Mesh for universal radiator louvers It allows to limit the infiltration of mud, sand and debris into the radiator that cause the engine to overheat	Quick and easy assembly Easy cleaning
--	--

PRODUCT DETAILS

POLYVINYL CHLORIDE 60% | POLYAMIDE 20% | POLYESTER 17% | OTHERS 3%

Made In: China

X-EXHAUST
0024259



0024259.011.016



0024259.090

FEATURES

Easy to mount with adjustable metal clamps	Avoid contact of trousers and boots with hot exhaust
Resistant to high temperatures (Warning: the plastic must stay at least 8mm away from the exhaust)	Specific to OEM standard pipes

APPLICATIONS

BETA RR 350 4T 2013 2014 2015 2016 2017 2018 2019 2020 2021 2022 2023 2024 | BETA RR 390 4T 2015 2016 2017 2018 2019 2020 2021 2022 2023 2024 | BETA RR 430 4T 2015 2016 2017 2018 2019 2020 2021 2022 2023 2024 | BETA RR 480 4T 2015 2016 2017 2018 2019 2020 2021 2022 2023 2024 | BETA RR X-PRO 350 4T 2025 | BETA RR X-PRO 390 4T 2025 | BETA RR X-PRO 430 4T 2025 | BETA RR X-PRO 480 4T 2025 | GAS GAS EC 250 F 2021 2022 2023 2024 2025 | GAS GAS EC 350 F 2021 2022 2023 2024 2025 | GAS GAS EC 450 F 2024 2025 | GAS GAS EC 500 F 2024 2025 | GAS GAS EX 250 F 2021 2022 2023 2024 2025 | GAS GAS EX 350 F 2021 2022 2023 2024 2025 | GAS GAS EX 450 F 2021 2022 2023 2024 2025 | GAS GAS MC 250 F 2021 2022 2023 2024 2025 | GAS GAS MC 350 F 2022 2023 2024 2025 | GAS GAS MC 450 F 2021 2022 2023 2024 2025 | HONDA CRF 250 R 2022 2023 2024 2025 | HONDA CRF 250 R-WE 2025 | HONDA CRF 250 RX 2022 2023 2024 2025 | HONDA CRF 250 RX ENDURO 2022 2023 2024 2025 | HONDA CRF 250 RX ENDURO SPECIAL 2022 2023 2024 2025 | HONDA CRF 300 RX 2022 2023 2024 | HONDA CRF 300 RX ENDURO 2022 2023 2024 2025 | HONDA CRF 300 RX ENDURO SPECIAL 2022 2023 2024 2025 | HONDA CRF 450 R 2020 2021 2022 2023 2024 2025 | HONDA CRF 450 R-WE 2025 | HONDA CRF 450 RX 2020 | HUSQVARNA FC 250 2014 2015 2016 2017 2018 2019 2020 2021 2022 2023 2024 2025 | HUSQVARNA FC 350 2014 2015 2016 2017 2018 2019 2020 2021 2022 2023 2024 2025 | HUSQVARNA FC 450 2014 2015 2016 2017 2018 2019 2020 2021 2022 2023 2024 2025 | HUSQVARNA FE 250 2014 2015 2016 2017 2018 2019 2020 2021 2022 2023 2024 2025 | HUSQVARNA FE 350 2014 2015 2016 2017 2018 2019 2020 2021 2022 2023 2024 2025 | HUSQVARNA FE 350 PRO 2024 | HUSQVARNA FE 350 S 2022 2023 2024 2025 | HUSQVARNA FE 350 W 2024 | HUSQVARNA FE 450 2025 | HUSQVARNA FE 501 2025 | HUSQVARNA FE 501 S 2022 2023 2024 2025 | HUSQVARNA FE 501 W 2024 | HUSQVARNA FX 350 2020 2021 2022 2025 | HUSQVARNA FX 450 2020 2021 2022 2025 | HUSQVARNA TX 300 2025 | KAWASAKI KX 450 2024 2025 | KAWASAKI KX 450 X 2024 2025 | KTM EXC-F 250 2012 2013 2014 2015 2016 2017 2018 2019 2020 2021 2022 2023 2024 2025 | KTM EXC-F 350 2012 2013 2014 2015 2016 2017 2018 2019 2020 2021 2022 2023 2024 2025 | KTM EXC-F 450 2012 2013 2014 2015 2016 2017 2018 2019 2020 2021 2022 2023 2024 2025 | KTM EXC-F 500 2012 2013 2014 2015 2016 2017 2018 2019 2020 2021 2022 2023 2024 2025 | KTM SX-F 250 2012 2013 2014 2015 2016 2017 2018 2019 2020 2021 2022 2023 2024 2025 | KTM SX-F 350 2012 2013 2014 2015 2016 2017 2018 2019 2020 2021 2022 2023 2024 2025 | KTM SX-F 450 2012 2013 2014 2015 2016 2017 2018 2019 2020 2021 2022 2023 2024 2025 | KTM XC-W 150 TPI 2019 2020 2021 2022 2023 | KTM XCF-W 450 2024 2025 | KTM XW-F 350 2024 2025 | KTM XW-F 500 2024 2025 | SHERCO 250 SEF-R 2012 2013 2014 2015 2016 2017 2018 2019 2020 2021 2022 2023 | SHERCO 300 SEF-R 2012 2013 2014 2015 2016 2017 2018 2019 2020 2021 2022 2023 | SHERCO 450 SEF-R 2012 2013 2014 2015 2016 2017 2018 2019 2020 2021 2022 2023 | SHERCO 500 SEF FACTORY 2020 2021 2022 2023

SILENCER END CAP
16,39MM
0000364



0000364.090

PRODUCTS RELATED



0023860
ELEVATOR BIKE STAND

■ 090

UHR BAR PAD
0024501



0024501.315

FEATURES

MANUFACTURING AND DESIGN:
With small compartment (75x50x40mm) for storing car keys; paper towels, etc. with zippered closure.
TPR cover with excellent resistance to tearing.
Made of foam material to reduce shock in case of impact
Extremely light
Velcro fastening
Permanent wash-proof graphics
Provided with a microcomputer with the following functions:
Watch
Stopwatch
Timer
n.3 hour counter: 1 cumulative (non-resettable) and 2 partial resettable

SVC: Scheduled maintenance alert
The hour counter is activated automatically by the vibrations of the engine when the motorcycle is moving.
Lock function to prevent the hour counter from being activated while the motorcycle is being transported
Waterproof -- IP68
No external power supply required - Battery included

PRODUCT DETAILS

COMPOSITION: | 70% Polyvinyl chloride | 26% ethylene-co-vinyl acetate | 4% Polyamide

Made In: China

HOUR METER REROY

0024275



0024275.090

FEATURES

APPLICATION:

Can be mounted on cross / enduro / motard / ATV / moped / maxi enduro / trial

DETAILS:

No power supply required

Simple installation with double-sided tape

Battery included

It turns on automatically with the engine's vibrations

2 hour-counter functions: 1 total + 1 partially resettable

Lock function to prevent its activation during transport

Waterproof IP68

Possibility to improve or reduce sensitivity

0.1 hour resolution

Wireless operation

TA-TIRE BELT
0023578



0023578.090

FEATURES

Ultra-strong structure	Can be installed on all fork diameters
Semi-rigid handle made of non-slip material	
Made for extreme enduro use	
Easily installed via ring coupling without having to remove forks	

PRODUCT DETAILS

NYLON 29,00% | ZINC ALLOY 22,00% | RUBBER 10,00% | PVC 15,00% | OTHERS 5,00% | POLYPROPYLENE 19,00%

Made In: China



X-TIRE COVER

0023579



0023579.090

FEATURES

<p>USE: Wheel covers are used to avoid getting the bike's tyres dirty in the presence of mud and/or sand (for example after washing the bike), or before a competition at the starting grid, to avoid clogging the tyre treads, allowing the rider to have a fast start with the best possible grip and riding control.</p> <p>APPLICATION: The kit consists of two Tyre covers: one for 21" front wheel and one for 18" and 19" rear wheel.</p>	<p>FITTING: The tyre covers can be quickly and intuitively fitted thanks to the Velcro fastener.</p> <p>MAINTENANCE AND WASHING: by washing machine at 30 ° or high pressure washer (cold water)</p> <p>MATERIALS: Polyester and PVC fabric resistant to wear and tear.</p>
--	--

PRODUCT DETAILS

COMPOSITION: | 50% Polyester | 50% PVC

Made In: China



	0022754.010		0022754.040		0022754.090		0022754.110
--	-------------	---	-------------	---	-------------	---	-------------

FEATURES

Silencer protection against bumps Circumference 200/400 mm Locking system through micrometric closing bands	Heat resistant
---	----------------

PRODUCT DETAILS

100% Silicone

Made In: Italy

PRODUCTS RELATED



0023479
FULL PLASTIC KIT FOR KTM

- | | |
|---------|---------|
| 011.016 | 030 |
| 031 | 070 |
| 072 | 083 |
| 090 | 092 |
| 132 | 204 |
| 207 | 232 |
| 243 | 297 |
| 313 | 319 |
| 553 | 553.020 |
| 553.021 | 553.022 |



0025486
ENDURANCE-X HANDGUARDS

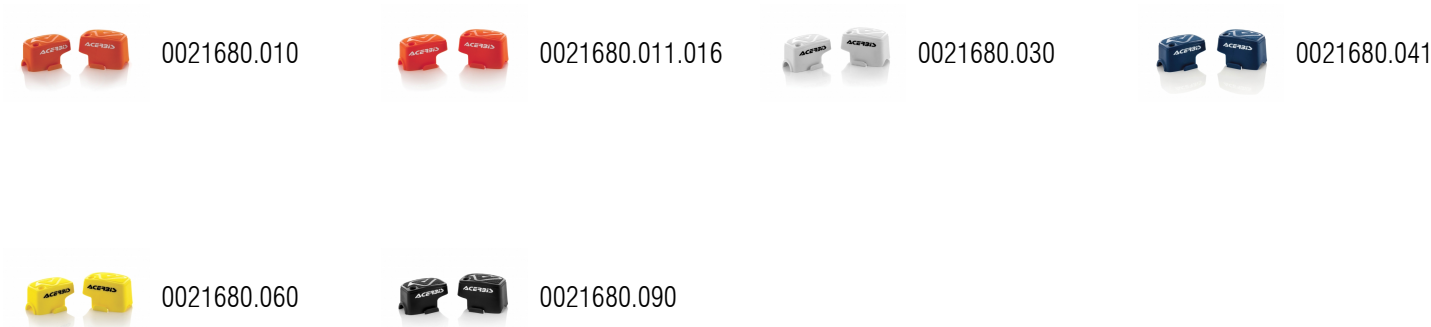
- | | |
|-----|-----|
| 090 | 209 |
| 237 | 245 |
| 279 | 315 |
| 343 | 349 |
| 377 | 848 |



0009846
MX UNIKO VENTED
HANDGUARDS

- | | |
|---------|-----|
| 011.016 | 030 |
| 040 | 090 |
| 110 | 111 |
| 112 | 325 |

BREMBO PUMP
COVERS
0021680



FEATURES

- Polypropylene pump cover
- Protection for Brembo clutches and brake master cylinders manufactured after 2014
- Shock resistant and reduces wear of the plates
- O-Ring fixing
- INSTALLATION DOESN'T REQUIRE LOOSENING ANY SCREWS



PROTECTOR
0008320



0008320.090

TENAY BELT
0023893



0023893.070



0023893.090

FEATURES

Length : 170 cm x 25mm
Maximum tensile load: 80kg
Set of two belts equipped with non-slip safety metal buckle

PRODUCTS RELATED



0024540
X-WATER 40L HORIZONTAL
BAG

■ 319



0024541
X-WATER 30L VERTICAL BAG

■ 319

UNIVERSAL FILTER
COVER
0022709



0022709.090



TIE DOWNS 25MM

0009266



0009266.010



0009266.040



0009266.060



0009266.090



0009266.111

FEATURES

Total Lenght 200 cm
Buckle Lenght 177 cm

2 pz.

PRODUCT DETAILS

FABRIC: | Polyester 100%BUCKLE | Zinc alloy 93% | Steel 7%

Made In: China



BIG TIE DOWNS 35MM
0010355



0010355.040



0010355.090



0010355.111

FEATURES

Total lenght 205 cm Buckle lenght 185 cm	2 pz.
---	-------

PRODUCT DETAILS

FABRIC: | Polyester 100%BUCKLE | Zinc alloy 93% | Steel 7%

Made In: China

LIQUID BREAKERS - 01
0001010



0001010.000

PRODUCTS RELATED



0023860
ELEVATOR BIKE STAND

■ 090

LIQUID BREAKERS - 02
0001011



0001011.000



LIQUID BREAKERS - 03
0000045



0000045.000

PRODUCTS RELATED



0023860
ELEVATOR BIKE STAND

090



LIQUID BREAKERS - 04
0000030



0000030.000

LIQUID BREAKERS - 05
0000648



0000648.000

X-BAR PAD

0023450



0023450.313



0023450.315



0023450.319

FEATURES

Cover in highly resistant TPR
Created in foam material to absorb the blow in case of an impact

Extremely lightweight
Velcro fastening
Permanent wash-proof graphics

PRODUCTS RELATED



0025486
ENDURANCE-X HANDGUARDS

- | | |
|-----|-----|
| 090 | 209 |
| 237 | 245 |
| 279 | 315 |
| 343 | 349 |
| 377 | 848 |



0009846
MX UNIKO VENTED
HANDGUARDS

- | | |
|---------|-----|
| 011.016 | 030 |
| 040 | 090 |
| 110 | 111 |
| 112 | 325 |

ACERBIS LOGO CROSS
BAR PAD
0016279



0016279.090

FOOT PEG COVER
0011469



0011469.010



0011469.090



711 BIKE STAND
0023453



0023453.010



0023453.040



0023453.060



0023453.070



0023453.090



0023453.110



0023453.130

FEATURES

Structure composed of a techno polymer combined with two high-resistance steel tubes
Upper mat with anti-slip design developed for the best stability, even in wet conditions
Removable mount to stabilise the bike according to the form of the frame
Central hole for the insert of 'Speedy Fuel' and '10L' tanks

Maximum static load: 160 kg - 352,74 Lbs
The very wide feet and the knurled surface prevent any swaying, ensuring that the stand is very stable on sandy or muddy ground
Integrated customisable number plate
Easy handhold

ELEVATOR BIKE
STAND
0023860



0023860.090

FEATURES

Steel constructed Lift-Stand with an additional damper to slow the period of descent when lowering.	Locking mechanism to secure the stand and prevent accidental lowering of the bike.
Rubber upper deck with adjustable height to adapt to most full-size off-road dirt-bikes as well as youth/mini bikes.	Maximum height of the bike: adjustable from 33 to 46 cm / 13" to 18".
Rotating upper deck to allow movement of the bike during maintenance.	Minimum height of the bike: adjustable from 23,5 to 36 cm / 9 ¼" to 14" for minicross
	Maximum load: 130 Kg / 286lb.

PRODUCTS RELATED



0000022
FUNNEL TANK

- 010

040

110
- 030

070

131



0000364
SILENCER END CAP 16,39MM

- 090



0001010
LIQUID BREAKERS - 01

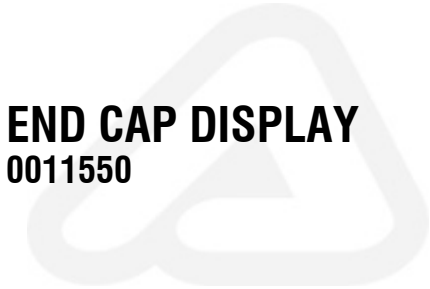
MOTO ACCESSORIES / RACE MATERIALS / ACCESSORIES
ELEVATOR BIKE STAND



0000045
LIQUID BREAKERS - 03



0000033
USA DUCT TAPE 9 MT
■ 090



END CAP DISPLAY
0011550



0011550.120

FEATURES

2/4 STROKES
pcs: 36 pcs. set (18 yellow / 18 black)

2/4 STROKE END CAP
0009601



0009601.090

FEATURES

2/4 STROKES



0012989.090

REAR VIEW MIRROR -
LEFT
0000541



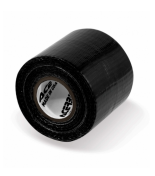
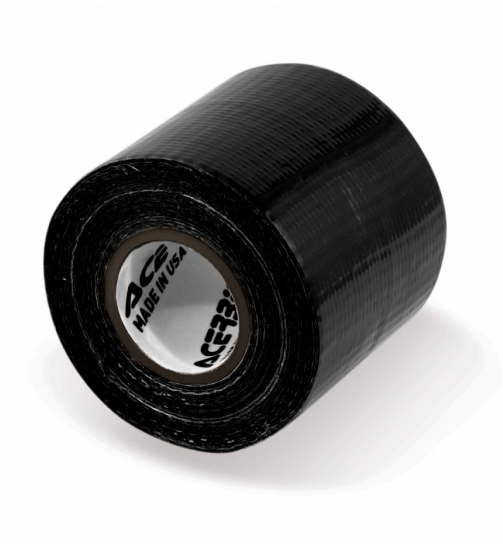
0000541.090

REAR VIEW MIRROR -
RIGHT
0000587



0000587.090

USA DUCT TAPE 9 MT
0000033



0000033.090

FEATURES

Lenght: 10 mt
Wide: 5 cm.

PRODUCTS RELATED



0023860
ELEVATOR BIKE STAND

■ 090