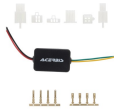
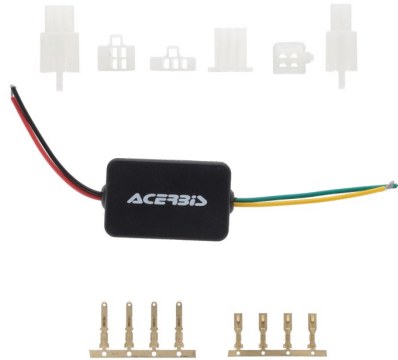


**VSL-CURRENT  
RECTIFIER**  
0026569



0026569.090

**FEATURES**

AC to DC 12V - 15A adapter, for the installation of Acerbis VSL masks to motorcycles with carburetor  
Highly integrated SMD components for high stability and reliability.  
Small size, easy to install, with over-voltage, over-current and short-circuit protection.  
IP67 waterproof and dustproof  
Plastic shell, lightweight and safe.

**SPECIFICATIONS**  
Shell material: Plastic  
Input voltage: AC 10-30V  
Output voltage: DC12V±0.2V  
Output current: 15A  
Output power: 180W  
Working temperature: -40~80?  
Conversion efficiency: 92%~96%  
Static power consumption: 10~15ma  
Dimensions: mm./2.17 X 1.38 X 0.79 in.  
Weight: 32g

**PRODUCTS RELATED**



0025033  
HEADLIGHT MASK VSL FOR  
BETA

■ 110



0024471  
HEADLIGHT MASK VSL FIT ALL

□ 030

■ 090

REAR SHOCK SOCK  
COVER  
0026592



0026592.040



0026592.110



0026592.090



0026592.130

FEATURES

Rear shock cover, protects from dust, mud and debris.  
Elastic fabric, fits all Japanese motorcycles.  
Acerbis logo printed on the front and on the elastic band.

The installation requires the disassembly of the shock absorber from the motorcycle.  
Weight: 20g

PRODUCT DETAILS

95% Polyestere | 4% Silicone | 1% Other

Made In: China

REAR SHOCK SOCK  
COVER K  
0026591



0026591.010



0026591.090



0026591.110

FEATURES

Rear shock cover, protects from dust, mud and debris.  
Elastic fabric, fits all KTM, HUSQVARNA, GASGAS models.  
Acerbis logo printed on the front and on the elastic band.

The installation requires the disassembly of the shock absorber from the motorcycle.  
Weight: 20g

PRODUCT DETAILS

90% Polyestere | 2% Silicone | 6% SBR | 1% Spandex | 1% Others

Made In: China



**TIREM-DRE BELT**  
0026474



0026474.090

**FEATURES**

Ultra-durable Nylon construction  
Universal strap  
Made for lifting the motorcycle in cases of extreme difficulty  
Easy installation on motorcycles , only if equipped with attached license plate holder

Strap with adjustable lengths  
Strong and easy to grip

**PRODUCT DETAILS**

Nylon 50% | Rubber 15% | Zinc Alloy 25% | Polyester 8% | Others 2%

Made In: China

**RAMPA**  
0026239



0026239.020

## FEATURES

Folding ramp for loading and unloading motorcycles  
Lightweight, maneuverable, durable and easy to use.  
The 22cm width allows easy loading of any motorcycle up to 210kg in running order.  
When closed it occupies 95cm in height and 12cm in thickness.  
Design designed for good grip, limiting the risk of slipping even in conditions where surfaces are not totally dry.

It has a mounting kit that allows a second ramp to be placed side by side, so that its width can be doubled, for greater convenience in maneuvering.  
There is also a strap in the kit to allow the ramp to be secured and prevent any shifting during loading/unloading maneuvers.  
Dimensions: length 190cm; width 22cm; thickness 6cm; folded length 95cm  
Weight: 5.5kg

## PRODUCT DETAILS


98% Inox steel | 2% Other

Made In: China



**BRUSCIA CHAIN  
BRUSH**  
0026241



 0026241.318

**FEATURES**

Brush for cleaning chains and transmission assembly.  
Removes sand, mud and dirt.

Suitable for wet and dry use.

**PRODUCT DETAILS**

100% Plastic

Made In: China



**RASPA MUD SCRAPER**  
0026240



0026240.318

**FEATURES**

Scraper that ensures easy removal of mud from the bike.  
Handle with motorcycle rubber grip for greater ergonomics.

Its shape is designed to allow easy access to curved parts, such as the fender

**PRODUCT DETAILS**

60% Plastic | 40% Rubber

Made In: China

**DONUTS RING-ONE**  
0026076



0026076.090

**FEATURES**

Coated neoprene ring best protects thumbs from blistering while riding.

**PRODUCTS RELATED**

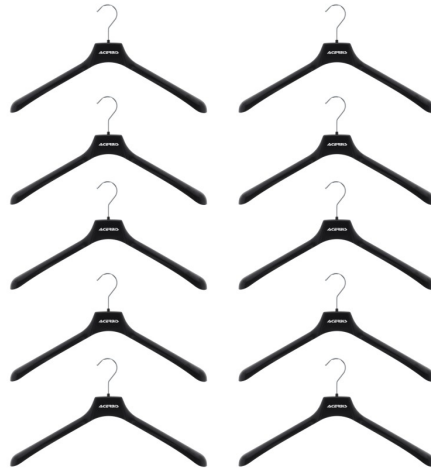


0025423  
HANDLE COVER MANETA

■ 090



**HANGER ACERBIS SET  
10 PCS  
0026028**



0026028.090

DASH REV COUNTER  
FOHDEGIR  
0025498



0025498.090

## FEATURES

Universal tachometer with RPM reader, launch control and shift warning functionality

LEDs allow you to read revolutions per minute (RPM) in real time, giving you full control

The Launch Control function ensures the rider gets the perfect start, thanks to LEDs that indicate the ideal moment to start at maximum power and control, depending on one's preferences

The shift warning function uses LEDs to signal the rider the right time to shift gears and release full engine power. The LEDs will flash at the desired rpm

Equipped with a convenient button for adjusting the necessary settings, which can be positioned on the handlebars

Front guard integrated into the aluminum support base, with the protective function from bumps and debris

Water-resistant

Applies to the front of the fender, via an aluminum bracket and screws in the mounting kit

Can be applied to any fender, with direct power supply to the battery. RPM reading is via electrical pulses detectable from the spark plug power cable

Printed logo on tachometer and lasered on bracket

## PRODUCT DETAILS

PVC: 29 | 304 stainless steel: 14 | Epoxy Resin: 10 | Aluminium: 9 | ABS: 7 | Organic silicone: 6 | Copper: 5 | Methyl vinyl silicone rubber: 5 | PBT: 4 | Fiberglass: 4 | Others: 2 | PP: 3 | PMMA: 1 | PBS: 1

Made In: China

HANDLE COVER  
MANETA  
0025423



0025423.090

## FEATURES

Hand grip cover kit for transport and "donuts" thumb protection. Maneta is an innovative accessory that, thanks to its neoprene construction, fits all types of handlebars. The neoprene grip cover, prevents the grip from getting dirty during transportation and maintenance work on the motorcycle.

The outer TPR protector, allows the knob to be protected from rubbing during transport. Coated neoprene ring best protects thumbs from blistering while riding. Velcro closure for easy donning  
Weight: 100g

## PRODUCT DETAILS

40% Neoprene | 25% Nylon | 20% Polyestere | 12% PVC | 3% Others

Made In: China

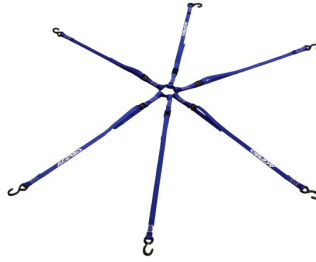
## PRODUCTS RELATED



0026076  
DONUTS RING-ONE

■ 090

**TIE DOWN RAGNO**  
0025275



0025275.040



0025275.090



0025275.110

**FEATURES**

6 arm retaining strap  
6 straps with 980mm length / 25mm width and hook  
S-hooks in steel with PVC coating for protection against scratches

Maximum load 100kg / 220 Lb

**PRODUCT DETAILS**

POLYESTER 92,00% | STEEL 8,00%

Made In: Taiwan, Province of China

## EVO WATER BOTTLE

0022923



0022923.060

### FEATURES

0,75 lt water bottle in high-quality PE for food use

Ergonomic grip  
Cap with one-way flow valve

### PRODUCT DETAILS

100% PE

Made In: Italy

### PRODUCTS RELATED



0022922  
EVO Water Bottle Carrier

■ 090

### SIZES

ONE SIZE 180

FLAME WORK LIGHT  
0025099



0025099.318

FEATURES

GENERAL DETAILS:

Portable lamp for mechanical, folding and rechargeable  
Adjustable light intensity, which allows you to meet the many lighting needs  
The previously chosen lighting level is stored until a new light setting is selected  
Made for motorcycle/bike maintenance  
Lamp equipped with a magnet, which allows the fixing of the lamp to ferrous surfaces, to provide lighting in times of need  
Hook hidden in the bottom of the light, utility for vertical suspension and convenient to hang on objects to be used for emergency road repairs, night work or multipurpose work

TECHNICAL DETAILS:

Closed lamp size: 150x48x39 mm  
Open lamp size: 270x48x39 mm

Weight : 157g

Led: 1x3w ( head ) + 5W COB LED ( side )  
Battery: 3.7V; 2000mAh; Li-ion rechargeable battery  
Full charge in 4 hours  
Usage time: 4.5 hours with maximum intensity head light (48 hours at low intensity) and 3 hours with maximum intensity side light (30 hours at low intensity)  
Lumens : 150 lumens with head light and 360 lumens with side light  
USB power cable included in the box  
Made of plastic material resistant to shocks and scratches  
Rubberized surface for maximum grip  
Equipped with a front and side light  
Hook for vertical lamp suspension  
Multi angle led adjustment, with 270 degree rotation

PRODUCT DETAILS

ABS 85,00% | RUBBER 1,00% | ALLUMINIUM 2,00% | POLYCARBONATE 1,00% | PRINTED CIRCUIT BOAR 8,00% | OTHERS 3,00%

Made In: China



**RUMUR EARPLUGS**  
0025135



0025135.090

**FEATURES**

Acoustic protection certified EN352-2: 2002 / CE1974  
Integrated acoustic filter  
Nominal diameter: 7-11 mm  
Transparent plastic container  
Suitable for on-road and off-road use  
Hypoallergenic material

Adapt to being worn for a long time and reused  
Easy and comfortable to use  
Maintained sound quality  
Compatible with intercoms  
H:20DB / M:15DB / L:11DB

**PRODUCT DETAILS**

POLYETHYLENE 1 % | ABS 37 % | TPR 24 % | TPU 38 %

Made In: Netherlands



FUNNEL TANK  
0000022



0000022.040



0000022.131



0000022.010



0000022.030



0000022.110



0000022.070

PRODUCTS RELATED



0023860  
ELEVATOR BIKE STAND

■ 090



**OVERSHOES X-FOOT**  
0024549



0024549.090

## HURA WATCH

0024682



0024682.090

## FEATURES

Wristwatch  
Steel case with a diameter of 43 mm  
Steel ferrule  
Hardened mineral glass  
Steel crown and pushers  
Japanese movement, Seiko VD57 chronometer  
Dial with green light

Diamond-cut hands  
Screw-down steel caseback  
3 ATM waterproof  
Adjustable strap in genuine full grain calfskin  
Steel buckle  
Battery operated

## PRODUCT DETAILS

STEEL 60% | GLASS 5% | GENUINE LEATHER 5% | METAL 20%

Made In: China

## U-RET RADIATOR LOUVERS

0024804



0024804.090

### FEATURES

Mesh for universal radiator louvers  
It allows to limit the infiltration of mud, sand and debris into the radiator that cause the engine to overheat

Quick and easy assembly  
Easy cleaning

### PRODUCT DETAILS

POLYVINYL CHLORIDE 60% | POLYAMIDE 20% | POLYESTER 17% | OTHERS 3%

Made In: China

**X-EXHAUST**  
0024259



0024259.011.016



0024259.090

**FEATURES**

Easy to mount with adjustable metal clamps  
Resistant to high temperatures (Warning: the plastic must stay at least 8mm away from the exhaust)

Avoid contact of trousers and boots with hot exhaust  
Specific to OEM standard pipes

**APPLICATIONS**

BETA RR 350 4T 2013 2014 2015 2016 2017 2018 2019 2020 2021 2022 2023 2024 | BETA RR 390 4T 2015 2016 2017 2018 2019 2020 2021 2022 2023 2024 | BETA RR 430 4T 2015 2016 2017 2018 2019 2020 2021 2022 2023 2024 | BETA RR 480 4T 2015 2016 2017 2018 2019 2020 2021 2022 2023 2024 | BETA RR X-PRO 350 4T 2025 | BETA RR X-PRO 390 4T 2025 | BETA RR X-PRO 430 4T 2025 | BETA RR X-PRO 480 4T 2025 | GAS GAS EC 250 F 2021 2022 2023 2024 2025 | GAS GAS EC 350 F 2021 2022 2023 2024 2025 | GAS GAS EC 450 F 2024 2025 | GAS GAS EC 500 F 2024 2025 | GAS GAS EX 250 F 2021 2022 2023 2024 2025 | GAS GAS EX 350 F 2021 2022 2023 2024 2025 | GAS GAS EX 450 F 2021 2022 2023 2024 2025 | GAS GAS MC 250 F 2021 2022 2023 2024 2025 | GAS GAS MC 350 F 2022 2023 2024 2025 | GAS GAS MC 450 F 2021 2022 2023 2024 2025 | HONDA CRF 250 R 2022 2023 2024 2025 | HONDA CRF 250 R-WE 2025 | HONDA CRF 250 RX 2022 2023 2024 2025 | HONDA CRF 250 RX ENDURO 2022 2023 2024 2025 | HONDA CRF 250 RX ENDURO SPECIAL 2022 2023 2024 2025 | HONDA CRF 300 RX 2022 2023 2024 | HONDA CRF 300 RX ENDURO 2022 2023 2024 2025 | HONDA CRF 300 RX ENDURO SPECIAL 2022 2023 2024 2025 | HONDA CRF 450 R 2020 2021 2022 2023 2024 2025 | HONDA CRF 450 R-WE 2025 | HONDA CRF 450 RX 2020 | HUSQVARNA FC 250 2014 2015 2016 2017 2018 2019 2020 2021 2022 2023 2024 2025 | HUSQVARNA FC 350 2014 2015 2016 2017 2018 2019 2020 2021 2022 2023 2024 2025 | HUSQVARNA FE 250 2014 2015 2016 2017 2018 2019 2020 2021 2022 2023 2024 2025 | HUSQVARNA FE 350 PRO 2024 | HUSQVARNA FE 350 S 2022 2023 2024 2025 | HUSQVARNA FE 350 W 2024 | HUSQVARNA FE 450 2025 | HUSQVARNA FE 501 2025 | HUSQVARNA FE 501 S 2022 2023 2024 2025 | HUSQVARNA FE 501 W 2024 | HUSQVARNA FX 350 2020 2021 2022 2025 | HUSQVARNA FX 450 2020 2021 2022 2025 | HUSQVARNA TX 300 2025 | KAWASAKI KX 450 2024 2025 | KAWASAKI KX 450 X 2024 2025 | KTM EXC-F 250 2012 2013 2014 2015 2016 2017 2018 2019 2020 2021 2022 2023 2024 2025 | KTM EXC-F 350 2012 2013 2014 2015 2016 2017 2018 2019 2020 2021 2022 2023 2024 2025 | KTM EXC-F 450 2012 2013 2014 2015 2016 2017 2018 2019 2020 2021 2022 2023 2024 2025 | KTM EXC-F 500 2012 2013 2014 2015 2016 2017 2018 2019 2020 2021 2022 2023 2024 2025 | KTM SX-F 250 2012 2013 2014 2015 2016 2017 2018 2019 2020 2021 2022 2023 2024 2025 | KTM SX-F 350 2012 2013 2014 2015 2016 2017 2018 2019 2020 2021 2022 2023 2024 2025 | KTM SX-F 450 2012 2013 2014 2015 2016 2017 2018 2019 2020 2021 2022 2023 2024 2025 | KTM XC-W 150 TPI 2019 2020 2021 2022 2023 | KTM XCF-W 450 2024 2025 | KTM XW-F 350 2024 2025 | KTM XW-F 500 2024 2025 | SHERCO 250 SEF-R 2012 2013 2014 2015 2016 2017 2018 2019 2020 2021 2022 2023 | SHERCO 300 SEF-R 2012 2013 2014 2015 2016 2017 2018 2019 2020 2021 2022 2023 | SHERCO 450 SEF-R 2012 2013 2014 2015 2016 2017 2018 2019 2020 2021 2022 2023 | SHERCO 500 SEF FACTORY 2020 2021 2022 2023



**SILENCER END CAP  
16-39MM  
0000364**



0000364.090

**PRODUCTS RELATED**



0023860  
ELEVATOR BIKE STAND

■ 090

**UHR BAR PAD**

**UHR BAR PAD**  
**0024501**



0024501.315

**FEATURES**

**MANUFACTURING AND DESIGN:**

With small compartment (75x50x40mm) for storing car keys; paper towels, etc. with zippered closure.

TPR cover with excellent resistance to tearing.

Made of foam material to reduce shock in case of impact

Extremely light

Velcro fastening

Permanent wash-proof graphics

Provided with a microcomputer with the following functions:

Watch

Stopwatch

Timer

n.3 hour counter: 1 cumulative (non-resettable) and 2 partial resettable

SVC: Scheduled maintenance alert

The hour counter is activated automatically by the vibrations of the engine when the motorcycle is moving.

Lock function to prevent the hour counter from being activated while the motorcycle is being transported

Waterproof -- IP68

No external power supply required - Battery included

**PRODUCT DETAILS**

COMPOSITION: | 70% Polyvinyl chloride | 26% ethylene-co-vinyl acetate | 4% Polyamide

Made In: China

## HOUR METER REROY

0024275



0024275.090

## FEATURES

### APPLICATION:

Can be mounted on cross / enduro / motard / ATV / moped / maxi enduro / trial

### DETAILS:

No power supply required

Simple installation with double-sided tape

Battery included

It turns on automatically with the engine's vibrations

2 hour-counter functions: 1 total + 1 partially resettable

Lock function to prevent its activation during transport

Waterproof IP68

Possibility to improve or reduce sensitivity

0.1 hour resolution

Wireless operation



## TA-TIRE BELT 0023578



0023578.090

## FEATURES

Ultra-strong structure  
Semi-rigid handle made of non-slip material  
Made for extreme enduro use  
Easily installed via ring coupling without having to remove forks

Can be installed on all fork diameters

## PRODUCT DETAILS

NYLON 29,00% | ZINC ALLOY 22,00% | RUBBER 10,00% | PVC 15,00% | OTHERS 5,00% | POLYPROPYLENE 19,00%

Made In: China



**X-TIRE COVER**  
**0023579**



0023579.090

**FEATURES**

**USE:** Wheel covers are used to avoid getting the bike's tyres dirty in the presence of mud and/or sand (for example after washing the bike), or before a competition at the starting grid, to avoid clogging the tyre treads, allowing the rider to have a fast start with the best possible grip and riding control.

**APPLICATION:** The kit consists of two Tyre covers: one for 21" front wheel and one for 18" and 19" rear wheel.

**FITTING:** The tyre covers can be quickly and intuitively fitted thanks to the Velcro fastener.

**MAINTENANCE AND WASHING:** by washing machine at 30 ° or high pressure washer (cold water)

**MATERIALS:** Polyester and PVC fabric resistant to wear and tear.

**PRODUCT DETAILS**

COMPOSITION: | 50% Polyester | 50% PVC

Made In: China

**SILENCER PROTECTOR**  
0022754



0022754.010



0022754.040



0022754.090



0022754.110

**FEATURES**

Silencer protection against bumps  
Circumference 200/400 mm  
Locking system through micrometric closing bands

Heat resistant

**PRODUCT DETAILS**



100% Silicone

Made In: Italy

PRODUCTS RELATED











0023479  
FULL PLASTIC KIT FOR KTM

-  011.016
-  030
-  031
-  070
-  072
-  083
-  090
-  092
-  132
-  204
-  207
-  232
-  243
-  297
-  313
-  319
-  553
-  553.020
-  553.021
-  553.022



0009846  
MX UNIKO VENTED  
HANDGUARDS

-  011.016
-  030
-  040
-  090
-  110
-  111
-  112
-  325

**BREMBO PUMP  
COVERS**  
0021680



0021680.010



0021680.011.016



0021680.030



0021680.041



0021680.060



0021680.090

**FEATURES**

- Polypropylene pump cover
- Protection for Brembo clutches and brake master cylinders manufactured after 2014
- Shock resistant and reduces wear of the plates
- O-Ring fixing
- **INSTALLATION DOESN'T REQUIRE LOOSENING ANY SCREWS**

**PROTECTOR**  
0008320



0008320.090

**TENAY BELT**  
0023893



0023893.070



0023893.090

**FEATURES**

Length : 170 cm x 25mm  
Maximum tensile load: 80kg  
Set of two belts equipped with non-slip safety metal buckle

**PRODUCTS RELATED**



0024540  
X-WATER 40L HORIZONTAL  
BAG

■ 319



0024541  
X-WATER 30L VERTICAL BAG

■ 319

**UNIVERSAL FILTER  
COVER**  
0022709



0022709.090

**FEATURES**

The filter cover is an essential accessory for safeguarding the engine. Weight: 70g  
The filter cover fits all filter cages to allow deep washing of the motorcycle without letting water into the engine.

**PRODUCT DETAILS**

100% Rubber

Made In: Italy





**TIE DOWNS 25MM**  
0009266



0009266.010



0009266.040



0009266.060



0009266.090



0009266.111

**FEATURES**

Total Length 200 cm  
Buckle Length 177 cm

2 pz.

**PRODUCT DETAILS**

FABRIC: | Polyester 100%BUCKLE | Zinc alloy 93% | Steel 7%

Made In: China



**BIG TIE DOWNS 35MM**  
0010355



0010355.040



0010355.090



0010355.111

**FEATURES**

Total lenght 205 cm  
Buckle lenght 185 cm

2 pz.

**PRODUCT DETAILS**

FABRIC: | Polyester 100%BUCKLE | Zinc alloy 93% | Steel 7%

Made In: China

**LIQUID BREAKERS - 01**  
0001010



0001010.000

**PRODUCTS RELATED**



0023860  
ELEVATOR BIKE STAND

■ 090

**LIQUID BREAKERS - 02**  
0001011



0001011.000



**LIQUID BREAKERS - 03**  
0000045



0000045.000

**PRODUCTS RELATED**



0023860  
ELEVATOR BIKE STAND

■ 090



**LIQUID BREAKERS - 04**  
0000030



0000030.000

**LIQUID BREAKERS - 05**  
0000648



0000648.000

X-BAR PAD  
0023450



0023450.313



0023450.315



0023450.319

FEATURES

Cover in highly resistant TPR  
Created in foam material to absorb the blow in case of an impact

Extremely lightweight  
Velcro fastening  
Permanent wash-proof graphics

PRODUCTS RELATED



0009846  
MX UNIKO VENTED  
HANDGUARDS

- |         |     |
|---------|-----|
| 011.016 | 030 |
| 040     | 090 |
| 110     | 111 |
| 112     | 325 |



**ACERBIS LOGO CROSS  
BAR PAD**  
0016279



0016279.090

**FOOT PEG COVER**  
0011469



0011469.010



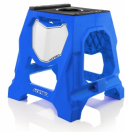
0011469.090



711 BIKE STAND  
0023453



0023453.010



0023453.040



0023453.060



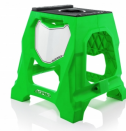
0023453.070



0023453.090



0023453.110



0023453.130

FEATURES

Structure composed of a techno polymer combined with two high-resistance steel tubes  
Upper mat with anti-slip design developed for the best stability, even in wet conditions  
Removable mount to stabilise the bike according to the form of the frame  
Central hole for the insert of 'Speedy Fuel' and '10L' tanks

Maximum static load: 160 kg - 352,74 Lbs  
The very wide feet and the knurled surface prevent any swaying, ensuring that the stand is very stable on sandy or muddy ground  
Integrated customisable number plate  
Easy handhold

ELEVATOR BIKE  
STAND  
0023860



0023860.090

FEATURES

Steel constructed Lift-Stand with an additional damper to slow the period of descent when lowering.  
Rubber upper deck with adjustable height to adapt to most full-size off-road dirt-bikes as well as youth/mini bikes.  
Rotating upper deck to allow movement of the bike during maintenance.

Locking mechanism to secure the stand and prevent accidental lowering of the bike.  
Maximum height of the bike: adjustable from 33 to 46 cm / 13" to 18".  
Minimum height of the bike: adjustable from 23,5 to 36 cm / 9 1/4" to 14" for minicross  
Maximum load: 130 Kg / 286lb.

PRODUCTS RELATED



000022  
FUNNEL TANK

- 010    □ 030
- 040    ■ 070
- 110    ■ 131



0000364  
SILENCER END CAP 16-39MM

- 090



0001010  
LIQUID BREAKERS - 01

**MOTO ACCESSORIES / RACE MATERIALS / ACCESSORIES**  
**ELEVATOR BIKE STAND**



0000045  
LIQUID BREAKERS - 03



0000033  
USA DUCT TAPE 9 MT  
■ 090

**END CAP DISPLAY**  
0011550



0011550.120

**FEATURES**

2/4 STROKES  
pcs: 36 pcs. set (18 yellow / 18 black)

**2/4 STROKE END CAP**  
0009601



0009601.090

**FEATURES**

2/4 STROKES

**HANDLEBAR END CAP**  
0012989



0012989.090

**FEATURES**

5 pcs





**REAR VIEW MIRROR -  
LEFT**  
0000541

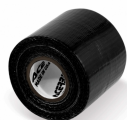


0000541.090

**REAR VIEW MIRROR -  
RIGHT**  
0000587



USA DUCT TAPE 9 MT  
0000033



0000033.090

FEATURES

Length: 10 mt  
Wide: 5 cm.

PRODUCTS RELATED



0023860  
ELEVATOR BIKE STAND

■ 090